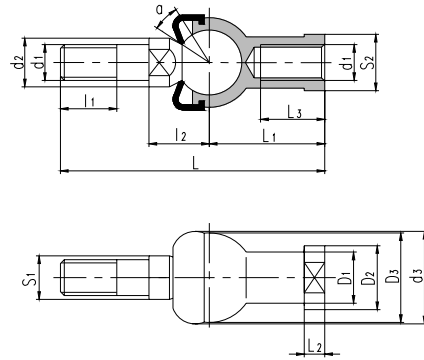




球头杆端关节轴承 Ball Joint Rod ends



滑动摩擦副：钢 / 锌基合金
Sliding contact surfaces: Steel / Zinc base alloy

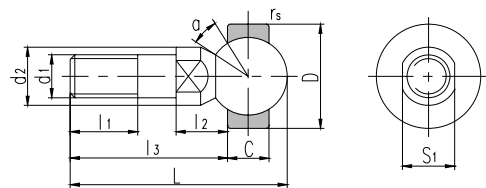


轴承型号 Bearing number	外形尺寸 Dimensions															额定静载荷 Static load ratings kN	重量 Weight ≈kg
	d ₁	d ₂	d ₃	l ₁	l ₂	S ₁	L	L ₁	L ₂	L ₃	D ₁	D ₂	D ₃	S ₂	α° ≈		
SQZ5-RS	M5	9	19	8	11	7	46	24	4	12	9	11	17	9	15	2.8	0.025
SQZ6-RS	M6	10	20	11	12.2	8	55.2	28	5	15	10	13	20	11	15	3.7	0.041
SQZ8-RS	M8	12	24	12	16	10	65	32	5	16	12.5	16	24	14	15	5.8	0.075
SQZ10-RS	M10×1.25	14	30	15	19.5	11	74.5	35	6.5	18	15	19	28	17	15	8.4	0.12
SQZ12-RS	M12×1.25	17	32	17	21	15	84	40	6.5	20	17.5	22	32	19	15	11	0.18
SQZ14-RS	M14×1.5	19	38	22	23.5	17	103	45	8	25	20	25	36	22	11	15	0.27
SQZ16-RS	M16×1.5	22	44	23	25.5	19	112	50	8	27	22	27	40	22	11	15	0.36
SQZ18-RS	M18×1.5	23	45	25	31	20	130.5	58	10	32	25	31	45	27	11	19	0.54
SQZ20-RS	M20×1.5	27	50	25	29	24	133	63	10	38	27.5	34	45	30	7.5	19	0.57
SQZ22-RS	M22×1.5	27	52	26	33	24	145	70	12	43	30	37	50	32	7.5	23	0.76

球头座杆螺纹也可左旋，若是左旋，轴承型号和螺纹标记需加“L”和“左”，例如：SQZL5-RS M5 左-6H。
The shank of ball joint housing may be left-hand thread, for left-hand thread, suffix “L” is added to bearing number and thread sign, e.g. SQZL5-RS M5L-6H.



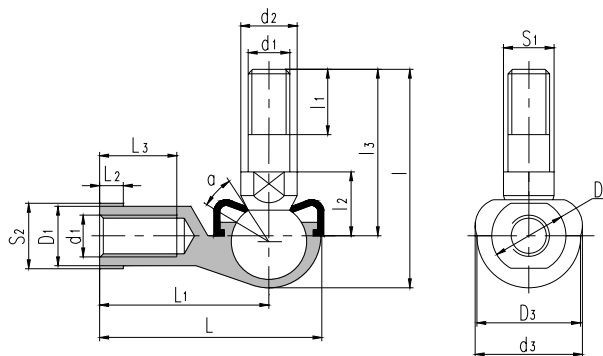
滑动摩擦副：钢 / 锌基合金
Sliding contact surfaces: Steel / Zinc base alloy



轴承型号 Bearing number	外形尺寸 Dimensions												额定静载荷 Static load ratings kN	重量 Weight ≈kg
	d ₁	d ₂	l ₁	l ₂	l ₃	L	S ₁	C	D	r _s min	α° ≈			
SQD5	M5	9	8	8	19	27.5	7	6	16	0.3	25	2	0.014	
SQD6	M6	10	11	8.8	23.8	33.5	8	6.75	18	0.3	25	3.2	0.021	
SQD8	M8	12	12	11.6	28.6	41	10	9	22	0.3	25	5.7	0.042	
SQD10	M10×1.25	14	15	14.2	34.2	49	11	10.5	26	0.3	25	9.2	0.067	
SQD12	M12×1.25	17	17	15.1	38.1	55.1	15	12	30	0.5	25	14	0.108	
SQD14	M14×1.5	19	22	16.8	51.3	70.7	17	13.5	34	0.5	20	19	0.167	
SQD16	M16×1.5	22	23	18	54.5	76.3	19	15	38	0.5	20	26	0.238	



球头杆端关节轴承 Ball Joint Rod ends



滑动摩擦副：钢 / 锌基合金

Sliding contact surfaces: Steel / Zinc base alloy

轴承 型号 Bearing number	外形尺寸 Dimensions																	额定静载荷 Static load ratings kN	重量 Weight ≈kg
	mm																		
	d ₁	d ₂	d ₃	l	l ₁	l ₂	l ₃	S ₁	L	L ₁	L ₂	L ₃	D ₁	D ₂	D ₃	S ₂	α° ≈		
SQ5-RS	M5	9	19	29	8	10	21	7	35	27	4	14	9	11	16	9	25	2.2	0.026
SQ6-RS	M6	10	20	35.5	11	11	26	8	40	30.5	5	14	10	13	19	11	25	3.5	0.039
SQ8-RS	M8	12	24	42.5	12	14	31	10	48	36.5	5	17	12.5	16	23	14	25	6.6	0.068
SQ10-RS	M10×1.25	14	30	50.5	15	17	37	11	57	43.5	6.5	21	15	19	27	17	25	10	0.112
SQ12-RS	M12×1.25	17	32	57.5	17	19	42	15	66	50.5	6.5	25	17.5	22	31	19	25	16	0.164
SQ14-RS	M14×1.5	19	38	73.5	22	21.5	56	17	75	57.5	8	26	20	25	35	22	25	19	0.254
SQ16-RS	M16×1.5	22	44	79.5	23	23.5	60	19	84	64.5	8	32	22	27	39	22	20	26	0.336
SQ18-RS	M18×1.5	23	45	90	25	26.5	68	20	93	71	10	34	25	31	44	27	20	33	0.464
SQ20-RS	M20×1.5	27	50	90	25	27	68	24	99	77	10	35	27.5	34	44	30	20	45	0.538
SQ22-RS	M22×1.5	27	52	95	26	28	70	24	109	84	12	41	30	37	50	32	16	48	0.713

球头座杆螺纹也可为左旋，若是左旋，轴承型号和螺纹标记需加“L”和“左”，例如：SQL5-RS M5左-6H。

The shank of ball joint housing may be left-hand thread, for left-hand thread, suffix “L” is added to bearing number and thread sign, e.g. SQL5-RS M5L-6H.

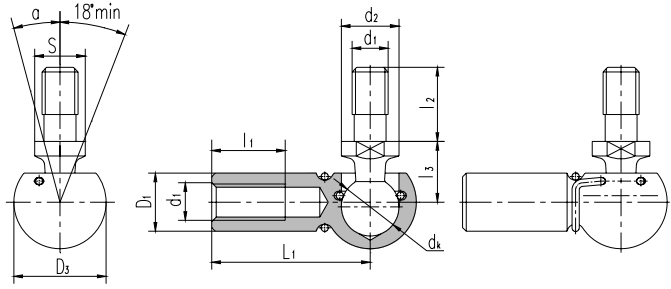
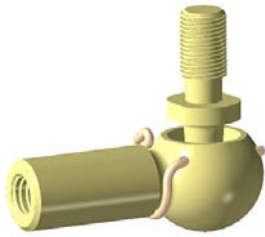
轴承 型号 Bearing number	外形尺寸 Dimensions																	额定静载荷 Static load ratings kN	重量 Weight ≈kg
	mm																		
	d ₁	d ₂	d ₃	l	l ₁	l ₂	l ₃	S ₁	L	L ₁	L ₂	L ₃	D ₁	D ₂	D ₃	S ₂	α° ≈		
SQY4-RS	10-32	9	19	29	8	10	21	7	35	27	4	14	9	11	16	9	25	2.2	0.026
SQY6-RS	1/4-28	10	20	35.5	11	11	26	8	40	30.5	5	14	10	13	19	11	25	3.5	0.039
SQY7-RS	5/16-24	12	24	42.5	12	14	31	10	48	36.5	5	17	12.5	16	23	14	25	6.6	0.068
SQY9-RS	3/8-24	14	30	50.5	15	17	37	11	57	43.5	6.5	21	15	19	27	17	25	10	0.112
SQY11-RS	7/16-20	17	32	57.5	17	19	42	15	66	50.5	6.5	25	17.5	22	31	19	25	16	0.164
SQY12-RS	1/2-20	19	38	73.5	22	21.5	56	17	75	57.5	8	26	20	25	35	22	25	19	0.254
SQY15-RS	5/8-18	22	44	79.5	23	23.5	60	19	84	64.5	8	32	22	27	39	22	20	26	0.336
SQY19-RS	3/4-16	23	45	90	25	26.5	68	20	93	71	10	34	25	31	44	27	20	33	0.464

球头座杆螺纹也可为左旋，若是左旋，轴承型号和螺纹标记需加“L”和“LH”，例如：SQYL4-RS 10-32UNF-2BLH。

The shank of ball joint housing may be left-hand thread, for left-hand thread, suffix “L” is added to bearing number and thread sign, e.g. SQYL4-RS 10-32UNF-2BLH.



球头杆端关节轴承 Ball Joint Rod ends



滑动摩擦副：钢 / 钢

Sliding contact surfaces: Steel / Steel

轴承 型号 Bearing number	外形尺寸 Dimensions											额定静载荷 Static load ratings kN	重量 Weight ≈kg
	d_1	d_2	d_k	l_1	l_2	l_3	S	L_1	D_1	D_3	α° ≈		
SQG5	M5	8	8	10.2	10.2	9	7	22	8	12.8	10	2.2	0.015
SQG6	M6	10	10	11.5	12.5	11	8	25	10	14.8	15	3.5	0.025
SQG8	M8	14	13	14	16.5	13	11	30	13	19.3	15	6.6	0.053
SQG10	M10	16	16	15.5	20	16	13	35	16	24	15	10	0.104
SQG12	M12	16	16	15.5	20	16	13	35	16	24	15	16	0.104
SQG14	M14×1.5	19	19	21.5	28	20	16	45	22	30	15	19	0.221
SQG14/B5	M14×2	19	19	21.5	28	20	16	45	22	30	15	26	0.221

球头座杆螺纹也可为左旋，若是左旋，轴承型号和螺纹标记需加“L”和“左”，例如：SQGL5 M5左-6H。
The shank of ball joint housing may be left-hand thread, for left-hand thread, suffix “L” is added to bearing number and thread sign, e.g. SQGL5 M5L-6H.