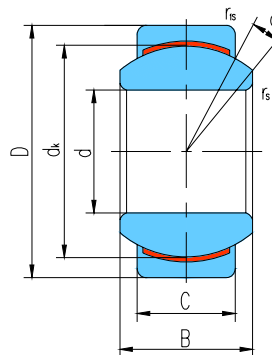




向心关节轴承 Radial Spherical Plain Bearings



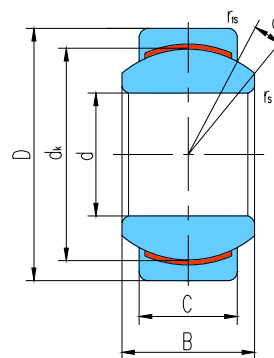
滑动摩擦副：钢 / PTFE 复合材料

Sliding contact surfaces: Steel / PTFE composite material

| 轴承型号 Bearing number | 外形尺寸 Dimensions mm | | | | | | | | 额定载荷 Load ratings kN | | 重量 Weight ≈kg |
|------------------------|-----------------------|----|----|----|------|-----------------------|------------------------|---------|-------------------------|---------------|------------------|
| | d | D | B | C | dk | r _s min | r _{1s} min | α° ≈ | 动载荷 Dynamic | 静载荷 Static | |
| GE4C | 4 | 12 | 5 | 3 | 8 | 0.3 | 0.3 | 16 | 2.1 | 5.4 | 0.003 |
| GE5C | 5 | 14 | 6 | 4 | 10 | 0.3 | 0.3 | 13 | 3.6 | 9.1 | 0.005 |
| GE6C | 6 | 14 | 6 | 4 | 10 | 0.3 | 0.3 | 13 | 3.6 | 9.1 | 0.004 |
| GE8C | 8 | 16 | 8 | 5 | 13 | 0.3 | 0.3 | 15 | 5.8 | 14 | 0.007 |
| GE10C | 10 | 19 | 9 | 6 | 16 | 0.3 | 0.3 | 12 | 8.6 | 21 | 0.011 |
| GE12C | 12 | 22 | 10 | 7 | 18 | 0.3 | 0.3 | 10 | 11 | 28 | 0.017 |
| GE15C | 15 | 26 | 12 | 9 | 22 | 0.3 | 0.3 | 8 | 18 | 45 | 0.026 |
| GE17C | 17 | 30 | 14 | 10 | 25 | 0.3 | 0.3 | 10 | 22 | 56 | 0.040 |
| GE20C | 20 | 35 | 16 | 12 | 29 | 0.3 | 0.3 | 9 | 31 | 78 | 0.064 |
| GE25C | 25 | 42 | 20 | 16 | 35.5 | 0.6 | 0.6 | 7 | 51 | 127 | 0.115 |
| GE30C | 30 | 47 | 22 | 18 | 40.7 | 0.6 | 0.6 | 6 | 65 | 166 | 0.149 |
| GE35C | 35 | 55 | 25 | 20 | 47 | 0.6 | 1 | 6 | 84 | 211 | 0.228 |
| GE40C | 40 | 62 | 28 | 22 | 53 | 0.6 | 1 | 7 | 104 | 262 | 0.318 |
| GE45C | 45 | 68 | 32 | 25 | 60 | 0.6 | 1 | 7 | 135 | 337 | 0.421 |
| GE50C | 50 | 75 | 35 | 28 | 66 | 0.6 | 1 | 6 | 166 | 415 | 0.562 |
| | | | | | | | | | | | |
| GEG4C | 4 | 14 | 7 | 4 | 10 | 0.3 | 0.3 | 20 | 3.6 | 9.1 | 0.005 |
| GEG5C | 5 | 16 | 9 | 5 | 13 | 0.3 | 0.3 | 21 | 5.8 | 14 | 0.008 |
| GEG6C | 6 | 16 | 9 | 5 | 13 | 0.3 | 0.3 | 21 | 5.8 | 14 | 0.006 |
| GEG8C | 8 | 19 | 11 | 6 | 16 | 0.3 | 0.3 | 21 | 8.6 | 21 | 0.014 |
| GEG10C | 10 | 22 | 12 | 7 | 18 | 0.3 | 0.3 | 18 | 11 | 28 | 0.021 |
| GEG12C | 12 | 26 | 15 | 9 | 22 | 0.3 | 0.3 | 18 | 18 | 45 | 0.033 |
| GEG15C | 15 | 30 | 16 | 10 | 25 | 0.3 | 0.3 | 16 | 22 | 56 | 0.049 |
| GEG17C | 17 | 35 | 20 | 12 | 29 | 0.3 | 0.3 | 19 | 31 | 78 | 0.083 |
| GEG20C | 20 | 42 | 25 | 16 | 35.5 | 0.3 | 0.3 | 17 | 51 | 127 | 0.153 |
| GEG25C | 25 | 47 | 28 | 18 | 40.7 | 0.6 | 0.6 | 17 | 65 | 166 | 0.203 |
| GEG30C | 30 | 55 | 32 | 20 | 47 | 0.6 | 0.6 | 17 | 84 | 211 | 0.304 |
| GEG35C | 35 | 62 | 35 | 22 | 53 | 0.6 | 1 | 16 | 104 | 262 | 0.408 |
| GEG40C | 40 | 68 | 40 | 25 | 60 | 0.6 | 1 | 17 | 135 | 337 | 0.542 |
| GEG45C | 45 | 75 | 43 | 28 | 66 | 0.6 | 1 | 15 | 166 | 415 | 0.713 |



向心关节轴承 Radial Spherical Plain Bearings



滑动摩擦副：钢 / PTFE 复合材料

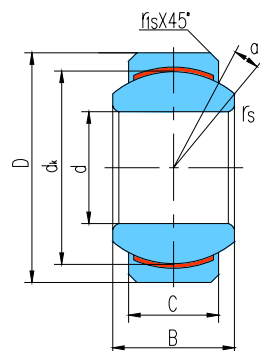
Sliding contact surfaces: Steel / PTFE composite material

| 轴承型号 Bearing number | 外形尺寸 Dimensions | | | | | | | | 额定载荷 Load ratings | | 重量 Weight ≈kg |
|------------------------|--------------------|----|----|------|--------|-----------|------------|---------|----------------------|---------------|---------------------|
| | d | D | B | C | dk | rs min | r1s min | α° ≈ | 动载荷 Dynamic | 静载荷 Static | |
| GEBJ5C | 5 | 13 | 8 | 6 | 11.112 | 0.3 | 0.3 | 13 | 6 | 15 | 0.006 |
| GEBJ6C | 6 | 16 | 9 | 6.75 | 12.7 | 0.3 | 0.3 | 13 | 7.7 | 19 | 0.010 |
| GEBJ8C | 8 | 19 | 12 | 9 | 15.88 | 0.3 | 0.3 | 13 | 13 | 32 | 0.018 |
| GEBJ10C | 10 | 22 | 14 | 10.5 | 19.05 | 0.3 | 0.6 | 13 | 18 | 45 | 0.027 |
| GEBJ12C | 12 | 26 | 16 | 12 | 22.23 | 0.3 | 0.6 | 13 | 24 | 60 | 0.043 |
| GEBJ14C | 14 | 28 | 19 | 13.5 | 25.4 | 0.3 | 0.6 | 15 | 31 | 77 | 0.055 |
| GEBJ16C | 16 | 32 | 21 | 15 | 28.58 | 0.3 | 0.6 | 15 | 38 | 96 | 0.081 |
| GEBJ18C | 18 | 35 | 23 | 16.5 | 31.75 | 0.6 | 0.6 | 15 | 47 | 117 | 0.103 |
| GEBJ20C | 20 | 40 | 25 | 18 | 34.93 | 0.6 | 0.6 | 15 | 56 | 141 | 0.149 |
| GEBJ22C | 22 | 42 | 28 | 20 | 38.1 | 0.6 | 0.6 | 15 | 68 | 171 | 0.176 |
| GEBJ25C | 25 | 47 | 31 | 22 | 42.86 | 0.6 | 0.6 | 15 | 84 | 212 | 0.242 |
| GEBJ30C | 30 | 55 | 37 | 25 | 50.8 | 0.6 | 0.6 | 15 | 113 | 283 | 0.378 |



向心关节轴承

Radial Spherical Plain Bearings



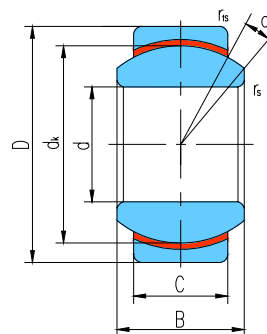
滑动摩擦副：钢 / PTFE 复合材料

Sliding contact surfaces: Steel / PTFE composite material

| 轴承 型号 Bearing number | 外形尺寸 Dimensions | | | | | | | | 额定载荷 Load ratings kN | | 重量 Weight ≈kg |
|-------------------------------|--------------------|--------|-------|-------|-------|-----------|------------|---------|-------------------------|---------------|---------------------|
| | d | D | B | C | dk | rs min | ris min | α° ≈ | 动载荷 Dynamic | 静载荷 Static | |
| GEFZ4C | 4.83 | 14.29 | 7.14 | 5.54 | 10.31 | 0.3 | 0.38 | 11 | 5.1 | 12.8 | 0.006 |
| | 0.19 | 0.5625 | 0.281 | 0.218 | 0.406 | 0.012 | 0.015 | | | | |
| GEFZ6C | 6.35 | 16.67 | 8.71 | 6.35 | 12.70 | 0.3 | 0.56 | 13.5 | 7.2 | 18.4 | 0.010 |
| | 0.25 | 0.6562 | 0.343 | 0.25 | 0.5 | 0.012 | 0.022 | | | | |
| GEFZ7C | 7.94 | 19.05 | 9.53 | 7.14 | 14.27 | 0.3 | 0.81 | 12 | 9.1 | 22.9 | 0.014 |
| | 0.3125 | 0.75 | 0.375 | 0.281 | 0.562 | 0.012 | 0.032 | | | | |
| GEFZ9C | 9.53 | 20.64 | 10.31 | 7.92 | 16.66 | 0.3 | 0.81 | 10 | 11.8 | 29.6 | 0.018 |
| | 0.375 | 0.8125 | 0.406 | 0.312 | 0.656 | 0.012 | 0.032 | | | | |
| GEFZ11C | 11.11 | 23.02 | 11.10 | 8.71 | 17.45 | 0.3 | 0.81 | 8 | 13.6 | 34.1 | 0.021 |
| | 0.4375 | 0.9062 | 0.437 | 0.343 | 0.687 | 0.012 | 0.032 | | | | |
| GEFZ12C | 12.70 | 25.40 | 12.70 | 9.91 | 20.65 | 0.3 | 0.81 | 9.5 | 18.4 | 46 | 0.029 |
| | 0.5 | 1 | 0.5 | 0.39 | 0.813 | 0.012 | 0.032 | | | | |
| GEFZ14C | 14.29 | 27.78 | 14.27 | 11.10 | 23.01 | 0.3 | 0.81 | 9.5 | 23 | 57.4 | 0.042 |
| | 0.5625 | 1.0937 | 0.562 | 0.437 | 0.906 | 0.012 | 0.032 | | | | |
| GEFZ15C | 15.88 | 30.16 | 15.88 | 12.70 | 25.40 | 0.3 | 0.81 | 9.5 | 29 | 72.5 | 0.053 |
| | 0.625 | 1.1875 | 0.625 | 0.5 | 1 | 0.012 | 0.032 | | | | |
| GEFZ19C | 19.05 | 36.51 | 19.05 | 15.06 | 30.15 | 0.3 | 1.12 | 9 | 40.8 | 102.1 | 0.094 |
| | 0.75 | 1.4375 | 0.75 | 0.593 | 1.187 | 0.012 | 0.044 | | | | |
| GEFZ22C | 22.23 | 39.69 | 22.23 | 17.86 | 33.32 | 0.6 | 1.12 | 9.5 | 53.5 | 133.8 | 0.119 |
| | 0.875 | 1.5625 | 0.875 | 0.703 | 1.312 | 0.024 | 0.044 | | | | |
| GEFZ25C | 25.40 | 44.45 | 25.40 | 20.24 | 38.10 | 0.6 | 1.12 | 10 | 69.4 | 173.5 | 0.173 |
| | 1 | 1.75 | 1 | 0.797 | 1.5 | 0.024 | 0.044 | | | | |



向心关节轴承 Radial Spherical Plain Bearings



滑动摩擦副：钢 / PTFE 塑料

Sliding contact surfaces: Stainless steel / PTFE plastic

| 轴承型号 Bearing number | 外形尺寸 Dimensions mm | | | | | | | | 额定载荷 Load ratings kN | | 重量 Weight ≈ kg |
|------------------------|-----------------------|----|----|----|----------------|-----------------------|------------------------|---------|-------------------------|---------------|----------------------|
| | d | D | B | C | d _k | r _s min | r _{1s} min | α° ≈ | 动载荷 Dynamic | 静载荷 Static | |
| GE10N | 10 | 19 | 9 | 6 | 16 | 0.3 | 0.3 | 12 | 5.7 | 8.6 | 0.011 |
| GE12N | 12 | 22 | 10 | 7 | 18 | 0.3 | 0.3 | 10 | 7.5 | 11 | 0.017 |
| GE15N | 15 | 26 | 12 | 9 | 22 | 0.3 | 0.3 | 8 | 11 | 17 | 0.026 |
| GE17N | 17 | 30 | 14 | 10 | 25 | 0.3 | 0.3 | 10 | 15 | 22 | 0.040 |
| GE20N | 20 | 35 | 16 | 12 | 29 | 0.3 | 0.3 | 9 | 20 | 31 | 0.064 |
| GE25N | 25 | 42 | 20 | 16 | 35.5 | 0.6 | 0.6 | 7 | 34 | 51 | 0.115 |
| GE30N | 30 | 47 | 22 | 18 | 40.7 | 0.6 | 0.6 | 6 | 43 | 65 | 0.149 |
| GE35N | 35 | 55 | 25 | 20 | 47 | 0.6 | 1 | 6 | 56 | 84 | 0.228 |
| GE40N | 40 | 62 | 28 | 22 | 53 | 0.6 | 1 | 7 | 69 | 104 | 0.318 |
| GE45N | 45 | 68 | 32 | 25 | 60 | 0.6 | 1 | 7 | 90 | 135 | 0.421 |
| GE50N | 50 | 75 | 35 | 28 | 66 | 0.6 | 1 | 6 | 110 | 166 | 0.562 |
| GE60N | 60 | 90 | 44 | 36 | 80 | 1 | 1 | 6 | 172 | 259 | 1.03 |
| | | | | | | | | | | | |
| GEG8N | 8 | 19 | 11 | 6 | 16 | 0.3 | 0.3 | 21 | 5.7 | 8.6 | 0.014 |
| GEG10N | 10 | 22 | 12 | 7 | 18 | 0.3 | 0.3 | 18 | 7.5 | 11 | 0.021 |
| GEG12N | 12 | 26 | 15 | 9 | 22 | 0.3 | 0.3 | 18 | 11 | 17 | 0.033 |
| GEG15N | 15 | 30 | 16 | 10 | 25 | 0.3 | 0.3 | 16 | 15 | 22 | 0.049 |
| GEG17N | 17 | 35 | 20 | 12 | 29 | 0.3 | 0.3 | 19 | 20 | 31 | 0.083 |
| GEG20N | 20 | 42 | 25 | 16 | 35.5 | 0.3 | 0.6 | 17 | 34 | 51 | 0.153 |
| GEG25N | 25 | 47 | 28 | 18 | 40.7 | 0.6 | 0.6 | 17 | 43 | 65 | 0.203 |
| GEG30N | 30 | 55 | 32 | 20 | 47 | 0.6 | 1 | 17 | 56 | 84 | 0.304 |
| GEG35N | 35 | 62 | 35 | 22 | 53 | 0.6 | 1 | 16 | 69 | 104 | 0.408 |
| GEG40N | 40 | 68 | 40 | 25 | 60 | 0.6 | 1 | 17 | 90 | 135 | 0.542 |
| GEG45N | 45 | 75 | 43 | 28 | 66 | 0.6 | 1 | 15 | 110 | 166 | 0.713 |
| GEG50N | 50 | 90 | 56 | 36 | 80 | 0.6 | 1 | 17 | 172 | 259 | 1.14 |

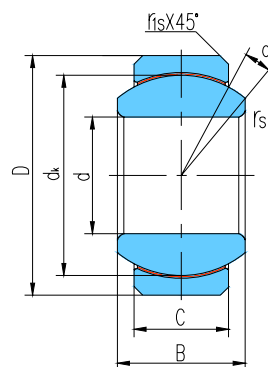


向心关节轴承

Radial Spherical Plain Bearings



滑动摩擦副：钢 / PTFE 编织物
Sliding contact surfaces: Steel / PTFE fabric



| 轴承型号 Bearing number | 外形尺寸 Dimensions | | | | | | | | 额定载荷 Load ratings kN | | 重量 Weight ≈ kg |
|------------------------|--------------------|--------|-------|-------|-------|-----------|------------|---------|-------------------------|---------------|----------------------|
| | d | D | B | C | dk | rs min | r1s min | α° ≈ | 动载荷 Dynamic | 静载荷 Static | |
| GEFZ4T | 4.83 | 14.29 | 7.14 | 5.54 | 10.31 | 0.3 | 0.38 | 11 | 7.4 | 11 | 0.006 |
| | 0.19 | 0.5625 | 0.281 | 0.218 | 0.406 | 0.012 | 0.015 | | | | |
| GEFZ6T | 6.35 | 16.67 | 8.71 | 6.35 | 12.70 | 0.3 | 0.56 | 13.5 | 10 | 15 | 0.010 |
| | 0.25 | 0.6562 | 0.343 | 0.25 | 0.5 | 0.012 | 0.022 | | | | |
| GEFZ7T | 7.94 | 19.05 | 9.53 | 7.14 | 14.27 | 0.3 | 0.81 | 12 | 13 | 19 | 0.014 |
| | 0.3125 | 0.75 | 0.375 | 0.281 | 0.562 | 0.012 | 0.032 | | | | |
| GEFZ9T | 9.53 | 20.64 | 10.31 | 7.92 | 16.66 | 0.3 | 0.81 | 10 | 17 | 25 | 0.018 |
| | 0.375 | 0.8125 | 0.406 | 0.312 | 0.656 | 0.012 | 0.032 | | | | |
| GEFZ11T | 11.11 | 23.02 | 11.10 | 8.71 | 17.45 | 0.3 | 0.81 | 8 | 19 | 28 | 0.021 |
| | 0.4375 | 0.9062 | 0.437 | 0.343 | 0.687 | 0.012 | 0.032 | | | | |
| GEFZ12T | 12.70 | 25.40 | 12.70 | 9.91 | 20.65 | 0.3 | 0.81 | 9.5 | 26 | 39 | 0.029 |
| | 0.5 | 1 | 0.5 | 0.39 | 0.813 | 0.012 | 0.032 | | | | |
| GEFZ14T | 14.29 | 27.78 | 14.27 | 11.10 | 23.01 | 0.3 | 0.81 | 9.5 | 33 | 49 | 0.042 |
| | 0.5625 | 1.0937 | 0.562 | 0.437 | 0.906 | 0.012 | 0.032 | | | | |
| GEFZ15T | 15.88 | 30.16 | 15.88 | 12.70 | 25.40 | 0.3 | 0.81 | 9.5 | 41 | 61 | 0.053 |
| | 0.625 | 1.1875 | 0.625 | 0.5 | 1 | 0.012 | 0.032 | | | | |
| GEFZ19T | 19.05 | 36.51 | 19.05 | 15.06 | 30.15 | 0.3 | 1.12 | 9 | 59 | 88 | 0.094 |
| | 0.75 | 1.4375 | 0.75 | 0.593 | 1.187 | 0.012 | 0.044 | | | | |
| GEFZ22T | 22.23 | 39.69 | 22.23 | 17.86 | 33.32 | 0.6 | 1.12 | 9.5 | 89 | 133 | 0.119 |
| | 0.875 | 1.5625 | 0.875 | 0.703 | 1.312 | 0.024 | 0.044 | | | | |
| GEFZ25T | 25.40 | 44.45 | 25.40 | 20.24 | 38.10 | 0.6 | 1.12 | 10 | 115 | 172 | 0.173 |
| | 1 | 1.75 | 1 | 0.797 | 1.5 | 0.024 | 0.044 | | | | |

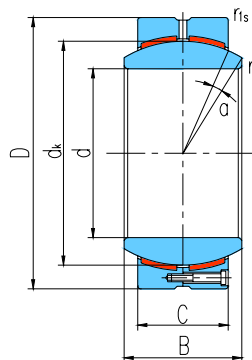


向心关节轴承 Radial Spherical Plain Bearings

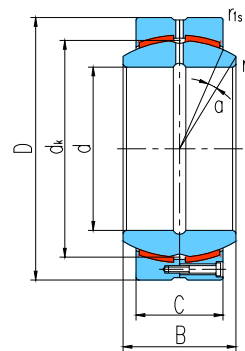


滑动摩擦副：钢 / PTFE 复合材料

Sliding contact surfaces: Steel / PTFE composite material



GEH...HC



GEH...HCS

| 轴承型号 Bearing number | | 外形尺寸 Dimensions | | | | | | | | 额定载荷 Load ratings | | 重量 Weight ≈kg |
|------------------------|-----------|--------------------|-----|-----|-----|-----|-----------------------|------------------------|---------|----------------------|---------------|---------------------|
| | | mm | | | | | | | | kN | | |
| | | d | D | B | C | dk | r _s min | r _{1s} min | α° ≈ | 动载荷 Dynamic | 静载荷 Static | |
| GEH100HC | GEH100HCS | 100 | 150 | 71 | 67 | 135 | 1 | 1 | 2 | 900 | 1800 | 5.07 |
| GEH110HC | GEH110HCS | 110 | 160 | 78 | 74 | 145 | 1 | 1 | 2 | 1070 | 2140 | 6.21 |
| GEH120HC | GEH120HCS | 120 | 180 | 85 | 80 | 160 | 1 | 1 | 2 | 1280 | 2560 | 8.87 |
| GEH140HC | GEH140HCS | 140 | 210 | 100 | 95 | 185 | 1 | 1 | 2 | 1750 | 3500 | 14.6 |
| GEH160HC | GEH160HCS | 160 | 230 | 115 | 109 | 210 | 1 | 1 | 2 | 2280 | 4560 | 18.6 |
| GEH180HC | GEH180HCS | 180 | 260 | 128 | 122 | 240 | 1.1 | 1.1 | 2 | 2920 | 5840 | 26.7 |
| GEH200HC | GEH200HCS | 200 | 290 | 140 | 134 | 260 | 1.1 | 1.1 | 2 | 3480 | 6960 | 37.1 |
| GEH220HC | GEH220HCS | 220 | 320 | 155 | 148 | 290 | 1.1 | 1.1 | 2 | 4290 | 8580 | 49.4 |
| GEH240HC | GEH240HCS | 240 | 340 | 170 | 162 | 310 | 1.1 | 1.1 | 2 | 5020 | 10040 | 57.9 |
| GEH260HC | GEH260HCS | 260 | 370 | 185 | 175 | 340 | 1.1 | 1.1 | 2 | 5950 | 11900 | 75.2 |
| GEH280HC | GEH280HCS | 280 | 400 | 200 | 190 | 370 | 1.1 | 1.1 | 2 | 7030 | 14060 | 96 |
| GEH300HC | GEH300HCS | 300 | 430 | 212 | 200 | 390 | 1.1 | 1.1 | 2 | 7800 | 15600 | 117 |
| GEH320HC | GEH320HCS | 320 | 460 | 230 | 218 | 414 | 1.1 | 3 | 2 | 9020 | 18040 | 148 |
| GEH340HC | GEH340HCS | 340 | 480 | 243 | 230 | 434 | 1.1 | 3 | 2 | 9980 | 19960 | 163 |
| GEH360HC | GEH360HCS | 360 | 520 | 258 | 243 | 474 | 1.1 | 4 | 2 | 11510 | 23020 | 213 |
| GEH380HC | GEH380HCS | 380 | 540 | 272 | 258 | 494 | 1.5 | 4 | 2 | 12740 | 25480 | 236 |
| GEH400HC | GEH400HCS | 400 | 580 | 280 | 265 | 514 | 1.5 | 4 | 2 | 13620 | 27240 | 290 |
| GEH420HC | GEH420HCS | 420 | 600 | 300 | 280 | 534 | 1.5 | 4 | 2 | 14950 | 29900 | 319 |
| GEH440HC | GEH440HCS | 440 | 630 | 315 | 300 | 574 | 1.5 | 4 | 2 | 17220 | 34440 | 379 |
| GEH460HC | GEH460HCS | 460 | 650 | 325 | 308 | 593 | 1.5 | 4 | 2 | 18260 | 36520 | 404 |
| GEH480HC | GEH480HCS | 480 | 680 | 340 | 320 | 623 | 2 | 5 | 2 | 19930 | 39860 | 463 |
| GEH500HC | GEH500HCS | 500 | 710 | 355 | 335 | 643 | 2 | 5 | 2 | 21540 | 43080 | 529 |
| GEH530HC | GEH530HCS | 530 | 750 | 375 | 355 | 673 | 2 | 5 | 2 | 23890 | 47780 | 620 |
| GEH560HC | GEH560HCS | 560 | 800 | 400 | 380 | 723 | 2 | 5 | 2 | 27470 | 54940 | 770 |
| GEH600HC | GEH600HCS | 600 | 850 | 425 | 400 | 773 | 2 | 6 | 2 | 30920 | 61840 | 903 |
| GEH630HC | GEH630HCS | 630 | 900 | 450 | 425 | 813 | 3 | 6 | 2 | 34550 | 69100 | 1092 |

可提供滑动摩擦副为钢 / 双金属或钢 / 聚甲醛的向心关节轴承。Can supply other spherical bearings with Sliding contact surfaces Steel / Double metal or Steel / Polyformaldehyde.

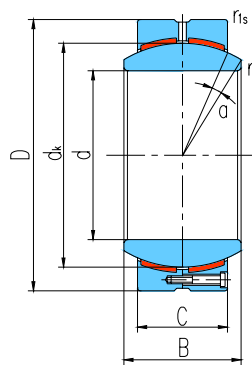


向心关节轴承 Radial Spherical Plain Bearings

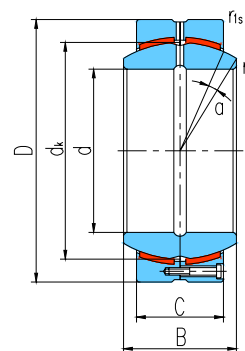


滑动摩擦副：钢 / PTFE 复合材料

Sliding contact surfaces: Steel / PTFE composite material



GEC...HC



GEC...HCS

| 轴承型号 Bearing number | | 外形尺寸 Dimensions | | | | | | | 额定载荷 Load ratings | | 重量 Weight ≈kg | |
|------------------------|-----------|--------------------|-----|-----|-----|-----|-----------|------------|----------------------|----------------|---------------------|-----|
| | | mm | | | | | | | kN | | | |
| | | d | D | B | C | dk | rs min | r1s min | α° ≈ | 动载荷 Dynamic | 静载荷 Static | |
| GEC320HC | GEC320HCS | 320 | 440 | 160 | 135 | 380 | 1.1 | 3 | 4 | 5130 | 10260 | 78 |
| GEC340HC | GEC340HCS | 340 | 460 | 160 | 135 | 400 | 1.1 | 3 | 3 | 5400 | 10800 | 83 |
| GEC360HC | GEC360HCS | 360 | 480 | 160 | 135 | 420 | 1.1 | 3 | 3 | 5670 | 11340 | 87 |
| GEC380HC | GEC380HCS | 380 | 520 | 190 | 160 | 450 | 1.5 | 4 | 4 | 7200 | 14400 | 129 |
| GEC400HC | GEC400HCS | 400 | 540 | 190 | 160 | 470 | 1.5 | 4 | 3 | 7520 | 15040 | 135 |
| GEC420HC | GEC420HCS | 420 | 560 | 190 | 160 | 490 | 1.5 | 4 | 3 | 7840 | 15680 | 141 |
| GEC440HC | GEC440HCS | 440 | 600 | 218 | 185 | 520 | 1.5 | 4 | 3 | 9620 | 19240 | 196 |
| GEC460HC | GEC460HCS | 460 | 620 | 218 | 185 | 540 | 1.5 | 4 | 3 | 9990 | 19980 | 204 |
| GEC480HC | GEC480HCS | 480 | 650 | 230 | 195 | 565 | 2 | 5 | 3 | 11000 | 22000 | 239 |
| GEC500HC | GEC500HCS | 500 | 670 | 230 | 195 | 585 | 2 | 5 | 3 | 11400 | 22800 | 248 |
| GEC530HC | GEC530HCS | 530 | 710 | 243 | 205 | 620 | 2 | 5 | 3 | 12710 | 25420 | 294 |
| GEC560HC | GEC560HCS | 560 | 750 | 258 | 215 | 655 | 2 | 5 | 4 | 14080 | 28160 | 345 |
| GEC600HC | GEC600HCS | 600 | 800 | 272 | 230 | 700 | 2 | 5 | 3 | 16100 | 32200 | 413 |

可提供滑动摩擦副为钢 / 双金属或钢 / 聚甲醛的向心关节轴承。Can supply other spherical bearings with Sliding contact surfaces Steel / Double metal or Steel / Polyformaldehyde.

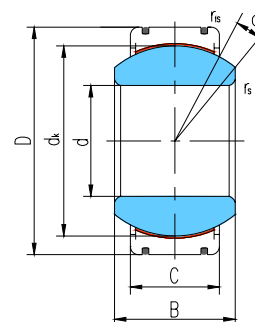
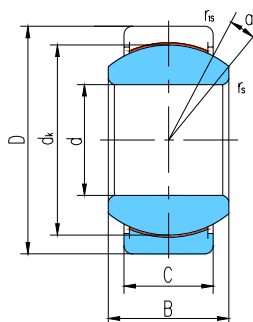


向心关节轴承 Radial Spherical Plain Bearings



滑动摩擦副: 钢 / PTFE 编织物

Sliding contact surfaces: Steel / PTFE fabric



GE...ET-2RS

GE...XT-2RS

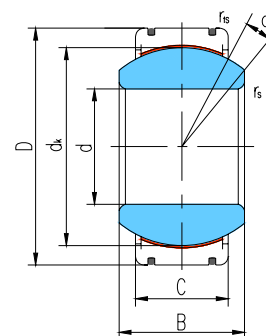
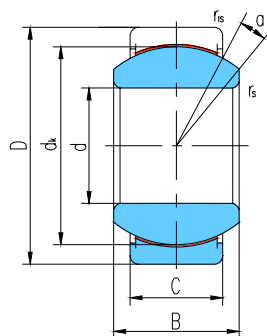
| 轴承 型号 Bearing number | 外形尺寸 Dimensions | | | | | | | | 额定载荷 Load ratings | | 重量 Weight ≈kg |
|-------------------------------|--------------------|-----|-----|-----|------|-----------|------------|---------|----------------------|---------------|---------------------|
| | mm | | | | | | | | kN | | |
| | d | D | B | C | dk | rs min | r1s min | α° ≈ | 动载荷 Dynamic | 静载荷 Static | |
| GE15ET-2RS | 15 | 26 | 12 | 9 | 22 | 0.3 | 0.3 | 8 | 25 | 59 | 0.026 |
| GE17ET-2RS | 17 | 30 | 14 | 10 | 25 | 0.3 | 0.3 | 10 | 32 | 75 | 0.040 |
| GE20ET-2RS | 20 | 35 | 16 | 12 | 29 | 0.3 | 0.3 | 9 | 45 | 104 | 0.064 |
| GE25ET-2RS | 25 | 42 | 20 | 16 | 35.5 | 0.6 | 0.6 | 7 | 85 | 204 | 0.115 |
| GE30ET-2RS | 30 | 47 | 22 | 18 | 40.7 | 0.6 | 0.6 | 6 | 110 | 263 | 0.149 |
| GE35ET-2RS | 35 | 55 | 25 | 20 | 47 | 0.6 | 1 | 6 | 140 | 338 | 0.228 |
| GE40ET-2RS | 40 | 62 | 28 | 22 | 53 | 0.6 | 1 | 7 | 175 | 419 | 0.318 |
| GE45ET-2RS | 45 | 68 | 32 | 25 | 60 | 0.6 | 1 | 7 | 225 | 540 | 0.421 |
| GE50ET-2RS | 50 | 75 | 35 | 28 | 66 | 0.6 | 1 | 6 | 275 | 665 | 0.562 |
| GE55ET-2RS | 55 | 85 | 40 | 32 | 74 | 0.6 | 1 | 7 | 355 | 852 | 0.864 |
| GE60ET-2RS | 60 | 90 | 44 | 36 | 80 | 1 | 1 | 6 | 430 | 1030 | 1.03 |
| GE70ET-2RS | 70 | 105 | 49 | 40 | 92 | 1 | 1 | 6 | 550 | 1320 | 1.57 |
| GE80ET-2RS | 80 | 120 | 55 | 45 | 105 | 1 | 1 | 6 | 705 | 1700 | 2.32 |
| GE90ET-2RS | 90 | 130 | 60 | 50 | 115 | 1 | 1 | 5 | 860 | 2070 | 2.79 |
| GE100ET-2RS | 100 | 150 | 70 | 55 | 130 | 1 | 1 | 7 | 1070 | 2570 | 4.44 |
| GE110ET-2RS | 110 | 160 | 70 | 55 | 140 | 1 | 1 | 6 | 1150 | 2770 | 4.83 |
| GE120ET-2RS | 120 | 180 | 85 | 70 | 160 | 1 | 1 | 6 | 1680 | 4030 | 8.11 |
| GE140XT-2RS | 140 | 210 | 90 | 70 | 180 | 1 | 1 | 7 | 1890 | 4530 | 11.2 |
| GE160XT-2RS | 160 | 230 | 105 | 80 | 200 | 1 | 1 | 8 | 2400 | 5760 | 14.1 |
| GE180XT-2RS | 180 | 260 | 105 | 80 | 225 | 1.1 | 1.1 | 6 | 2700 | 6480 | 18.5 |
| GE200XT-2RS | 200 | 290 | 130 | 100 | 250 | 1.1 | 1.1 | 7 | 3750 | 9000 | 28.4 |
| GE220XT-2RS | 220 | 320 | 135 | 100 | 275 | 1.1 | 1.1 | 8 | 4120 | 9900 | 35.7 |
| GE240XT-2RS | 240 | 340 | 140 | 100 | 300 | 1.1 | 1.1 | 8 | 4500 | 10800 | 39.7 |
| GE260XT-2RS | 260 | 370 | 150 | 110 | 325 | 1.1 | 1.1 | 7 | 5360 | 12870 | 51.5 |
| GE280XT-2RS | 280 | 400 | 155 | 120 | 350 | 1.1 | 1.1 | 6 | 6300 | 15120 | 64.9 |
| GE300XT-2RS | 300 | 430 | 165 | 120 | 375 | 1.1 | 1.1 | 7 | 6750 | 16200 | 77.6 |



向心关节轴承 Radial Spherical Plain Bearings



滑动摩擦副：钢 / PTFE 编织物
Sliding contact surfaces: Steel / PTFE fabric



GEG...ET-2RS

GEG...XT-2RS

| 轴承 型号 Bearing number | 外形尺寸 Dimensions | | | | | | | | 额定载荷 Load ratings | | 重量 Weight ≈kg |
|-------------------------------|--------------------|-----|-----|-----|------|-----------|------------|---------|----------------------|---------------|---------------------|
| | mm | | | | | | | | kN | | |
| | d | D | B | C | dk | rs min | ris min | α° ≈ | 动载荷 Dynamic | 静载荷 Static | |
| GEG15ET-2RS | 15 | 30 | 16 | 10 | 25 | 0.3 | 0.3 | 16 | 32 | 75 | 0.048 |
| GEG17ET-2RS | 17 | 35 | 20 | 12 | 29 | 0.3 | 0.3 | 19 | 45 | 104 | 0.080 |
| GEG20ET-2RS | 20 | 42 | 25 | 16 | 35.5 | 0.3 | 0.6 | 17 | 85 | 204 | 0.152 |
| GEG25ET-2RS | 25 | 47 | 28 | 18 | 40.7 | 0.6 | 0.6 | 17 | 110 | 263 | 0.199 |
| GEG30ET-2RS | 30 | 55 | 32 | 20 | 47 | 0.6 | 1 | 17 | 140 | 338 | 0.296 |
| GEG35ET-2RS | 35 | 62 | 35 | 22 | 53 | 0.6 | 1 | 16 | 175 | 419 | 0.402 |
| GEG40ET-2RS | 40 | 68 | 40 | 25 | 60 | 0.6 | 1 | 17 | 225 | 540 | 0.535 |
| GEG45ET-2RS | 45 | 75 | 43 | 28 | 66 | 0.6 | 1 | 15 | 275 | 665 | 0.698 |
| GEG50ET-2RS | 50 | 90 | 56 | 36 | 80 | 0.6 | 1 | 17 | 430 | 1030 | 1.42 |
| GEG60ET-2RS | 60 | 105 | 63 | 40 | 92 | 1 | 1 | 17 | 550 | 1320 | 2.09 |
| GEG70ET-2RS | 70 | 120 | 70 | 45 | 105 | 1 | 1 | 16 | 705 | 1700 | 3.01 |
| GEG80ET-2RS | 80 | 130 | 75 | 50 | 115 | 1 | 1 | 14 | 860 | 2070 | 3.61 |
| GEG90ET-2RS | 90 | 150 | 85 | 55 | 130 | 1 | 1 | 15 | 1070 | 2570 | 5.50 |
| GEG100ET-2RS | 100 | 160 | 85 | 55 | 140 | 1 | 1 | 14 | 1150 | 2770 | 6.04 |
| GEG110ET-2RS | 110 | 180 | 100 | 70 | 160 | 1 | 1 | 12 | 1680 | 4030 | 9.74 |
| GEG120XT-2RS | 120 | 210 | 115 | 70 | 180 | 1 | 1 | 16 | 1890 | 4530 | 15.1 |
| GEG140XT-2RS | 140 | 230 | 130 | 80 | 200 | 1 | 1 | 16 | 2400 | 5760 | 18.9 |
| GEG160XT-2RS | 160 | 260 | 135 | 80 | 225 | 1.1 | 1.1 | 16 | 2700 | 6480 | 24.8 |
| GEG180XT-2RS | 180 | 290 | 155 | 100 | 250 | 1.1 | 1.1 | 14 | 3750 | 9000 | 35.9 |
| GEG200XT-2RS | 200 | 320 | 165 | 100 | 275 | 1.1 | 1.1 | 15 | 4120 | 9900 | 44.9 |
| GEG220XT-2RS | 220 | 340 | 175 | 100 | 300 | 1.1 | 1.1 | 16 | 4500 | 10800 | 50.9 |
| GEG240XT-2RS | 240 | 370 | 190 | 110 | 325 | 1.1 | 1.1 | 15 | 5360 | 12870 | 65.3 |
| GEG260XT-2RS | 260 | 400 | 205 | 120 | 350 | 1.1 | 1.1 | 15 | 6300 | 15120 | 82.0 |
| GEG280XT-2RS | 280 | 430 | 210 | 120 | 375 | 1.1 | 1.1 | 15 | 6750 | 16200 | 96.6 |

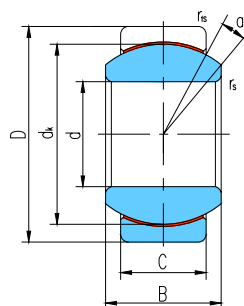


向心关节轴承 Radial Spherical Plain Bearings

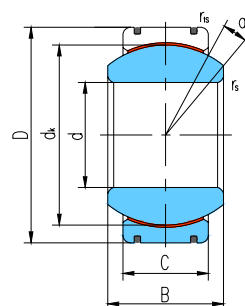


滑动摩擦副: 不锈钢 / PTFE 编织物

Sliding contact surfaces: Stainless steel / PTFE fabric



GE...ET/X



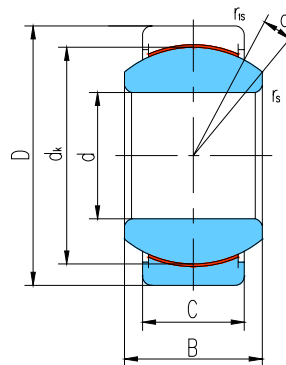
GE...XT/X

| 轴承 型号 Bearing number | 外形尺寸 Dimensions | | | | | | | | 额定载荷 Load ratings | | 重量 Weight ≈kg |
|-------------------------------|--------------------|-----|-----|-----|------|-----------------------|------------------------|---------|----------------------|---------------|---------------------|
| | d | D | B | C | dk | r _s min | r _{1s} min | α° ≈ | 动载荷 Dynamic | 静载荷 Static | |
| GE15ET/X | 15 | 26 | 12 | 9 | 22 | 0.3 | 0.3 | 8 | 25 | 59 | 0.026 |
| GE17ET/X | 17 | 30 | 14 | 10 | 25 | 0.3 | 0.3 | 10 | 32 | 75 | 0.040 |
| GE20ET/X | 20 | 35 | 16 | 12 | 29 | 0.3 | 0.3 | 9 | 45 | 104 | 0.064 |
| GE25ET/X | 25 | 42 | 20 | 16 | 35.5 | 0.6 | 0.6 | 7 | 85 | 204 | 0.115 |
| GE30ET/X | 30 | 47 | 22 | 18 | 40.7 | 0.6 | 0.6 | 6 | 110 | 263 | 0.149 |
| GE35ET/X | 35 | 55 | 25 | 20 | 47 | 0.6 | 1 | 6 | 140 | 338 | 0.228 |
| GE40ET/X | 40 | 62 | 28 | 22 | 53 | 0.6 | 1 | 7 | 175 | 419 | 0.318 |
| GE45ET/X | 45 | 68 | 32 | 25 | 60 | 0.6 | 1 | 7 | 225 | 540 | 0.421 |
| GE50ET/X | 50 | 75 | 35 | 28 | 66 | 0.6 | 1 | 6 | 275 | 665 | 0.562 |
| GE55ET/X | 55 | 85 | 40 | 32 | 74 | 0.6 | 1 | 7 | 355 | 852 | 0.864 |
| GE60ET/X | 60 | 90 | 44 | 36 | 80 | 1 | 1 | 6 | 430 | 1030 | 1.03 |
| GE70XT/X | 70 | 105 | 49 | 40 | 92 | 1 | 1 | 6 | 550 | 1320 | 1.57 |
| GE80XT/X | 80 | 120 | 55 | 45 | 105 | 1 | 1 | 6 | 705 | 1700 | 2.32 |
| GE90XT/X | 90 | 130 | 60 | 50 | 115 | 1 | 1 | 5 | 860 | 2070 | 2.79 |
| GE100XT/X | 100 | 150 | 70 | 55 | 130 | 1 | 1 | 7 | 1070 | 2570 | 4.44 |
| GE110XT/X | 110 | 160 | 70 | 55 | 140 | 1 | 1 | 6 | 1150 | 2770 | 4.83 |
| GE120XT/X | 120 | 180 | 85 | 70 | 160 | 1 | 1 | 6 | 1680 | 4030 | 8.11 |
| GE140XT/X | 140 | 210 | 90 | 70 | 180 | 1 | 1 | 7 | 1890 | 4530 | 11.2 |
| GE160XT/X | 160 | 230 | 105 | 80 | 200 | 1 | 1 | 8 | 2400 | 5760 | 14.1 |
| GE180XT/X | 180 | 260 | 105 | 80 | 225 | 1.1 | 1.1 | 6 | 2700 | 6480 | 18.5 |
| GE200XT/X | 200 | 290 | 130 | 100 | 250 | 1.1 | 1.1 | 7 | 3750 | 9000 | 28.4 |
| GE220XT/X | 220 | 320 | 135 | 100 | 275 | 1.1 | 1.1 | 8 | 4120 | 9900 | 35.7 |
| GE240XT/X | 240 | 340 | 140 | 100 | 300 | 1.1 | 1.1 | 8 | 4500 | 10800 | 39.7 |
| GE260XT/X | 260 | 370 | 150 | 110 | 325 | 1.1 | 1.1 | 7 | 5360 | 12870 | 51.5 |
| GE280XT/X | 280 | 400 | 155 | 120 | 350 | 1.1 | 1.1 | 6 | 6300 | 15120 | 64.9 |
| GE300XT/X | 300 | 430 | 165 | 120 | 375 | 1.1 | 1.1 | 7 | 6750 | 16200 | 77.6 |

可提供带密封圈的向心关节轴承。 Can supply spherical plain bearing with two seals.



向心关节轴承 Radial Spherical Plain Bearings



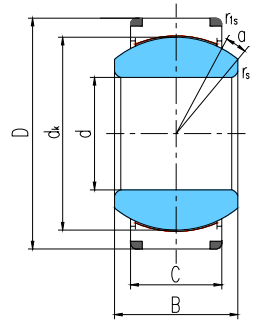
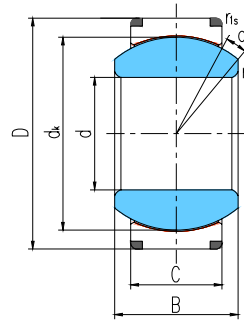
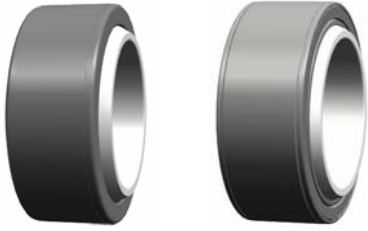
滑动摩擦副：钢 / PTFE 编织物

Sliding contact surfaces: Steel / PTFE fabric

| 轴承 型号 Bearing number | 外形尺寸 Dimensions | | | | | | | | 额定载荷 Load ratings | | 重量 Weight ≈kg |
|-------------------------------|--------------------|---------|---------|---------|-------|-----------------------|------------------------|---------|----------------------|---------------|---------------------|
| | mm/inch | | | | | | | | 动载荷 Dynamic | 静载荷 Static | |
| | d | D | B | C | dk | r _s min | r _{is} min | α° ≈ | | | |
| GEZ19ET-2RS | 19.05 | 31.75 | 16.662 | 14.275 | 27.5 | 0.3 | 0.6 | 6 | 50 | 117 | 0.053 |
| | 0.75 | 1.25 | 0.656 | 0.562 | 1.081 | 0.012 | 0.024 | | | | |
| GEZ22ET-2RS | 22.225 | 36.513 | 19.431 | 16.662 | 32 | 0.3 | 0.6 | 6 | 69 | 160 | 0.085 |
| | 0.875 | 1.4375 | 0.756 | 0.656 | 1.258 | 0.012 | 0.024 | | | | |
| GEZ25ET-2RS | 25.4 | 41.275 | 22.225 | 19.05 | 36.5 | 0.3 | 0.6 | 6 | 104 | 250 | 0.121 |
| | 1 | 1.625 | 0.875 | 0.75 | 1.437 | 0.012 | 0.024 | | | | |
| GEZ31ET-2RS | 31.75 | 50.8 | 27.762 | 23.8 | 45.5 | 0.6 | 0.6 | 6 | 160 | 390 | 0.23 |
| | 1.25 | 2 | 1.093 | 0.937 | 1.788 | 0.024 | 0.024 | | | | |
| GEZ34ET-2RS | 34.925 | 55.563 | 30.15 | 26.187 | 49 | 0.6 | 1 | 5 | 190 | 460 | 0.35 |
| | 1.375 | 2.1875 | 1.187 | 1.031 | 1.926 | 0.024 | 0.04 | | | | |
| GEZ38ET-2RS | 38.1 | 61.913 | 33.325 | 28.575 | 54.7 | 0.6 | 1 | 6 | 235 | 560 | 0.42 |
| | 1.5 | 2.4375 | 1.312 | 1.125 | 2.154 | 0.024 | 0.04 | | | | |
| GEZ44ET-2RS | 44.45 | 71.438 | 38.887 | 33.325 | 63.9 | 0.6 | 1 | 6 | 320 | 765 | 0.64 |
| | 1.75 | 2.8125 | 1.531 | 1.312 | 2.511 | 0.024 | 0.04 | | | | |
| GEZ50ET-2RS | 50.8 | 80.963 | 44.45 | 38.1 | 73 | 0.6 | 1 | 6 | 415 | 1000 | 0.93 |
| | 2 | 3.1875 | 1.75 | 1.5 | 2.869 | 0.024 | 0.04 | | | | |
| GEZ57ET-2RS | 57.15 | 90.488 | 50.013 | 42.85 | 82 | 0.6 | 1 | 6 | 525 | 1260 | 1.3 |
| | 2.25 | 3.5625 | 1.969 | 1.687 | 3.223 | 0.024 | 0.04 | | | | |
| GEZ63ET-2RS | 63.5 | 100.013 | 55.55 | 47.625 | 92 | 1 | 1 | 6 | 655 | 1570 | 1.85 |
| | 2.5 | 3.9375 | 2.187 | 1.875 | 3.616 | 0.04 | 0.04 | | | | |
| GEZ69ET-2RS | 69.85 | 111.125 | 61.112 | 52.375 | 100 | 1 | 1 | 6 | 785 | 1880 | 2.4 |
| | 2.75 | 4.375 | 2.406 | 2.062 | 3.937 | 0.04 | 0.04 | | | | |
| GEZ76ET-2RS | 76.2 | 120.65 | 66.675 | 57.15 | 109.5 | 1 | 1 | 6 | 935 | 2250 | 3.1 |
| | 3 | 4.75 | 2.625 | 2.25 | 4.303 | 0.04 | 0.04 | | | | |
| GEZ82ET-2RS | 82.55 | 130.175 | 72.238 | 61.9 | 119 | 1 | 1 | 6 | 1100 | 2650 | 3.8 |
| | 3.25 | 5.125 | 2.844 | 2.437 | 4.685 | 0.04 | 0.04 | | | | |
| GEZ88ET-2RS | 88.9 | 139.7 | 77.775 | 66.675 | 128 | 1 | 1 | 6 | 1280 | 3070 | 4.8 |
| | 3.5 | 5.5 | 3.062 | 2.625 | 5.04 | 0.04 | 0.04 | | | | |
| GEZ95ET-2RS | 95.25 | 149.225 | 83.337 | 71.425 | 137 | 1 | 1 | 6 | 1460 | 3520 | 5.8 |
| | 3.75 | 5.875 | 3.281 | 2.812 | 5.393 | 0.04 | 0.04 | | | | |
| GEZ101ET-2RS | 101.6 | 158.75 | 88.9 | 76.2 | 146 | 1 | 1 | 6 | 1660 | 4000 | 7 |
| | 4 | 6.25 | 3.5 | 3 | 5.748 | 0.04 | 0.04 | | | | |
| GEZ107ET-2RS | 107.95 | 168.275 | 94.463 | 80.95 | 155 | 1 | 1 | 6 | 1880 | 4510 | 8.4 |
| | 4.25 | 6.625 | 3.719 | 3.187 | 6.102 | 0.04 | 0.04 | | | | |
| GEZ114ET-2RS | 114.3 | 177.8 | 100.013 | 85.725 | 164.5 | 1 | 1 | 6 | 2110 | 5070 | 9.8 |
| | 4.5 | 7 | 3.937 | 3.375 | 6.476 | 0.04 | 0.04 | | | | |
| GEZ120ET-2RS | 120.65 | 187.325 | 105.562 | 90.475 | 173.5 | 1 | 1 | 6 | 2350 | 5650 | 11.5 |
| | 4.75 | 7.375 | 4.156 | 3.562 | 6.83 | 0.04 | 0.04 | | | | |
| GEZ127ET-2RS | 127 | 196.85 | 111.125 | 95.25 | 183 | 1 | 1 | 6 | 2610 | 6270 | 13.5 |
| | 5 | 7.75 | 4.375 | 3.75 | 7.204 | 0.04 | 0.04 | | | | |
| GEZ152ET-2RS | 152.4 | 222.25 | 120.65 | 104.775 | 207 | 1 | 1 | 5 | 3250 | 7800 | 17.5 |
| | 6 | 8.75 | 4.75 | 4.125 | 8.15 | 0.04 | 0.04 | | | | |



向心关节轴承 Radial Spherical Plain Bearings



滑动摩擦副：钢 / PTFE 编织物

Sliding contact surfaces: Steel / PTFE fabric

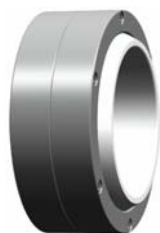
GEC(H)···XT

GEC(H)···XT-2RS

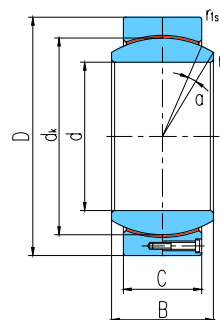
| 轴承型号 Bearing number | | 外形尺寸 Dimensions mm | | | | | | | | 额定载荷 Load ratings kN | | 重量 Weight ≈ kg |
|------------------------|--------------|-----------------------|-----|-----|-----|-----|-----------|------------|---------|-------------------------|---------------|----------------------|
| | | d | D | B | C | dk | rs min | rls min | α° ≈ | 动载荷 Dynamic | 静载荷 Static | |
| GEC320XT | GEC320XT-2RS | 320 | 440 | 160 | 135 | 380 | 1.1 | 3 | 4 | 9230 | 18460 | 78 |
| GEC340XT | GEC340XT-2RS | 340 | 460 | 160 | 135 | 400 | 1.1 | 3 | 3 | 9720 | 19440 | 83 |
| GEC360XT | GEC360XT-2RS | 360 | 480 | 160 | 135 | 420 | 1.1 | 3 | 3 | 10200 | 20400 | 87 |
| GEC380XT | GEC380XT-2RS | 380 | 520 | 190 | 160 | 450 | 1.5 | 4 | 4 | 12960 | 25920 | 129 |
| GEC400XT | GEC400XT-2RS | 400 | 540 | 190 | 160 | 470 | 1.5 | 4 | 3 | 13530 | 27060 | 135 |
| GEC420XT | GEC420XT-2RS | 420 | 560 | 190 | 160 | 490 | 1.5 | 4 | 3 | 14110 | 28220 | 141 |
| GEC440XT | GEC440XT-2RS | 440 | 600 | 218 | 185 | 520 | 1.5 | 4 | 3 | 17310 | 34620 | 196 |
| GEC460XT | GEC460XT-2RS | 460 | 620 | 218 | 185 | 540 | 1.5 | 4 | 3 | 17980 | 35960 | 204 |
| | | | | | | | | | | | | |
| GEH100XT | GEH100XT-2RS | 100 | 150 | 71 | 67 | 135 | 1 | 1 | 2 | 1350 | 3250 | 5.07 |
| GEH110XT | GEH110XT-2RS | 110 | 160 | 78 | 74 | 145 | 1 | 1 | 2 | 1600 | 3860 | 6.21 |
| GEH120XT | GEH120XT-2RS | 120 | 180 | 85 | 80 | 160 | 1 | 1 | 2 | 1920 | 4600 | 8.87 |
| GEH140XT | GEH140XT-2RS | 140 | 210 | 100 | 95 | 185 | 1 | 1 | 2 | 2630 | 6320 | 14.6 |
| GEH160XT | GEH160XT-2RS | 160 | 230 | 115 | 109 | 210 | 1 | 1 | 2 | 3430 | 8240 | 18.6 |
| GEH180XT | GEH180XT-2RS | 180 | 260 | 128 | 122 | 240 | 1.1 | 1.1 | 2 | 4390 | 10540 | 26.7 |
| GEH200XT | GEH200XT-2RS | 200 | 290 | 140 | 134 | 260 | 1.1 | 1.1 | 2 | 5220 | 12540 | 37.1 |
| GEH220XT | GEH220XT-2RS | 220 | 320 | 155 | 148 | 290 | 1.1 | 1.1 | 2 | 6430 | 15450 | 49.4 |
| GEH240XT | GEH240XT-2RS | 240 | 340 | 170 | 162 | 310 | 1.1 | 1.1 | 2 | 7530 | 18070 | 57.9 |
| GEH260XT | GEH260XT-2RS | 260 | 370 | 185 | 175 | 340 | 1.1 | 1.1 | 2 | 8920 | 21420 | 75.2 |
| GEH280XT | GEH280XT-2RS | 280 | 400 | 200 | 190 | 370 | 1.1 | 1.1 | 2 | 10540 | 25300 | 96 |
| GEH300XT | GEH300XT-2RS | 300 | 430 | 212 | 200 | 390 | 1.1 | 1.1 | 2 | 11700 | 28080 | 117 |
| GEH320XT | GEH320XT-2RS | 320 | 460 | 230 | 218 | 414 | 1.1 | 3 | 2 | 16240 | 32480 | 148 |
| GEH340XT | GEH340XT-2RS | 340 | 480 | 243 | 230 | 434 | 1.1 | 3 | 2 | 17960 | 35920 | 163 |
| GEH360XT | GEH360XT-2RS | 360 | 520 | 258 | 243 | 474 | 1.1 | 4 | 2 | 20730 | 41460 | 213 |
| GEH380XT | GEH380XT-2RS | 380 | 540 | 272 | 258 | 494 | 1.5 | 4 | 2 | 22940 | 45880 | 236 |
| GEH400XT | GEH400XT-2RS | 400 | 580 | 280 | 265 | 514 | 1.5 | 4 | 2 | 24510 | 49020 | 290 |
| GEH420XT | GEH420XT-2RS | 420 | 600 | 300 | 280 | 534 | 1.5 | 4 | 2 | 26910 | 53920 | 319 |



向心关节轴承 Radial Spherical Plain Bearings



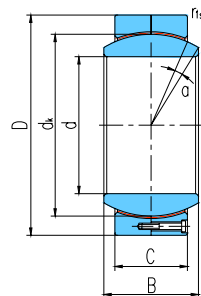
滑动摩擦副：钢 / PTFE 编织物
Sliding contact surfaces: Steel / PTFE fabric



| 轴承型号 Bearing number | 外形尺寸 Dimensions | | | | | | | | 额定载荷 Load ratings | | 重量 Weight ≈kg |
|------------------------|--------------------|-----|-----|-----|-----|-----------|------------|---------|----------------------|---------------|---------------------|
| | d | D | B | C | dk | rs min | r1s min | α° ≈ | 动载荷 Dynamic | 静载荷 Static | |
| GEC320HT | 320 | 440 | 160 | 135 | 380 | 1.1 | 3 | 4 | 9230 | 18460 | 78 |
| GEC340HT | 340 | 460 | 160 | 135 | 400 | 1.1 | 3 | 3 | 9720 | 19440 | 83 |
| GEC360HT | 360 | 480 | 160 | 135 | 420 | 1.1 | 3 | 3 | 10200 | 20400 | 87 |
| GEC380HT | 380 | 520 | 190 | 160 | 450 | 1.5 | 4 | 4 | 12960 | 25920 | 129 |
| GEC400HT | 400 | 540 | 190 | 160 | 470 | 1.5 | 4 | 3 | 13530 | 27060 | 135 |
| GEC420HT | 420 | 560 | 190 | 160 | 490 | 1.5 | 4 | 3 | 14110 | 28220 | 141 |
| GEC440HT | 440 | 600 | 218 | 185 | 520 | 1.5 | 4 | 3 | 17310 | 34620 | 196 |
| GEC460HT | 460 | 620 | 218 | 185 | 540 | 1.5 | 4 | 3 | 17980 | 35960 | 204 |
| GEC480HT | 480 | 650 | 230 | 195 | 565 | 2 | 5 | 3 | 19830 | 39660 | 239 |
| GEC500HT | 500 | 670 | 230 | 195 | 585 | 2 | 5 | 3 | 20530 | 41060 | 248 |
| GEC530HT | 530 | 710 | 243 | 205 | 620 | 2 | 5 | 3 | 22870 | 45740 | 294 |
| GEC560HT | 560 | 750 | 258 | 215 | 655 | 2 | 5 | 4 | 25340 | 50680 | 345 |
| GEC600HT | 600 | 800 | 272 | 230 | 700 | 2 | 5 | 3 | 28980 | 57960 | 413 |



向心关节轴承 Radial Spherical Plain Bearings

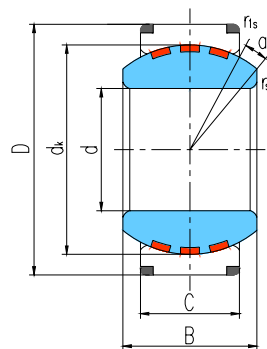


滑动摩擦副：钢 / PTFE 编织物
Sliding contact surfaces: Steel / PTFE fabric

| 轴承型号 Bearing number | 外形尺寸 Dimensions | | | | | | | | 额定载荷 Load ratings | | 重量 Weight ≈kg |
|------------------------|--------------------|------|-----|-----|------|-----------|------------|---------|----------------------|---------------|---------------------|
| | d | D | B | C | dk | rs min | r1s min | α° ≈ | 动载荷 Dynamic | 静载荷 Static | |
| GEH100HT | 100 | 150 | 71 | 67 | 135 | 1 | 1 | 2 | 1350 | 3250 | 5.07 |
| GEH110HT | 110 | 160 | 78 | 74 | 145 | 1 | 1 | 2 | 1600 | 3860 | 6.21 |
| GEH120HT | 120 | 180 | 85 | 80 | 160 | 1 | 1 | 2 | 1920 | 4600 | 8.87 |
| GEH140HT | 140 | 210 | 100 | 95 | 185 | 1 | 1 | 2 | 2630 | 6320 | 14.6 |
| GEH160HT | 160 | 230 | 115 | 109 | 210 | 1 | 1 | 2 | 3430 | 8240 | 18.6 |
| GEH180HT | 180 | 260 | 128 | 122 | 240 | 1.1 | 1.1 | 2 | 4390 | 10540 | 26.7 |
| GEH200HT | 200 | 290 | 140 | 134 | 260 | 1.1 | 1.1 | 2 | 5220 | 12540 | 37.1 |
| GEH220HT | 220 | 320 | 155 | 148 | 290 | 1.1 | 1.1 | 2 | 6430 | 15450 | 49.4 |
| GEH240HT | 240 | 340 | 170 | 162 | 310 | 1.1 | 1.1 | 2 | 7530 | 18070 | 57.9 |
| GEH260HT | 260 | 370 | 185 | 175 | 340 | 1.1 | 1.1 | 2 | 8920 | 21420 | 75.2 |
| GEH280HT | 280 | 400 | 200 | 190 | 370 | 1.1 | 1.1 | 2 | 10540 | 25300 | 96 |
| GEH300HT | 300 | 430 | 212 | 200 | 390 | 1.1 | 1.1 | 2 | 11700 | 28080 | 117 |
| GEH320HT | 320 | 460 | 230 | 218 | 414 | 1.1 | 3 | 2 | 16240 | 32480 | 148 |
| GEH340HT | 340 | 480 | 243 | 230 | 434 | 1.1 | 3 | 2 | 17960 | 35920 | 163 |
| GEH360HT | 360 | 520 | 258 | 243 | 474 | 1.1 | 4 | 2 | 20730 | 41460 | 213 |
| GEH380HT | 380 | 540 | 272 | 258 | 494 | 1.5 | 4 | 2 | 22940 | 45880 | 236 |
| GEH400HT | 400 | 580 | 280 | 265 | 514 | 1.5 | 4 | 2 | 24510 | 49020 | 290 |
| GEH420HT | 420 | 600 | 300 | 280 | 534 | 1.5 | 4 | 2 | 26910 | 53920 | 319 |
| GEH440HT | 440 | 630 | 315 | 300 | 574 | 1.5 | 4 | 2 | 30990 | 61980 | 379 |
| GEH460HT | 460 | 650 | 325 | 308 | 593 | 1.5 | 4 | 2 | 32870 | 65740 | 404 |
| GEH480HT | 480 | 680 | 340 | 320 | 623 | 2 | 5 | 2 | 35880 | 71760 | 463 |
| GEH500HT | 500 | 710 | 355 | 335 | 643 | 2 | 5 | 2 | 38770 | 77540 | 529 |
| GEH530HT | 530 | 750 | 375 | 355 | 673 | 2 | 5 | 2 | 43000 | 86000 | 620 |
| GEH560HT | 560 | 800 | 400 | 380 | 723 | 2 | 5 | 2 | 49450 | 98900 | 770 |
| GEH600HT | 600 | 850 | 425 | 400 | 773 | 2 | 6 | 2 | 55650 | 111300 | 903 |
| GEH630HT | 630 | 900 | 450 | 425 | 813 | 3 | 6 | 2 | 62190 | 124380 | 1092 |
| GEH670HT | 670 | 950 | 475 | 450 | 862 | 3 | 6 | 2 | 69820 | 139640 | 1270 |
| GEH710HT | 710 | 1000 | 500 | 475 | 912 | 3 | 6 | 2 | 77970 | 155940 | 1465 |
| GEH750HT | 750 | 1060 | 530 | 500 | 972 | 3 | 6 | 2 | 87480 | 174960 | 1750 |
| GEH800HT | 800 | 1120 | 565 | 530 | 1022 | 3 | 6 | 2 | 97490 | 194980 | 2029 |



向心关节轴承 Radial Spherical Plain Bearings



滑动摩擦副：钢 / 铜合金

Sliding contact surfaces: Steel / Copper alloy

| 轴承 型号 Bearing number | 外形尺寸 Dimensions | | | | | | | | 额定载荷 Load ratings kN | | 重量 Weight ≈kg |
|-------------------------------|--------------------|-----|-----|-----|----------------|-----------------------|------------------------|---------|-------------------------|---------------|---------------------|
| | d | D | B | C | d _k | r _s min | r _{1s} min | α° ≈ | 动载荷 Dynamic | 静载荷 Static | |
| GE100XF/Q | 100 | 150 | 70 | 55 | 130 | 1 | 1 | 7 | 710 | 1420 | 4.24 |
| GE110XF/Q | 110 | 160 | 70 | 55 | 140 | 1 | 1 | 6 | 770 | 1540 | 4.55 |
| GE120XF/Q | 120 | 180 | 85 | 70 | 160 | 1 | 1 | 6 | 1120 | 2240 | 7.77 |
| GE140XF/Q | 140 | 210 | 90 | 70 | 180 | 1 | 1 | 7 | 1260 | 2520 | 10.7 |
| GE160XF/Q | 160 | 230 | 105 | 80 | 200 | 1 | 1 | 8 | 1600 | 3200 | 13.5 |
| GE180XF/Q | 180 | 260 | 105 | 80 | 225 | 1.1 | 1.1 | 6 | 1800 | 3600 | 17.9 |
| GE200XF/Q | 200 | 290 | 130 | 100 | 250 | 1.1 | 1.1 | 7 | 2500 | 5000 | 27.3 |
| GE220XF/Q | 220 | 320 | 135 | 100 | 275 | 1.1 | 1.1 | 8 | 2750 | 5500 | 34.5 |
| GE240XF/Q | 240 | 340 | 140 | 100 | 300 | 1.1 | 1.1 | 8 | 3000 | 6000 | 38.3 |
| GE260XF/Q | 260 | 370 | 150 | 110 | 325 | 1.1 | 1.1 | 7 | 3570 | 7140 | 49.7 |
| GE280XF/Q | 280 | 400 | 155 | 120 | 350 | 1.1 | 1.1 | 6 | 4200 | 8400 | 63 |
| GE300XF/Q | 300 | 430 | 165 | 120 | 375 | 1.1 | 1.1 | 7 | 4500 | 9000 | 75.3 |
| | | | | | | | | | | | |
| GEC320XF/Q | 320 | 440 | 160 | 135 | 380 | 1.1 | 3 | 4 | 5130 | 10260 | 75.8 |
| GEC340XF/Q | 340 | 460 | 160 | 135 | 400 | 1.1 | 3 | 3 | 5400 | 10800 | 80.8 |
| GEC360XF/Q | 360 | 480 | 160 | 135 | 420 | 1.1 | 3 | 3 | 5670 | 11340 | 84.5 |
| GEC380XF/Q | 380 | 520 | 190 | 160 | 450 | 1.5 | 4 | 4 | 7200 | 14400 | 125 |
| GEC400XF/Q | 400 | 540 | 190 | 160 | 470 | 1.5 | 4 | 3 | 7520 | 15040 | 131 |
| GEC420XF/Q | 420 | 560 | 190 | 160 | 490 | 1.5 | 4 | 3 | 7840 | 15680 | 137 |
| GEC440XF/Q | 440 | 600 | 218 | 185 | 520 | 1.5 | 4 | 3 | 9620 | 19240 | 191 |
| GEC460XF/Q | 460 | 620 | 218 | 185 | 540 | 1.5 | 4 | 3 | 9990 | 19980 | 199 |

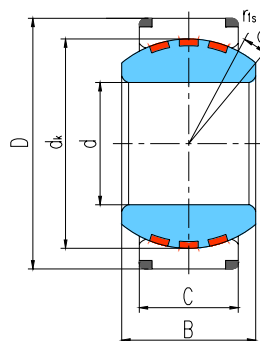


向心关节轴承 Radial Spherical Plain Bearings



滑动摩擦副：钢 / 铜合金

Sliding contact surfaces: Steel / Copper alloy



| 轴承 型号 Bearing number | 外形尺寸 Dimensions mm | | | | | | | | 额定载荷 Load ratings kN | | 重量 Weight ≈kg |
|-------------------------------|--------------------------|-----|-----|-----|-----|-----------|------------|---------|-------------------------|---------------|---------------------|
| | d | D | B | C | dk | rs min | rs' min | α° ≈ | 动载荷 Dynamic | 静载荷 Static | |
| GEH100XF/Q | 100 | 150 | 71 | 67 | 135 | 1 | 1 | 2 | 900 | 1800 | 4.85 |
| GEH110XF/Q | 110 | 160 | 78 | 74 | 145 | 1 | 1 | 2 | 1070 | 2140 | 5.9 |
| GEH120XF/Q | 120 | 180 | 85 | 80 | 160 | 1 | 1 | 2 | 1280 | 2560 | 8.49 |
| GEH140XF/Q | 140 | 210 | 100 | 95 | 185 | 1 | 1 | 2 | 1750 | 3500 | 14.1 |
| GEH160XF/Q | 160 | 230 | 115 | 109 | 210 | 1 | 1 | 2 | 2280 | 4560 | 17.9 |
| GEH180XF/Q | 180 | 260 | 128 | 122 | 240 | 1.1 | 1.1 | 2 | 2920 | 5840 | 25.9 |
| GEH200XF/Q | 200 | 290 | 140 | 134 | 260 | 1.1 | 1.1 | 2 | 3480 | 6960 | 35.9 |
| GEH220XF/Q | 220 | 320 | 155 | 148 | 290 | 1.1 | 1.1 | 2 | 4290 | 8580 | 48 |
| GEH240XF/Q | 240 | 340 | 170 | 162 | 310 | 1.1 | 1.1 | 2 | 5020 | 10040 | 56 |
| GEH260XF/Q | 260 | 370 | 185 | 175 | 340 | 1.1 | 1.1 | 2 | 5950 | 11900 | 72.8 |
| GEH280XF/Q | 280 | 400 | 200 | 190 | 370 | 1.1 | 1.1 | 2 | 7030 | 14060 | 93.3 |
| GEH300XF/Q | 300 | 430 | 212 | 200 | 390 | 1.1 | 1.1 | 2 | 7800 | 15600 | 114 |
| GEH320XF/Q | 320 | 460 | 230 | 218 | 414 | 1.1 | 3 | 2 | 9020 | 18040 | 144 |
| GEH340XF/Q | 340 | 480 | 243 | 230 | 434 | 1.1 | 3 | 2 | 9980 | 19960 | 158 |
| GEH360XF/Q | 360 | 520 | 258 | 243 | 474 | 1.1 | 4 | 2 | 11510 | 23020 | 207 |
| GEH380XF/Q | 380 | 540 | 272 | 258 | 494 | 1.5 | 4 | 2 | 12740 | 25480 | 230 |
| GEH400XF/Q | 400 | 580 | 280 | 265 | 514 | 1.5 | 4 | 2 | 13620 | 27240 | 283 |
| GEH420XF/Q | 420 | 600 | 300 | 280 | 534 | 1.5 | 4 | 2 | 14950 | 29900 | 312 |

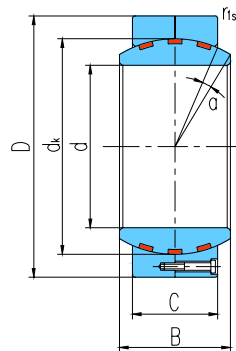


向心关节轴承 Radial Spherical Plain Bearings



滑动摩擦副：钢 / 铜合金

Sliding contact surfaces: Steel / Copper alloy



| 轴承 型号 Bearing number | 外形尺寸 Dimensions mm | | | | | | | | 额定载荷 Load ratings kN | | 重量 Weight ≈kg |
|-------------------------------|--------------------------|------|-----|-----|------|-----------|------------|---------|-------------------------|---------------|---------------------|
| | d | D | B | C | dk | rs min | r1s min | α° ≈ | 动载荷 Dynamic | 静载荷 Static | |
| GEH440HF/Q | 440 | 630 | 315 | 300 | 574 | 1.5 | 4 | 2 | 17220 | 34440 | 370 |
| GEH460HF/Q | 460 | 650 | 325 | 308 | 593 | 1.5 | 4 | 2 | 18260 | 36520 | 395 |
| GEH480HF/Q | 480 | 680 | 340 | 320 | 623 | 2 | 5 | 2 | 19930 | 39860 | 453 |
| GEH500HF/Q | 500 | 710 | 355 | 335 | 643 | 2 | 5 | 2 | 21540 | 43080 | 519 |
| GEH530HF/Q | 530 | 750 | 375 | 355 | 673 | 2 | 5 | 2 | 23890 | 47780 | 609 |
| GEH560HF/Q | 560 | 800 | 400 | 380 | 723 | 2 | 5 | 2 | 27470 | 54940 | 754 |
| GEH600HF/Q | 600 | 850 | 425 | 400 | 773 | 2 | 6 | 2 | 30920 | 61840 | 885 |
| GEH630HF/Q | 630 | 900 | 450 | 425 | 813 | 3 | 6 | 2 | 34550 | 69100 | 1072 |
| GEH670HF/Q | 670 | 950 | 475 | 450 | 862 | 3 | 6 | 2 | 38790 | 77580 | 1248 |
| GEH710HF/Q | 710 | 1000 | 500 | 475 | 912 | 3 | 6 | 2 | 43320 | 86640 | 1440 |
| GEH750HF/Q | 750 | 1060 | 530 | 500 | 972 | 3 | 6 | 2 | 48600 | 97200 | 1722 |
| GEH800HF/Q | 800 | 1120 | 565 | 530 | 1022 | 3 | 6 | 2 | 54160 | 108320 | 1998 |