



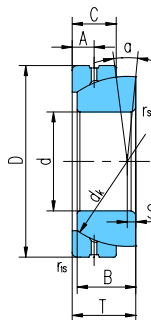
# 角接触关节轴承

## Angular Contact Spherical Plain Bearings



滑动摩擦副：钢 / 钢

Sliding contact surfaces: Steel / Steel



轴承 型号 Bearing number	外形尺寸 Dimensions										额定载荷 Load ratings kN		重量 Weight ≈kg
	d	D	B	C	T	d <sub>k</sub>	S	A	r <sub>s</sub> , r <sub>1s</sub> max	α° ≈	动载荷 Dynamic	静载荷 Static	
GACZ12S	12.7	22.225	6.86	4.83	7.62	18.26	1.3	2.39	0.51	7	6	18	0.013
	0.5	0.875	0.27	0.19	0.3	0.719	0.051	0.094	0.02				
GACZ15S	15.875	26.988	8.64	6.35	9.40	22.83	1.48	2.77	0.76	6	10	31	0.025
	0.625	1.0625	0.34	0.25	0.37	0.899	0.058	0.109	0.03				
GACZ19S	19.05	31.75	10.41	7.87	11.18	27.43	1.79	3.18	1	6	16	47	0.038
	0.75	1.25	0.41	0.31	0.44	1.08	0.07	0.125	0.04				
GACZ22S	22.225	36.512	12.19	9.65	13.21	31.95	2.02	4.37	2	5.5	22	66	0.049
	0.875	1.4375	0.48	0.38	0.52	1.258	0.08	0.172	0.08				
GACZ25S	25.4	41.275	13.97	11.18	15.24	36.50	2.54	5.16	2	6	29	87	0.085
	1	1.625	0.55	0.44	0.6	1.437	0.1	0.203	0.08				
GACZ31S	31.75	50.8	17.78	13.97	18.80	45.59	3.36	5.94	2	6	47	142	0.159
	1.25	2	0.7	0.55	0.74	1.795	0.132	0.234	0.08				
GACZ34S	34.925	55.562	19.56	15.24	21.34	49.20	3.69	7.14	2.54	4	53	159	0.213
	1.375	2.1875	0.77	0.6	0.84	1.937	0.145	0.281	0.1				
GACZ38S	38.1	61.912	21.34	16.76	23.11	54.74	3.93	7.92	2.54	5.5	66	197	0.301
	1.5	2.4375	0.84	0.66	0.91	2.155	0.155	0.312	0.1				
GACZ44S	44.45	71.438	24.89	20.07	27.18	63.88	4.72	8.33	2.54	6	91	273	0.458
	1.75	2.8125	0.98	0.79	1.07	2.515	0.186	0.328	0.1				
GACZ50S	50.8	80.962	28.70	23.37	31.24	73.02	5.51	9.52	3.56	5.5	122	365	0.671
	2	3.1875	1.13	0.92	1.23	2.875	0.217	0.375	0.14				
GACZ57S	57.15	90.488	32.26	26.67	35.31	82.17	6.18	11.51	3.56	5.5	155	466	0.948
	2.25	3.5625	1.27	1.05	1.39	3.235	0.243	0.453	0.14				
GACZ63S	63.5	100.013	36.07	29.97	39.12	91.19	6.79	12.7	3.56	5	196	589	1.13
	2.5	3.9375	1.42	1.18	1.54	3.59	0.267	0.5	0.14				
GACZ69S	69.85	111.125	39.62	32.38	43.18	100.33	7.46	13.08	4.6	5	231	694	1.75
	2.75	4.375	1.56	1.275	1.7	3.95	0.294	0.515	0.18				
GACZ76S	76.2	120.65	43.43	35.69	47.24	109.52	8.17	14.68	4.6	5	279	838	2.28
	3	4.75	1.71	1.405	1.86	4.312	0.322	0.578	0.18				
GACZ82S	82.55	130.175	47.24	39.24	51.56	118.74	9.04	16.66	4.6	5	332	995	2.89
	3.25	5.125	1.86	1.545	2.03	4.675	0.356	0.656	0.18				
GACZ88S	88.9	139.7	50.80	42.54	55.37	128.02	9.51	17.86	4.6	5	389	1167	3.57
	3.5	5.5	2	1.675	2.18	5.04	0.374	0.703	0.18				
GACZ95S	95.25	149.225	54.61	45.85	59.44	136.91	10.1	19.43	4.6	4.5	449	1348	4.35
	3.75	5.875	2.15	1.805	2.34	5.39	0.398	0.765	0.18				
GACZ101S	101.6	158.75	58.42	49.15	63.50	146.05	10.4	19.84	4.6	4.5	515	1545	5.26
	4	6.25	2.3	1.935	2.5	5.75	0.409	0.781	0.18				
GACZ114S	114.3	177.8	65.79	55.75	71.12	164.46	12.4	22.22	4.6	4.5	663	1990	7.76
	4.5	7	2.59	2.195	2.8	6.475	0.488	0.875	0.18				
GACZ127S	127	196.85	73.15	62.36	79.50	182.63	13.9	25.4	4.6	4.5	818	2455	11.07
	5	7.75	2.88	2.455	3.13	7.19	0.547	1	0.18				
GACZ152S	152.4	222.25	78.74	66.42	85.72	207.16	16.1	34.8	4.6	4.5	985	2955	17.37
	6	8.75	3.1	2.615	3.375	8.156	0.634	1.37	0.18				

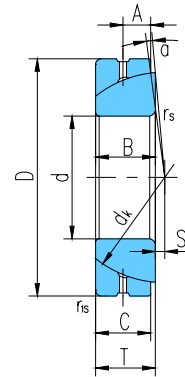


# 角接触关节轴承 Angular Contact Spherical Plain Bearings



滑动摩擦副：钢 / 钢

Sliding contact surfaces: Steel / Steel

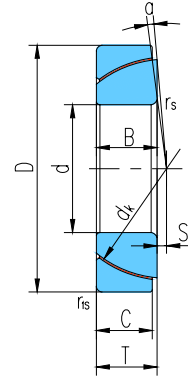


轴承 型号 Bearing number	外形尺寸 Dimensions mm										额定载荷 Load ratings kN		重量 Weight ≈kg
	d	D	B	C	T	dk	S	A	r <sub>s</sub> , r <sub>1s</sub> min	α° ≈	动载荷 Dynamic	静载荷 Static	
GAC25S	25	47	15	14	15	42	0.6	7.5	1	2.5	50	250	0.148
GAC28S	28	52	15	15	16	47	1	8	1	2	60	300	0.186
GAC30S	30	55	17	15	17	49.5	1.3	8.5	1	4.5	63	315	0.208
GAC32S	32	58	17	16	17	52	2	8.5	1	2	71	354	0.241
GAC35S	35	62	18	16	18	55.5	2.1	9	1	4	78	390	0.268
GAC40S	40	68	19	17	19	62	2.8	9.5	1	3.5	92	463	0.327
GAC45S	45	75	20	18	20	68.5	3.5	10	1	3	108	540	0.416
GAC50S	50	80	20	19	20	74	4.3	10	1	1.5	123	618	0.455
GAC55S	55	90	23	20	23	82	5	11.5	1.1	4	144	721	0.645
GAC60S	60	95	23	21	23	88.5	5.7	11.5	1.1	2.5	163	817	0.714
GAC65S	65	100	23	22	23	93.5	6.5	11.5	1.1	1	180	905	0.759
GAC70S	70	110	25	23	25	102	7.2	12.5	1.1	2	206	1030	1.04
GAC75S	75	115	25	24	25	107	7.9	12.5	1.1	1	220	1129	1.12
GAC80S	80	125	29	25.5	29	115	8.6	14.5	1.1	3.5	258	1290	1.54
GAC85S	85	130	29	26.5	29	122	9.4	14.5	1.1	2	284	1422	1.61
GAC90S	90	140	32	28	32	128.5	10.1	16	1.5	3.5	316	1580	2.09
GAC95S	95	145	32	29.5	32	135	10.8	16	1.5	2	350	1750	2.22
GAC100S	100	150	32	31	32	141	11.6	16	1.5	0.5	384	1923	2.34
GAC105S	105	160	35	32.5	35	148	12.3	17.5	2	2	423	2116	2.93
GAC110S	110	170	38	34	38	155	13	19	2	3	463	2318	3.68
GAC120S	120	180	38	37	38	168	14.5	19	2	0.5	547	2735	3.97
GAC130S	130	200	45	43	45	188	18	19	2.5	1	710	3550	5.92
GAC140S	140	210	45	43	45	198	19	19	2.5	1	740	3740	6.33
GAC150S	150	225	48	46	48	211	20	20.5	3	1	850	4270	8.01
GAC160S	160	240	51	49	51	225	20	22	3	1	970	4850	9.79
GAC170S	170	260	57	55	57	246	21	27	3	1	1190	5950	12.3
GAC180S	180	280	64	61	64	260	21	28	3	1	1395	6970	17.4
GAC190S	190	290	64	62	64	275	26	30	3	0.5	1500	7500	18.2
GAC200S	200	310	70	66	70	290	26	30	3	1.5	1680	8420	23.8



# 角接触关节轴承

## Angular Contact Spherical Plain Bearings



滑动摩擦副：钢 / PTFE 编织物

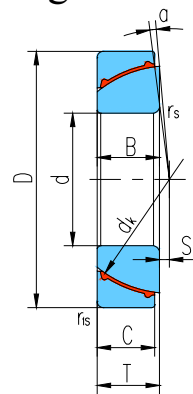
Sliding contact surfaces: Steel / PTFE fabric

轴承 型号 Bearing number	外形尺寸 Dimensions mm									额定载荷 Load ratings kN		重量 Weight ≈kg
	d	D	B	C	T	dk	S	rs, r1s min	α° ≈	动载荷 Dynamic	静载荷 Static	
GAC25T	25	47	15	14	15	42	0.6	1	2.5	89	225	0.148
GAC28T	28	52	15	15	16	47	1	1	2	100	270	0.186
GAC30T	30	55	17	15	17	49.5	1.3	1	4.5	110	285	0.208
GAC32T	32	58	17	16	17	52	2	1	2	125	320	0.241
GAC35T	35	62	18	16	18	55.5	2.1	1	4	135	340	0.268
GAC40T	40	68	19	17	19	62	2.8	1	3.5	160	400	0.327
GAC45T	45	75	20	18	20	68.5	3.5	1	3	190	470	0.416
GAC50T	50	80	20	19	20	74	4.3	1	1.5	215	540	0.455
GAC55T	55	90	23	20	23	82	5	1.1	4	250	630	0.645
GAC60T	60	95	23	21	23	88.5	5.7	1.1	2.5	285	710	0.714
GAC65T	65	100	23	22	23	93.5	6.5	1.1	1	315	790	0.759
GAC70T	70	110	25	23	25	102	7.2	1.1	2	360	900	1.04
GAC75T	75	115	25	24	25	107	7.9	1.1	1	395	980	1.12
GAC80T	80	125	29	25.5	29	115	8.6	1.1	3.5	450	1120	1.54
GAC85T	85	130	29	26.5	29	122	9.4	1.1	2	495	1240	1.61
GAC90T	90	140	32	28	32	128.5	10.1	1.5	3.5	550	1380	2.09
GAC95T	95	145	32	29.5	32	135	10.8	1.5	2	610	1530	2.22
GAC100T	100	150	32	31	32	141	11.6	1.5	0.5	670	1680	2.34
GAC105T	105	160	35	32.5	35	148	12.3	2	2	740	1850	2.93
GAC110T	110	170	38	34	38	155	13	2	3	810	2020	3.68
GAC120T	120	180	38	37	38	168	14.5	2	0.5	955	2390	3.97
GAC130T	130	200	45	43	45	188	18	2.5	1	1240	3110	5.92
GAC140T	140	210	45	43	45	198	19	2.5	1	1310	3270	6.33
GAC150T	150	225	48	46	48	211	20	3	1	1490	3730	8.01
GAC160T	160	240	51	49	51	225	20	3	1	1690	4240	9.79
GAC170T	170	260	57	55	57	246	21	3	1	2080	5200	12.3
GAC180T	180	280	64	61	64	260	21	3	1	2440	6100	17.4
GAC190T	190	290	64	62	64	275	26	3	0.5	2620	6560	18.2
GAC200T	200	310	70	66	70	290	26	3	1.5	2940	7360	23.8



# 角接触关节轴承

## Angular Contact Spherical Plain Bearings



滑动摩擦副：钢 / PTFE 塑料

Sliding contact surfaces: Steel / PTFE plastic

轴承 型号 Bearing number	外形尺寸 Dimensions mm									额定载荷 Load ratings kN		重量 Weight ≈kg
	d	D	B	C	T	d <sub>k</sub>	S	r <sub>s</sub> , r <sub>1s</sub> min	α° ≈	动载荷 Dynamic	静载荷 Static	
GAC25N	25	47	15	14	15	42	0.6	1	2.5	20	32	0.148
GAC30N	30	55	17	15	17	49.5	1.3	1	4.5	26	41	0.208
GAC35N	35	62	18	16	18	55.5	2.1	1	4	31	49	0.268
GAC40N	40	68	19	17	19	62	2.8	1	3.5	36	59	0.327
GAC45N	45	75	20	18	20	68.5	3.5	1	3	43	69	0.416
GAC50N	50	80	20	19	20	74	4.3	1	1.5	49	78	0.455
GAC60N	60	95	23	21	23	88.5	5.7	1.1	2.5	65	104	0.714
GAC70N	70	110	25	23	25	102	7.2	1.1	2	82	131	1.04
GAC80N	80	125	29	25.5	29	115	8.6	1.1	3.5	102	164	1.54
GAC90N	90	140	32	28	32	128.5	10.1	1.5	3.5	125	201	2.09
GAC100N	100	150	32	31	32	141	11.6	1.5	0.5	152	244	2.34
GAC110N	110	170	38	34	38	155	13	2	3	184	295	3.68
GAC120N	120	180	38	37	38	168	14.5	2	0.5	217	348	3.97