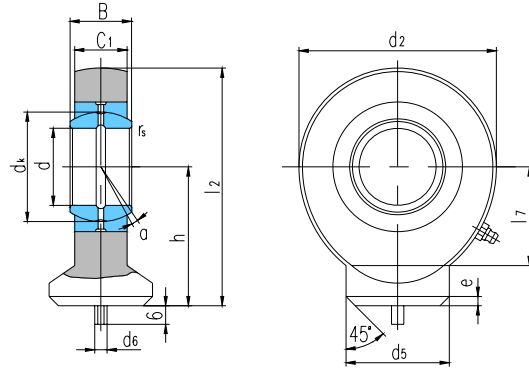




# 杆端关节轴承 Rod ends



滑动摩擦副：钢 / 钢

Sliding contact surfaces: Steel / Steel

轴承 型号 Bearing number	外形尺寸 Dimensions													额定载荷 Load ratings kN		重量 Weight ≈kg
	d	B	d <sub>k</sub>	C <sub>1</sub>	d <sub>2</sub>	h	l <sub>2</sub>	l <sub>7</sub>	d <sub>5</sub>	d <sub>6</sub>	e	r <sub>s</sub>	α° ≈	动载荷 Dynamic	静载荷 Static	
SK10E <sup>1)</sup>	10	9	16	7	29	24	38.5	15	15	3	2	0.3	12	8.1	15	0.041
SK12E <sup>1)</sup>	12	10	18	8	34	27	44	17.5	17.5	3	2	0.3	10	10	21	0.066
SK15ES <sup>2)</sup>	15	12	22	10	40	31	51	20	21	4	2.5	0.3	8	16	32	0.12
SK16ES <sup>2)</sup>	16	14	25	11	46	35	58	23	24	4	3	0.3	10	21	40	0.19
SK17ES <sup>2)</sup>	17	14	25	11	46	35	58	23	24	4	3	0.3	10	21	40	0.18
SK20ES	20	16	29	13	53	38	64.5	27.5	27.5	4	3	0.3	9	30	54	0.26
SK25ES	25	20	35.5	17	64	45	77	33	33.5	4	4	0.6	7	48	72	0.45
SK30ES	30	22	40.7	19	73	51	87.5	37.5	40	4	4	0.6	6	62	95	0.67
SK35ES	35	25	47	21	82	61	102	43	47	4	4	0.6	6	79	125	1.02
SK40ES	40	28	53	23	92	69	115	48	52	4	5	0.6	7	99	156	1.40
SK45ES	45	32	60	27	102	77	128	52	58	6	5	0.6	7	127	208	1.93
SK50ES	50	35	66	30	112	88	144	59	62	6	6	0.6	6	156	250	2.69
SK60ES	60	44	80	38	135	100	167.5	72.5	70	6	8	1	6	245	390	4.60
SK70ES	70	49	92	42	160	115	195	85.5	80	6	10	1	6	313	510	7.00
SK80ES	80	55	105	47	180	141	231	98	95	6	10	1	6	400	620	11.0

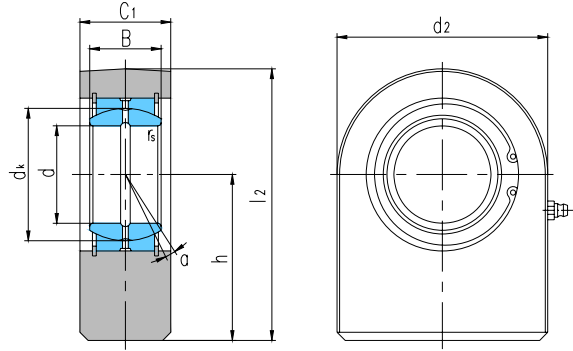
<sup>1)</sup>无润滑通道。No relubrication facility.

<sup>2)</sup>只能通过杆端眼孔润滑。Can only be relubricated through the rod end housing.

可装自润滑向心关节轴承。Can supply rod ends with maintenance-free spherical plain bearing.



# 杆端关节轴承 Rod ends



滑动摩擦副：钢 / 钢

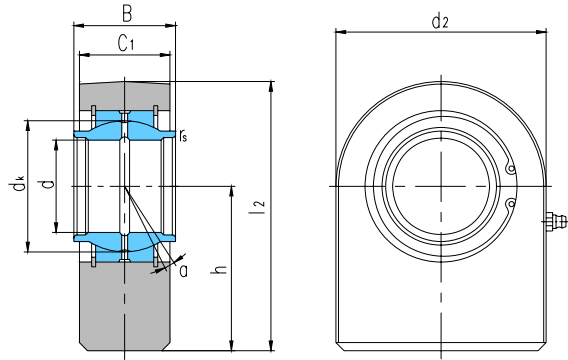
Sliding contact surfaces: Steel / Steel

轴承 型号 Bearing number	外形尺寸 Dimensions mm									额定载荷 Load ratings kN		重量 Weight ≈kg
	d	B	d <sub>k</sub>	C <sub>1</sub>	d <sub>2</sub>	h	l <sub>2</sub>	r <sub>s</sub>	α° ≈	动载荷 Dynamic	静载荷 Static	
SF15ES	15	12	22	16	45	31	53.5	0.3	8	16	53	0.22
SF16ES	16	14	25	17.5	48	35	59	0.3	10	21	59	0.29
SF17ES	17	14	25	17.5	48	35	59	0.3	10	21	59	0.28
SF20ES	20	16	29	19	50	38	63	0.3	9	30	67	0.36
SF25ES	25	20	35.5	23	55	45	72.5	0.6	7	48	69	0.53
SF30ES	30	22	40.7	28	65	51	83.5	0.6	6	62	118	0.85
SF35ES	35	25	47	30	83	61	102.5	0.6	6	79	196	1.50
SF40ES	40	28	53	35	100	69	119	0.6	7	99	305	2.42
SF45ES	45	32	60	40	110	77	132	0.6	7	127	386	3.39
SF50ES	50	35	66	40	123	88	149.5	0.6	6	156	441	4.24
SF60ES	60	44	80	50	140	100	170	1	6	245	570	7.10
SF70ES	70	49	92	55	164	115	197	1	6	313	724	10.7
SF80ES	80	55	105	60	180	141	231	1	6	400	804	15.1
SF90ES	90	60	115	65	226	150	263	1	5	488	1340	23.4
SF100ES	100	70	130	70	250	170	295	1	7	607	1516	33.1
SF110ES	110	70	140	80	295	185	332.5	1	6	654	2340	48.5
SF120ES	120	85	160	90	360	210	390	1	6	950	3210	79.5

可装自润滑向心关节轴承。Can supply rod ends with maintenance-free spherical plain bearing.



# 杆端关节轴承 Rod ends



滑动摩擦副：钢 / 钢

Sliding contact surfaces: Steel / Steel

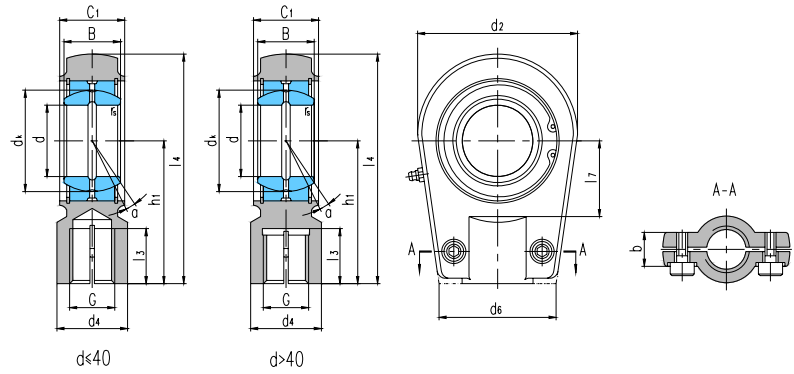
轴承 型号 Bearing number	外形尺寸 Dimensions mm									额定载荷 Load ratings kN		重量 Weight ≈kg
	d	B	dk	C <sub>1</sub>	d <sub>2</sub>	h	l <sub>2</sub>	r <sub>s</sub>	α° ≈	动载荷 Dynamic	静载荷 Static	
SFEW20ES	20	20	29	19	50	38	63	0.3	4	30	67	0.37
SFEW25ES	25	25	35.5	23	55	45	72.5	0.6	4	48	69	0.54
SFEW32ES	32	32	43	27	70	65	100	0.6	4	65	168	1.16
SFEW40ES	40	40	53	35	100	69	119	0.6	4	99	305	2.57
SFEW50ES	50	50	66	40	123	88	149.5	0.6	4	156	441	4.50
SFEW63ES	63	63	83	50	145	107	179.5	1	4	253	591	7.14
SFEW70ES	70	70	92	55	164	115	197	1	4	313	724	10.86
SFEW80ES	80	80	105	60	180	141	231	1	4	400	804	15.33
SFEW90ES	90	90	115	65	226	150	263	1	4	488	1340	24.00
SFEW100ES	100	100	130	70	250	170	295	1	4	607	1516	33.44
SFEW110ES	110	110	140	80	295	185	332.5	1	4	654	2340	49.46

可装自润滑向心关节轴承。 Can supply rod ends with maintenance-free spherical plain bearing.



# 杆端关节轴承

## Rod ends



滑动摩擦副：钢 / 钢

Sliding contact surfaces: Steel / Steel

轴承 型号 Bearing number	外形尺寸 Dimensions mm														额定载荷 Load ratings kN		锁紧 螺钉 Screw	重量 Weight ≈kg	
	d	B	d <sub>k</sub>	C <sub>1</sub>	d <sub>2</sub>	G 6H	h <sub>1</sub>	l <sub>3</sub>	l <sub>4</sub>	l <sub>7</sub>	d <sub>4</sub>	d <sub>6</sub>	b	r <sub>s</sub>	α° ≈	动载荷 Dynamic			静载荷 Static
SIR20ES	20	16	29	19	56	M16×1.5	50	17	80	25	25	46	20	0.3	9	30	81	M8×20	0.44
SIR25ES	25	20	35.5	23	56	M16×1.5	50	17	80	25	25	46	21	0.6	7	48	72	M8×20	0.47
SIR30ES	30	22	40.7	28	64	M22×1.5	60	23	94	30	32	50	26	0.6	6	62	106	M8×25	0.77
SIR35ES	35	25	47	30	78	M28×1.5	70	29	112	38	40	66	28	0.6	6	79	153	M10×30	1.24
SIR40ES	40	28	53	35	94	M35×1.5	85	36	135	45	49	76	33	0.6	7	99	250	M10×35	2.12
SIR50ES	50	35	66	40	116	M45×1.5	105	45	168	55	61	90	37	0.6	6	156	365	M12×40	3.74
SIR60ES	60	44	80	50	130	M58×1.5	130	59	200	65	75	120	46	1	6	245	400	M16×45	6.49
SIR60ES-D <sup>1)</sup>																			
SIR70ES	70	49	92	55	154	M65×1.5	150	66	232	75	86	130	51	1	6	313	540	M16×50	9.88
SIR70ES-D <sup>1)</sup>																			
SIR80ES	80	55	105	60	176	M80×2	170	81	265	80	105	160	55	1	6	400	670	M20×55	14.2
SIR80ES-D <sup>1)</sup>																			
SIR90ES	90	60	115	65	206	M100×2	210	101	323	90	124	180	60	1	5	488	980	M20×60	23.5
SIR90ES-D <sup>1)</sup>																			
SIR100ES	100	70	130	70	231	M110×2	235	111	360	105	138	200	65	1	7	607	1120	M24×65	32.14
SIR110ES	110	70	140	80	266	M120×3	265	125	407	115	152	220	74	1	6	654	1700	M24×80	47.6
SIR120ES	120	85	160	90	340	M130×3	310	135	490	140	172	257	84	1	6	950	2900	M24×80	72

<sup>1)</sup>杆端体采用碳钢锻造。Rod end is made of carbon steel.

可装自润滑向心关节轴承。Can supply rod ends with maintenance-free spherical plain bearing.

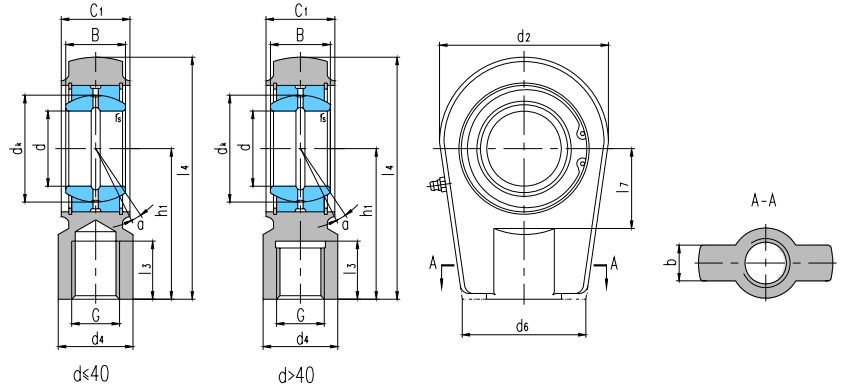
若是左旋螺纹，轴承型号和螺纹标记需加“L”和“左”，例如：SILR40ES M35×1.5 左-6H。

For left-hand thread, suffix “L” is added to bearings number and thread sign, e.g. SILR40ES M35×1.5L-6H.



# 杆端关节轴承

## Rod ends



滑动摩擦副：钢 / 钢

Sliding contact surfaces: Steel / Steel

轴承 型号 Bearing number	外形尺寸 Dimensions															额定载荷 Load ratings		重量 Weight ≈kg
	mm															kN		
	d	B	d <sub>k</sub>	C <sub>1</sub>	d <sub>2</sub>	G 6H	h <sub>1</sub>	l <sub>3</sub>	l <sub>4</sub>	l <sub>7</sub>	d <sub>4</sub>	d <sub>6</sub>	b	r <sub>s</sub>	α° ≈	动载荷 Dynamic	静载荷 Static	
SIRN20ES	20	16	29	19	56	M16×1.5	50	17	80	25	25	46	20	0.3	9	30	81	0.44
SIRN25ES	25	20	35.5	23	56	M16×1.5	50	17	80	25	25	46	21	0.6	7	48	72	0.47
SIRN30ES	30	22	40.7	28	64	M22×1.5	60	23	94	30	32	50	26	0.6	6	62	106	0.77
SIRN35ES	35	25	47	30	78	M28×1.5	70	29	112	38	40	66	28	0.6	6	79	153	1.24
SIRN40ES	40	28	53	35	94	M35×1.5	85	36	135	45	49	76	33	0.6	7	99	250	2.12
SIRN50ES	50	35	66	40	116	M45×1.5	105	45	168	55	61	90	37	0.6	6	156	365	3.74
SIRN60ES	60	44	80	50	130	M58×1.5	130	59	200	65	75	120	46	1	6	245	400	6.49
SIRN60ES-D <sup>1)</sup>																		
SIRN70ES	70	49	92	55	154	M65×1.5	150	66	232	75	86	130	51	1	6	313	540	9.88
SIRN70ES-D <sup>1)</sup>																		
SIRN80ES	80	55	105	60	176	M80×2	170	81	265	80	105	160	55	1	6	400	670	14.2
SIRN80ES-D <sup>1)</sup>																		
SIRN90ES	90	60	115	65	206	M100×2	210	101	323	90	124	180	60	1	5	488	980	23.5
SIRN90ES-D <sup>1)</sup>																		
SIRN100ES	100	70	130	70	231	M110×2	235	111	360	105	138	200	65	1	7	607	1120	32.14
SIRN110ES	110	70	140	80	266	M120×3	265	125	407	115	152	220	74	1	6	654	1700	47.6
SIRN120ES	120	85	160	90	340	M130×3	310	135	490	140	172	257	84	1	6	950	2900	72

<sup>1)</sup>杆端体采用碳钢锻造。Rod end is made of carbon steel.

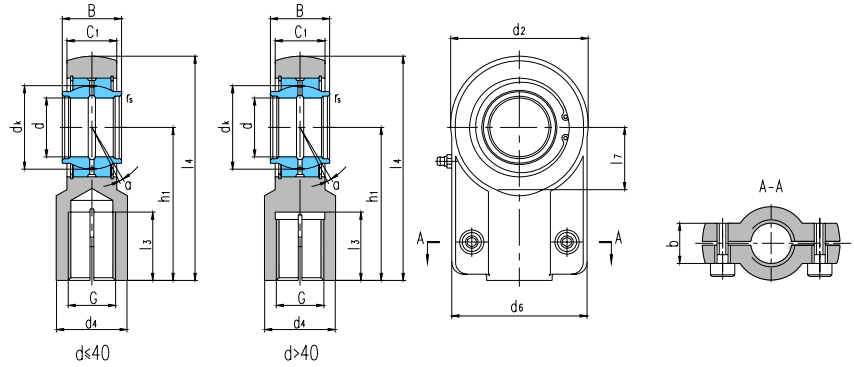
可装自润滑向心关节轴承。Can supply rod ends with maintenance-free spherical plain bearing.

若是左旋螺纹，轴承型号和螺纹标记需加“L”和“左”，例如：SILRN40ES M35×1.5 左-6H。

For left-hand thread, suffix “L” is added to bearings number and thread sign, e.g. SILRN40ES M35×1.5L-6H.



# 杆端关节轴承 Rod ends



滑动摩擦副：钢 / 钢

Sliding contact surfaces: Steel / Steel

轴承 型号 Bearing number	外形尺寸 Dimensions															额定载荷 Load Ratings kN		锁紧 螺钉 Screw	重量 Weight ≈kg
	mm															动载荷 Dynamic	静载荷 Static		
	d	B	d <sub>K</sub>	C <sub>1</sub>	d <sub>2</sub>	G 6H	h <sub>1</sub>	l <sub>3</sub>	l <sub>4</sub>	l <sub>7</sub>	d <sub>4</sub>	d <sub>6</sub>	b	r <sub>s</sub>	α°				
SIGEW12ES <sup>1)</sup>	12	12	18	11	32	M12×1.25	38	17	54	14	16	32	15	0.3	4	10	24.5	M5×16	0.11
SIGEW16ES	16	16	23	14	40	M14×1.5	44	19	64	18	21	40	15	0.3	4	17	36.5	M6×16	0.20
SIGEW20ES	20	20	29	17	47	M16×1.5	52	23	77	22	25	47	19	0.3	4	30	48	M8×20	0.35
SIGEW25ES	25	25	35.5	22	58	M20×1.5	65	29	96	27	30	54	19	0.6	4	48	78	M8×20	0.62
SIGEW32ES	32	32	43	28	71	M27×2	80	42	118.5	32	38	66	22	0.6	4	65	114	M10×25	1.15
SIGEW40ES	40	40	53	33	90	M33×2	97	52.5	146	41	47	80	26	0.6	4	99	204	M10×25	2.18
SIGEW50ES	50	50	66	40	109	M42×2	120	63.5	179.5	50	58	96	32	0.6	4	156	310	M12×35	3.96
SIGEW63ES	63	63	83	53	136	M48×2	140	72	211	62	70	114	38	1	4	253	430	M16×40	7.23
SIGEW63ES-D																			
SIGEW70ES	70	70	92	57	155	M56×2	160	84	245	70	80	135	42	1	4	313	540	M16×40	11.1
SIGEW70ES-D																			
SIGEW80ES	80	80	105	67	170	M64×3	180	92.5	270	78	90	148	48	1	4	400	695	M20×50	15.01
SIGEW80ES-D																			
SIGEW90ES	90	90	115	72	185	M72×3	195	103	296	85	100	160	52	1	4	488	750	M20×55	19.1
SIGEW100ES	100	100	130	85	211	M80×3	210	108	322.5	98	110	178	62	1	4	607	1060	M24×60	25.5
SIGEW110ES	110	110	140	88	235	M90×3	235	118	364	105	125	190	62	1	4	654	1200	M24×60	36.6
SIGEW125ES	125	125	160	103	265	M100×3	260	125	405	120	135	200	72	1	4	950	1430	M24×70	52.6
SIGEW160ES	160	160	200	130	326	M125×4	310	138	488	150	165	250	82	1	4	1360	2200	M24×80	79
SIGEW200ES	200	200	250	162	418	M160×4	390	173	620	195	215	320	102	1	4	2120	3650	M30×100	164

<sup>1)</sup>只能通过杆端眼孔润滑。Can only be relubricated through the rod end housing.

<sup>2)</sup>杆端体采用碳钢锻造。Rod end is made of carbon steel.

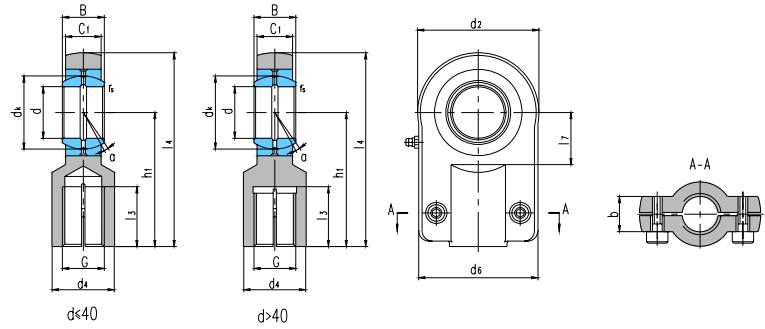
可装自润滑向心关节轴承。Can supply rod ends with maintenance-free spherical plain bearing.

若是左旋螺纹，轴承型号和螺纹标记需加“L”和“左”，例如：SILGEW40ES M33×2 左-6H。

For left-hand thread, suffix “L” is added to bearings number and thread sign, e.g. SILGEW40ES M33×2L-6H.



# 杆端关节轴承 Rod ends



滑动摩擦副：钢 / 钢

Sliding contact surfaces: Steel / Steel

轴承 型号 Bearing number	外形尺寸 Dimensions															额定载荷 Load Ratings kN		锁紧 螺钉 Screw	重量 Weight ≈kg
	d	B	d <sub>K</sub>	C <sub>1</sub>	d <sub>2</sub>	G 6H	h <sub>1</sub>	l <sub>3</sub>	l <sub>4</sub>	l <sub>7</sub>	d <sub>4</sub>	d <sub>6</sub>	b	r <sub>s</sub>	α° ≈	动载荷 Dynamic	静载荷 Static		
SIQ12E <sup>1)</sup>	12	10	18	8	35	M10×1.25	42	15	59.5	16	17	35	13	0.3	10	10	17	M6×12	0.12
SIQ16ES <sup>2)</sup>	16	14	25	11	45	M12×1.25	48	17	70.5	20	21	45	13	0.3	10	21	28.5	M6×12	0.22
SIQ20ES <sup>2)</sup>	20	16	29	13	55	M14×1.5	58	19	85.5	25	25	55	17	0.3	9	30	42.5	M8×16	0.43
SIQ25ES	25	20	35.5	17	65	M16×1.5	68	23	100.5	30	30	62	17	0.6	7	48	67	M8×16	0.67
SIQ30ES	30	22	40.7	19	80	M20×1.5	85	29	125	35	36	77	19	0.6	6	62	108	M10×20	1.25
SIQ40ES	40	28	53	23	100	M27×2	105	37	155	45	45	90	23	0.6	7	99	156	M10×25	2.16
SIQ50ES	50	35	66	30	120	M33×2	130	54	190	58	55	105	30	0.6	6	156	245	M12×30	3.90
SIQ60ES	60	44	80	38	160	M42×2	150	65	230	68	68	134	36	1	6	245	380	M16×35	8.2
SIQ80ES	80	55	105	47	205	M48×2	185	75	287.5	92	90	156	45	1	6	400	585	M20×45	16.2
SIQ100ES	100	70	130	57	240	M64×3	240	102	360	116	110	190	55	1	7	607	865	M24×55	28.4

1) 无润滑通道。No relubrication facility.

2) 只能通过杆端眼孔润滑。Can only be relubricated through the rod end housing.

杆端体采用碳钢锻造。Rod end is made of carbon steel.

可装自润滑向心关节轴承。Can supply rod ends with maintenance-free spherical plain bearing.

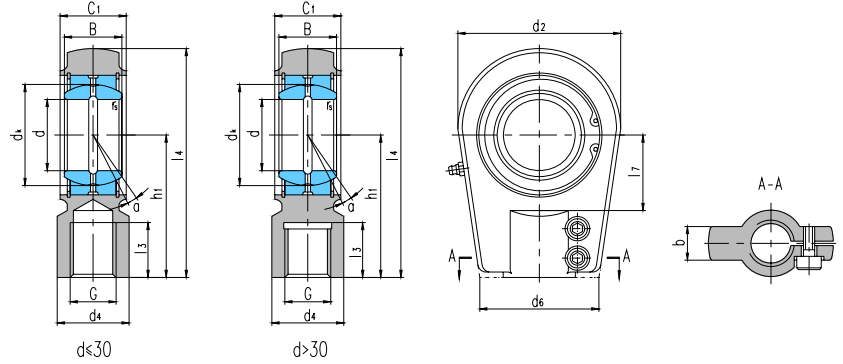
若是左旋螺纹，轴承型号和螺纹标记需加“L”和“左”，例如：SILQ40ES M27×2 左-6H。

For left-hand thread, suffix “L” is added to bearings number and thread sign, e.g. SILQ40ES M27×2L-6H.



# 杆端关节轴承

## Rod end



滑动摩擦副: 钢 / 钢

Sliding contact surfaces: Steel / Steel

轴承 型号 Bearing number	外形尺寸 Dimensions															额定载荷 Load ratings		锁紧 螺钉 Screw	重量 Weight ≈kg
	mm															kN			
	d	B	d <sub>K</sub>	C <sub>1</sub>	d <sub>2</sub>	G 6H	h <sub>1</sub>	l <sub>3</sub>	l <sub>4</sub>	l <sub>7</sub>	d <sub>4</sub>	d <sub>6</sub>	b	r <sub>s</sub>	α° ≈	动载荷 Dynamic	静载荷 Static		
SIA25ES	25	20	35.5	23	56	M18×2	65	30	95	29	28	48	21	0.6	7	48	72	M8×20	0.62
SIA30ES	30	22	40.7	28	64	M24×2	75	35	109	34	34	56	26	0.6	6	62	106	M8×25	0.88
SIA35ES	35	25	47	30	78	M30×2	90	46	132	40	45	65	28	0.6	6	79	153	M10×30	1.52
SIA40ES	40	28	53	35	94	M39×3	105	56	155	44	56.5	77	33	0.6	7	99	250	M12×35	2.43
SIA50ES	50	35	66	40	116	M50×3	135	76	198	55	70	88	36	0.6	6	156	365	M12×35	4.75
SIA60ES	60	44	80	50	130	M64×3	170	96	240	65	87	118	46	1	6	245	400	M16×45	8.55
SIA70ES	70	49	92	55	154	M80×3	195	112	277	75	110	128	51	1	6	313	540	M16×50	12.24
SIA80ES	80	55	105	60	176	M90×3	210	122	305	80	128	156	55	1	6	400	670	M20×55	18.35
SIA90ES	90	60	115	65	210	M100×3	250	142	365	90	152	167	60	1	5	488	980	M20×60	31.56
SIA100ES	100	70	130	70	230	M110×4	275	150	400	105	170	171	65	1	7	607	1120	M20×60	34
SIA110ES	110	70	140	80	264	M120×4	300	160	442	115	180	187	75	1	6	654	1700	M24×75	44
SIA120ES	120	85	160	90	340	M150×4	360	192	540	140	210	240	85	1	6	950	2900	M24×85	75
SIA140ES	140	90	180	110	380	M160×4	420	210	620	185	230	244	105	1	7	1070	3350	M30×100	160
SIA160ES	160	105	200	110	480	M180×4	460	220	710	200	260	268	105	1	8	1360	4302	M30×100	185

可装自润滑向心关节轴承。Can supply rod ends with maintenance-free spherical plain bearing.

若是左旋螺纹，轴承型号和螺纹标记需加“L”和“左”，例如：SILA40ES M39×3 左-6H。

For left-hand thread, suffix “L” is added to bearings number and thread sign, e.g. SILA40ES M39×3L-6H.