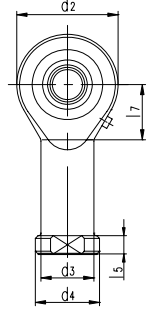
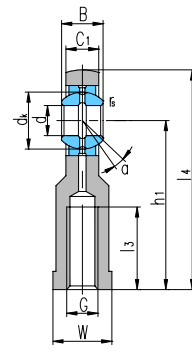
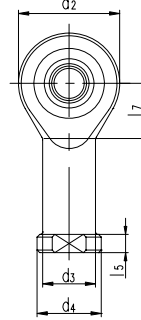
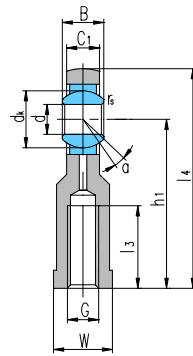




杆端关节轴承 Rod ends



滑动摩擦副：钢 / 钢

SI...E

SI...ES

Sliding contact surfaces: Steel / Steel

轴承 型号 Bearing number	外形尺寸 Dimensions																额定载荷 Load Ratings		重量 Weight ≈kg
	d	B	d _K	C ₁ max	d ₂	G 6H	h ₁	l ₃ min	l ₄	l ₅	l ₇	W	d ₃	d ₄	r _s min	α° ≈	动载荷 Dynamic	静载荷 Static	
SI5E ¹⁾	5	6	10	4.5	21	M5	30	11	40.5	5	11.5	10	10	13	0.3	13	3.4	8.1	0.021
SI6E ¹⁾	6	6	10	4.5	21	M6	30	11	40.5	5	11.5	11	11	13	0.3	13	3.4	8.1	0.021
SI8E ¹⁾	8	8	13	6.5	24	M8	36	15	48	5	13	13	13	16	0.3	15	5.5	12.9	0.039
SI10E ¹⁾	10	9	16	7.5	29	M10	43	20	57.5	6.5	15	16	16	19	0.3	12	8.1	17.6	0.065
SI12E ¹⁾	12	10	18	8.5	34	M12	50	23	67	7	18	18	19	22	0.3	10	10	24.5	0.096
SI15ES ²⁾	15	12	22	10.5	40	M14	61	30	81	8	21	21	21	26	0.3	8	16	36	0.16
SI17ES ²⁾	17	14	25	11.5	46	M16	67	34	90	10	23	27	25	29	0.3	10	21	45	0.24
SI20ES ²⁾	20	16	29	13.5	53	M20×1.5	77	40	103.5	10	25.5	30	28	34	0.3	9	30	60	0.35
SI25ES	25	20	35.5	18	64	M24×2	94	48	126	12	33	36	35	42	0.6	7	48	83	0.66
SI30ES	30	22	40.7	20	73	M30×2	110	56	146.5	15	37.5	46	42	50	0.6	6	62	110	0.98
SI35ES	35	25	47	22	82	M36×3	125	60	166	15	40	55	48	58	0.6	6	79	146	1.5
SI40ES	40	28	53	24	92	M39×3	142	65	188	18	47	60	52	65	0.6	7	99	180	2.1
SI45ES	45	32	60	28	102	M42×3	145	65	196	20	52	65	58	70	0.6	7	127	240	2.7
SI50ES	50	35	66	31	112	M45×3	160	68	216	20	57	70	62	75	0.6	6	156	290	3.5
SI60ES	60	44	80	39	135	M52×3	175	70	242.5	20	68.5	80	70	88	1	6	245	450	5.6
SI70ES	70	49	92	43	160	M56×4	200	80	280	20	81	85	80	98	1	6	313	610	8.3
SI80ES	80	55	105	48	180	M64×4	230	85	320	25	91	95	95	110	1	6	400	750	13

¹⁾不能润滑。Can not be relubricated.

²⁾只能通过杆端眼孔润滑。Can only be relubricated through the rod end housing.

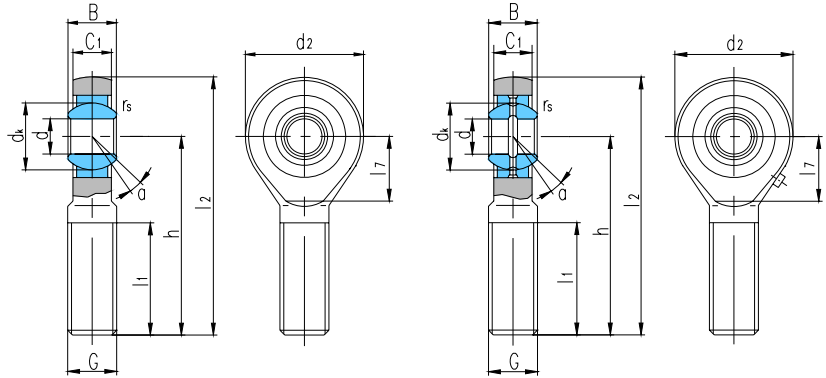
可提供不同螺距或螺纹精度有特殊要求的杆端关节轴承。Can supply other rod ends with different pitch or accuracy of thread.

若是左旋螺纹，轴承型号和螺纹标记需加“L”和“左”，例如：SIL20ES M20×1.5 左-6H。

For left-hand thread, suffix “L” is added to bearings number and thread sign, e.g. SIL20ES M20×1.5L-6H.



杆端关节轴承 Rod ends



滑动摩擦副：钢 / 钢

SA...E

SA...ES

Sliding contact surfaces: Steel / Steel

轴承 型号 Bearing number	外形尺寸 Dimensions mm												额定载荷 Load ratings kN		重量 Weight ≈kg
	d	B	d _k	C ₁ max	d ₂	G 6g	h	l ₁ min	l ₂	l ₇	r _s min	α° ≈	动载荷 Dynamic	静载荷 Static	
SA5E ¹⁾	5	6	10	4.5	21	M5	36	16	46.5	11.5	0.3	13	3.4	3.9	0.017
SA6E ¹⁾	6	6	10	4.5	21	M6	36	16	46.5	11.5	0.3	13	3.4	5.5	0.017
SA8E ¹⁾	8	8	13	6.5	24	M8	42	21	54	13	0.3	15	5.5	10	0.029
SA10E ¹⁾	10	9	16	7.5	29	M10	48	26	62.5	15.5	0.3	12	8.1	16	0.050
SA12E ¹⁾	12	10	18	8.5	34	M12	54	28	71	18	0.3	10	10	23	0.066
SA15ES ²⁾	15	12	22	10.5	40	M14	63	34	83	21	0.3	8	16	32	0.12
SA17ES ²⁾	17	14	25	11.5	46	M16	69	36	92	24	0.3	10	21	44	0.19
SA20ES ²⁾	20	16	29	13.5	53	M20×1.5	78	43	104.5	25.5	0.3	9	30	60	0.31
SA25ES	25	20	35.5	18	64	M24×2	94	53	126	31	0.6	7	48	83	0.56
SA30ES	30	22	40.7	20	73	M30×2	110	65	146.5	35.5	0.6	6	62	110	0.89
SA35ES	35	25	47	22	82	M36×3	140	82	181	41	0.6	6	79	146	1.4
SA40ES	40	28	53	24	92	M39×3	150	86	196	47	0.6	7	99	180	1.8
SA45ES	45	32	60	28	102	M42×3	163	92	214	52	0.6	7	127	240	2.5
SA50ES	50	35	66	31	112	M45×3	185	104	241	60	0.6	6	156	290	3.6
SA60ES	60	44	80	39	135	M52×3	210	115	277.5	75.5	1.0	6	245	450	5.7
SA70ES	70	49	92	43	160	M56×4	235	125	315	95	1.0	6	313	610	7.9
SA80ES	80	55	105	48	180	M64×4	270	140	360	105.5	1.0	6	400	750	12

¹⁾不能润滑。Can not be relubricated.

²⁾只能通过杆端眼孔润滑。Can only be relubricated through the rod end housing.

可提供不同螺距或螺纹精度有特殊要求的杆端关节轴承。Can supply other rod ends with different pitch or accuracy of thread.

若是左旋螺纹，轴承型号和螺纹标记需加“L”和“左”，例如：SAL20ES M20×1.5 左-6g。

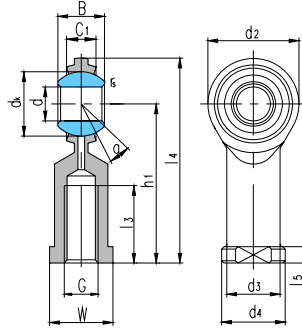
For left-hand thread, suffix “L” is added to bearings number and thread sign, e.g. SAL20ES M20×1.5L-6g.



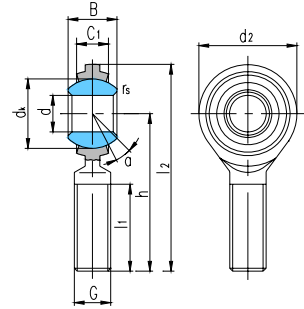
杆端关节轴承 Rod ends



滑动摩擦副：钢 / 钢



SIJ...



SAJ...

Sliding contact surfaces: Steel / Steel

轴承 型号 Bearing number	外形尺寸 Dimensions															额定载荷 Load ratings kN		重量 Weight ≈kg
	d	B	d _k	C ₁ max	d ₂	G	h ₁	l ₃ min	l ₄	l ₅	W	d ₃	d ₄	r _s min	α° ≈	动载荷 Dynamic	静载荷 Static	
SIJ5	5	8	11.112	7	16	M5	27	12.5	35	4	10	9	12	0.3	7	2.3	5.9	0.016
SIJ6	6	9	12.7	7	18	M6	30	13.5	39	5	11	10	13	0.3	11	3.2	6.5	0.020
SIJ8	8	12	15.875	9	22	M8	36	16	47	5	14	12.5	16	0.3	14	5.3	8	0.037
SIJ10	10	14	19.05	11	26	M10	43	19.5	56	6.5	17	15	19	0.3	12	7.3	10.5	0.061
SIJ12	12	16	22.225	12	30	M12	50	24	65	6.5	19	17.5	22	0.3	13	8.5	13	0.089
SIJ14	14	19	25.4	14	34	M14	57	27	74	8	22	20	25	0.3	14	12	17	0.135
SIJ16	16	21	28.575	15	38	M16	64	33	83	8	22	22	27	0.3	15	16.5	21	0.171
SIJ18	18	23	31.75	17	42	M18×1.5	71	36	92	10	27	25	31	0.6	14	20	25.5	0.246
SIJ20	20	25	34.925	18	46	M20×1.5	77	40	100	10	30	27.5	34	0.6	14	23	30	0.314
SIJ22	22	28	38.1	20	50	M22×1.5	84	43	109	12	32	30	37	0.6	15	27.5	35.5	0.410

轴承 型号 Bearing number	外形尺寸 Dimensions											额定载荷 Load ratings kN		重量 Weight ≈kg
	d	B	d _k	C ₁ max	d ₂	G	h	l ₁ min	l ₂	r _s min	α° ≈	动载荷 Dynamic	静载荷 Static	
SAJ5	5	8	11.112	7	16	M5	33	20	41	0.3	7	2.3	2.5	0.011
SAJ6	6	9	12.7	7	18	M6	36	22	45	0.3	11	3.2	4	0.015
SAJ8	8	12	15.875	9	22	M8	42	25	53	0.3	14	5.3	7.5	0.030
SAJ10	10	14	19.05	11	26	M10	48	29	61	0.3	12	7.3	10.5	0.048
SAJ12	12	16	22.225	12	30	M12	54	33	69	0.3	13	8.5	13	0.076
SAJ14	14	19	25.4	14	34	M14	60	36	77	0.3	14	12	17	0.115
SAJ16	16	21	28.575	15	38	M16	66	40	85	0.3	15	16.5	21	0.159
SAJ18	18	23	31.75	17	42	M18×1.5	72	44	93	0.6	14	20	25.5	0.222
SAJ20	20	25	34.925	18	46	M20×1.5	78	47	101	0.6	14	23	30	0.292
SAJ22	22	28	38.1	20	50	M22×1.5	84	51	109	0.6	15	27.5	35.5	0.381

可提供不同螺纹精度要求的杆端关节轴承。Can supply other rod ends with different accuracy of thread.

可提供滑动摩擦副为钢 / PTFE 复合材料或钢 / PTFE 编织物的杆端关节轴承。Can supply other rod ends with Sliding contact surfaces Steel / PTFE composite material or Steel / PTFE fabric.

若是左旋螺纹，轴承型号和螺纹标记需加“L”和“左”，例如：SILJ12 M12 左-6H，SALJ12 M12 左-6g。

For left-hand thread, suffix “L” is added to bearings number and suffix “LH” is added to thread sign,

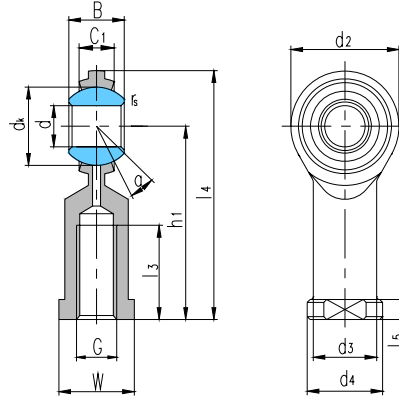
e.g. SILJ12 M12L-6H, SALJ12 M12L-6g.

以上产品的杆端体和内圈可用不锈钢制造，轴承型号后面加“X”标识，即 SIJ.../X。

The rod and inner ring of the bearings is of stainless steel and the mark of the items has a letter “X”. That is SIJ.../X..



杆端关节轴承 Rod ends



滑动摩擦副: 钢 / 钢

Sliding contact surfaces: Steel / Steel

轴承 型号 Bearing number	外形尺寸 Dimensions mm/inch															额定载荷 Load ratings kN		重量 Weight ≈kg
	d	B	d _k	C ₁ max	d ₂	G	h ₁	l ₃ min	l ₄	l ₅	W	d ₃	d ₄	r _s min	α° ≈	动载荷 Dynamic	静载荷 Static	
SIZJ4	4.83	7.92	11.1	5.94	15.88	10-32	26.97	12.70	34.93	4.75	7.92	7.54	10.31	0.3	10	3.6	6.8	0.018
	0.19	0.312	0.437	0.234	0.625		1.062	0.5	1.375	0.187	0.312	0.297	0.406	0.012				
SIZJ6	6.35	9.53	12.7	6.35	19.05	1/4-28	33.32	15.88	42.85	4.75	9.53	9.15	11.91	0.3	13.5	5.4	9.6	0.023
	0.25	0.375	0.5	0.25	0.75		1.312	0.625	1.687	0.187	0.375	0.36	0.469	0.012				
SIZJ7	7.94	11.10	15.88	7.92	22.23	5/16-24	34.93	15.88	46.02	4.75	11.1	10.72	12.70	0.3	11	8.5	12	0.036
	0.3125	0.437	0.625	0.312	0.875		1.375	0.625	1.812	0.187	0.437	0.422	0.5	0.012				
SIZJ9	9.53	12.70	18.26	9.12	25.40	3/8-24	41.28	19.05	53.98	6.35	14.27	13.89	17.45	0.6	11	11	16	0.059
	0.375	0.5	0.719	0.359	1		1.625	0.75	2.125	0.25	0.562	0.547	0.687	0.024				
SIZJ11	11.11	14.27	20.62	10.31	28.58	7/16-20	46.02	22.23	60.33	6.35	15.88	15.49	19.05	0.6	10.5	14	21	0.082
	0.4375	0.562	0.812	0.406	1.125		1.812	0.875	2.375	0.25	0.625	0.61	0.75	0.024				
SIZJ12	12.7	15.88	23.81	11.50	33.32	1/2-20	53.98	25.40	70.64	6.35	19.05	18.67	22.23	0.6	10	18	28	0.132
	0.5	0.625	0.937	0.453	1.312		2.125	1	2.781	0.25	0.75	0.735	0.875	0.024				
SIZJ15	15.88	19.05	28.58	12.29	38.10	5/8-18	63.50	31.75	82.55	7.92	22.23	21.84	25.40	0.6	13	23	29	0.195
	0.625	0.75	1.125	0.484	1.5		2.5	1.25	3.25	0.312	0.875	0.86	1	0.024				
SIZJ19	19.05	22.23	33.32	15.06	44.45	3/4-16	73.03	34.93	95.25	7.92	25.4	25.02	28.58	0.6	12	34	44	0.295
	0.75	0.875	1.312	0.593	1.75		2.875	1.375	3.75	0.312	1	0.985	1.125	0.024				

可提供不同螺纹精度要求的杆端关节轴承。Can supply other rod ends with different accuracy of thread.

可提供滑动摩擦副为钢/ PTFE 复合材料或钢/ PTFE 编织物的杆端关节轴承。Can supply other rod ends with

Sliding contact surfaces Steel / PTFE composite material or Steel / PTFE fabric.

若是左旋螺纹, 轴承型号和螺纹标记需加“L”和“LH”, 例如: SILZJ12 1/2-20-UNF-2BLH.

For left-hand thread, suffix “L” is added to bearings number and suffix “LH” is added to thread sign,

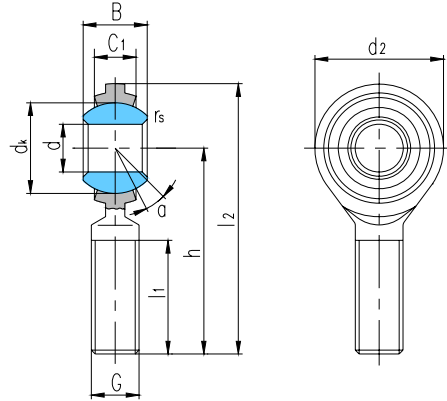
e.g. SILZJ12 1/2-20-UNF -2BLH.

以上产品的杆端体和内圈可用不锈钢制造, 轴承型号后面加“X”标识, 即 SIZJ.../X.

The rod and inner ring of the bearings is of stainless steel and the mark of the items has a letter “X”. That is SIZJ.../X..



杆端关节轴承 Rod ends



滑动摩擦副：钢 / 钢

Sliding contact surfaces: Steel / Steel

轴承 型号 Bearing number	外形尺寸 Dimensions										额定载荷 Load ratings kN		重量 Weight ≈kg	
	d	B	d _k	C ₁ max	d ₂	G	h	l ₁ min	l ₂	r _s min	α° ≈	动载荷 Dynamic		静载荷 Static
SAZJ4	4.83	7.92	11.1	5.94	15.88	10-32	31.75	19.05	39.70	0.3	10	3.6	3.8	0.014
	0.19	0.312	0.437	0.234	0.625		1.25	0.75	1.563	0.012				
SAZJ6	6.35	9.53	12.7	6.35	19.05	1/4-28	39.67	25.40	49.20	0.3	13.5	5.4	6.6	0.018
	0.25	0.375	0.5	0.25	0.75		1.562	1	1.937	0.012				
SAZJ7	7.94	11.10	15.88	7.92	22.23	5/16-24	47.63	31.75	58.72	0.3	11	8.5	12	0.032
	0.3125	0.437	0.625	0.312	0.875		1.875	1.25	2.312	0.012				
SAZJ9	9.53	12.70	18.26	9.12	25.40	3/8-24	49.23	31.75	61.93	0.6	11	11	16	0.050
	0.375	0.5	0.719	0.359	1		1.938	1.25	2.438	0.024				
SAZJ11	11.11	14.27	20.62	10.31	28.58	7/16-20	53.98	34.93	68.28	0.6	10.5	14	21	0.068
	0.4375	0.562	0.812	0.406	1.125		2.125	1.375	2.688	0.024				
SAZJ12	12.7	15.88	23.81	11.50	33.32	1/2-20	61.93	38.10	78.59	0.6	10	18	28	0.11
	0.5	0.625	0.937	0.453	1.312		2.438	1.5	3.094	0.024				
SAZJ15	15.88	19.05	28.58	12.29	38.10	5/8-18	66.68	41.28	85.73	0.6	13	23	29	0.16
	0.625	0.75	1.125	0.484	1.5		2.625	1.625	3.375	0.024				
SAZJ19	19.05	22.23	33.32	15.06	44.45	3/4-16	73.03	44.45	95.25	0.6	12	34	44	0.26
	0.75	0.875	1.312	0.593	1.75		2.875	1.75	3.75	0.024				

可提供不同螺纹精度要求的杆端关节轴承。Can supply other rod ends with different accuracy of thread.

可提供滑动摩擦副为钢/ PTFE 复合材料或钢/ PTFE 编织物的杆端关节轴承。Can supply other rod ends with Sliding contact surfaces Steel / PTFE composite material or Steel / PTFE fabric.

若是左旋螺纹，轴承型号和螺纹标记需加“L”和“LH”，例如：SALZJ12 1/2-20-UNF -2ALH。

For left-hand thread, suffix “L” is added to bearings number and suffix “LH” is added to thread sign,

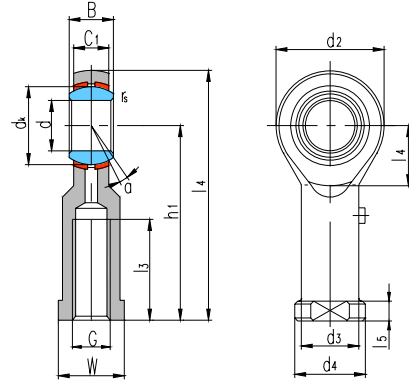
e.g. SALZJ12 1/2-20-UNF -2ALH.

以上产品的杆端体和内圈可用不锈钢制造，轴承型号后面加“X”标识，即 SAZJ.../X。

The rod and inner ring of the bearings is of stainless steel and the mark of the items has a letter “X”. That is SAZJ.../X..



杆端关节轴承 Rod ends



滑动摩擦副：钢 / 青铜

Sliding contact surfaces: Steel / Bronze

轴承 型号 Bearing number	外形尺寸 Dimensions															额定载荷 Load ratings		重量 Weight ≈kg	
	mm															kN			
	d	B	d _K	C ₁ max	d ₂	G 6H	h ₁	l ₃ min	l ₄	l ₅	l ₇	W	d ₃	d ₄	r _s min	α° ≈	动载荷 Dynamic		静载荷 Static
SIBP5S ¹⁾	5	8	11.112	6	16	M5	27	14	35	4	8	9	9	11	0.3	13	3.3	4.1	0.016
SIBP6S ¹⁾	6	9	12.7	6.75	18	M6	30	14	39	5	9	11	10	13	0.3	13	4.3	5.3	0.026
SIBP8S	8	12	15.88	9	22	M8	36	17	47	5	11	14	12.5	16	0.3	14	6.8	8.5	0.044
SIBP10S	10	14	19.05	10.5	26	M10	43	21	56	6.5	13	17	15	19	0.3	14	10	11	0.072
SIBP10S/B1						M10×1.25													
SIBP12S	12	16	22.23	12	30	M12	50	24	65	6.5	15	19	17.5	22	0.3	13	13	14	0.108
SIBP12S/B2						M12×1.25													
SIBP14S	14	19	25.4	13.5	34	M14	57	27	74	8	16	22	20	25	0.3	16	17	20	0.161
SIBP14S/B1						M14×1.5													
SIBP16S	16	21	28.58	15	38	M16	64	33	83	8	17.5	22	22	27	0.3	15	21	25	0.225
SIBP16S/B1						M16×1.5													
SIBP18S	18	23	31.75	16.5	42	M18×1.5	71	36	92	10	19.5	27	25	31	0.6	15	26	30	0.295
SIBP20S	20	25	34.93	18	46	M20×1.5	77	40	100	10	21.5	30	27.5	34	0.6	15	31	35	0.382
SIBP22S	22	28	38.1	20	50	M22×1.5	84	43	109	12	23	32	30	37	0.6	15	38	43	0.488
SIBP25S	25	31	42.86	22	60	M24×2	94	48	124	12	29.5	36	33.5	42	0.6	15	47	65	0.749
SIBP28S	28	35	47.63	25	66	M27×2	103	53	136	12	32.5	41	37	46	0.6	15	59	77	0.949
SIBP30S	30	37	50.8	25	70	M30×2	110	56	145	15	34	41	40	50	0.6	17	63	86	1.13

¹⁾不能润滑。Can not be relubricated.

可提供不同螺距或螺纹精度有特殊要求的杆端关节轴承。Can supply other rod ends with different pitch or accuracy of thread.

若是左旋螺纹，轴承型号和螺纹标记需加“L”和“左”，例如：SILBP20S M20×1.5 左-6H。

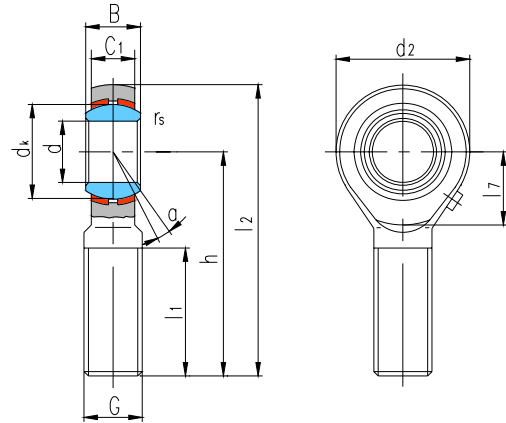
For left-hand thread, suffix “L” is added to bearings number and thread sign, e.g. SILBP20S M20×1.5L-6H.

以上产品的杆端体和内圈可用不锈钢制造，轴承型号后面加“X”标识，即 SIBP...S/X。

The rod and inner ring of the bearings is of stainless steel and the mark of the items has a letter “X”. That is SIBP...S/X..



杆端关节轴承 Rod ends



滑动摩擦副：钢 / 青铜

Sliding contact surfaces: Steel / Bronze

轴承 型号 Bearing number	外形尺寸 Dimensions mm												额定载荷 Load ratings kN		重量 Weight ≈kg
	d	B	dk	C ₁ max	d ₂	G 6g	h	l ₁ min	l ₂	l ₇	r _s min	α° ≈	动载荷 Dynamic	静载荷 Static	
SABP5S ¹⁾	5	8	11.112	6	16	M5	33	20	41	—	0.3	13	3.3	3.9	0.016
SABP6S ¹⁾	6	9	12.7	6.75	18	M6	36	22	45	—	0.3	13	4.3	5.3	0.026
SABP8S	8	12	15.88	9	22	M8	42	25	53	—	0.3	14	6.8	8.5	0.044
SABP10S	10	14	19.05	10.5	26	M10	48	29	61	—	0.3	14	10	11	0.072
SABP12S	12	16	22.23	12	30	M12	54	33	69	—	0.3	13	13	14	0.108
SABP14S	14	19	25.4	13.5	34	M14	60	36	77	—	0.3	16	17	20	0.161
SABP16S	16	21	28.58	15	38	M16	66	40	85	—	0.3	15	21	25	0.225
SABP18S	18	23	31.75	16.5	42	M18×1.5	72	44	93	23	0.6	15	26	30	0.295
SABP20S	20	25	34.93	18	46	M20×1.5	78	47	101	25	0.6	15	31	35	0.382
SABP22S	22	28	38.1	20	50	M22×1.5	84	51	109	27	0.6	15	38	43	0.488
SABP25S	25	31	42.86	22	60	M24×2	94	57	124	29	0.6	15	47	65	0.749
SABP28S	28	35	47.63	25	66	M27×2	103	62	136	33	0.6	15	59	77	0.949
SABP30S	30	37	50.8	25	70	M30×2	110	66	145	39	0.6	17	63	86	1.13

¹⁾不能润滑。Can not be relubricated.

可提供不同螺距或螺纹精度有特殊要求的杆端关节轴承。Can supply other rod ends with different pitch or accuracy of thread.

若是左旋螺纹，轴承型号和螺纹标记需加“L”和“左”，例如：SALBP20S M20×1.5 左-6g。

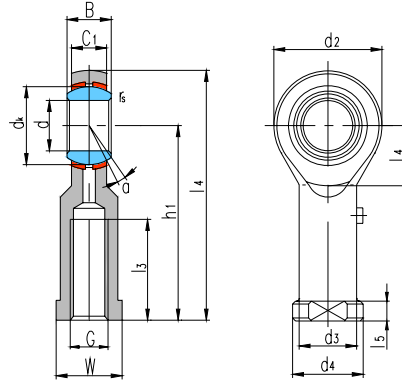
For left-hand thread, suffix “L” is added to bearings number and thread sign, e.g. SALBP20S M20×1.5L-6g.

以上产品的杆端体和内圈可用不锈钢制造，轴承型号后面加“X”标识，即 SABP...S/X。

The rod and inner ring of the bearings is of stainless steel and the mark of the items has a letter “X”. That is SABP...S/X..



杆端关节轴承 Rod ends



滑动摩擦副：钢 / 青铜

Sliding contact surfaces: Steel / Bronze

轴承 型号 Bearing number	外形尺寸 Dimensions mm/inch															额定载荷 Load ratings kN		重量 Weight ≈kg	
	d	B	d _K	C ₁ max	d ₂	G	h ₁	l ₃ min	l ₄	l ₅	l ₇	W	d ₃	d ₄	r _s min	α° ≈	动载荷 Dynamic		静载荷 Static
SIZP4S ¹⁾	4.83	7.92	11.1	6.35	15.88	10-32	26.97	14.27	34.93	4.75	9	7.92	7.54	10.31	0.3	10	3.4	4.6	0.015
	0.19	0.312	0.437	0.25	0.625		1.062	0.562	1.375	0.187	0.354	0.312	0.297	0.406	0.012				
SIZP6S ¹⁾	6.35	9.53	12.7	7.14	19.05	1/4-28	33.32	19.05	42.85	4.75	10.5	9.53	9.15	11.91	0.3	13	4.5	7.7	0.025
	0.25	0.375	0.5	0.281	0.75		1.312	0.75	1.687	0.187	0.413	0.375	0.36	0.469	0.012				
SIZP7S	7.94	11.10	15.88	8.74	22.23	5/16-24	34.93	19.05	46.02	4.75	11.7	11.1	10.72	12.70	0.3	10	6.9	8.4	0.036
	0.3125	0.437	0.625	0.344	0.875		1.375	0.75	1.812	0.187	0.461	0.437	0.422	0.5	0.012				
SIZP9S	9.53	12.70	18.26	10.31	25.40	3/8-24	41.28	23.80	53.98	6.35	12.3	14.27	13.89	17.45	0.6	9	9.4	10	0.061
	0.375	0.5	0.719	0.406	1		1.625	0.937	2.125	0.25	0.484	0.562	0.547	0.687	0.024				
SIZP11S	11.11	14.27	20.62	11.1	28.58	7/16-20	46.02	26.97	60.33	6.35	14	15.88	15.49	19.05	0.6	11	11	13	0.081
	0.4375	0.562	0.812	0.437	1.125		1.812	1.062	2.375	0.25	0.551	0.625	0.61	0.75	0.024				
SIZP12S	12.7	15.88	23.81	12.7	33.32	1/2-20	53.98	30.15	70.64	6.35	16.2	19.05	18.67	22.23	0.6	9	15	19	0.133
	0.5	0.625	0.937	0.5	1.312		2.125	1.187	2.781	0.25	0.638	0.75	0.735	0.875	0.024				
SIZP15S	15.88	19.05	28.58	14.27	38.10	5/8-18	63.50	38.10	82.55	7.92	18.2	22.23	21.84	25.40	0.6	11	20	21	0.190
	0.625	0.75	1.125	0.562	1.5		2.5	1.5	3.25	0.312	0.717	0.875	0.86	1	0.024				
SIZP19S	19.05	22.23	33.32	17.45	44.45	3/4-16	73.03	44.45	95.25	7.92	20.9	25.4	25.02	28.58	0.6	10	29	29	0.285
	0.75	0.875	1.312	0.687	1.75		2.875	1.75	3.75	0.312	0.823	1	0.985	1.125	0.024				
SIZP25S	25.40	34.93	47.63	25.40	69.85	5/4-12	104.78	53.98	139.70	11.10	33.1	38.1	37.72	44.45	0.6	14	60	101	1.00
	1	1.375	1.875	1	2.75		4.125	2.125	5.5	0.437	1.303	1.5	1.485	1.75	0.024				

¹⁾不能润滑。Can not be relubricated.

可提供不同螺纹精度要求的杆端关节轴承。Can supply other rod ends with different accuracy of thread.

若是左旋螺纹，轴承型号和螺纹标记需加“L”和“LH”，例如：SILZP12S 1/2-20-UNF-2BLH。

For left-hand thread, suffix “L” is added to bearings number and suffix “LH” is added to thread sign,

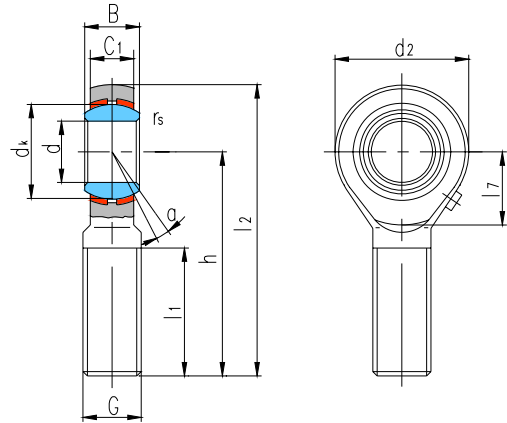
e.g. SILZP12S 1/2-20-UNF-2BLH.

以上产品的杆端体和内圈可用不锈钢制造，轴承型号后面加“X”标识，即 SIZP...S/X。

The rod and inner ring of the bearings is of stainless steel and the mark of the items has a letter “X”. That is SIZP...S/X..



杆端关节轴承 Rod ends



滑动摩擦副：钢 / 青铜

Sliding contact surfaces: Steel / Bronze

轴承 型号 Bearing number	外形尺寸 Dimensions											额定载荷 Load ratings kN		重量 Weight ≈kg	
	d	B	dk	C1 max	d2	G	h	l1 min	l2	l7	rs min	α° ≈	动载荷 Dynamic		静载荷 Static
SAZP4S ¹⁾	4.83	7.92	11.1	6.35	15.88	10-32	31.75	19.05	39.70	—	0.3	10	3.4	3.8	0.013
	0.19	0.312	0.437	0.25	0.625		1.25	0.75	1.563		0.012				
SAZP6S ¹⁾	6.35	9.53	12.7	7.14	19.05	1/4-28	39.67	25.40	49.20	—	0.3	13	4.5	6.6	0.022
	0.25	0.375	0.5	0.281	0.75		1.562	1	1.937		0.012				
SAZP7S	7.94	11.10	15.88	8.74	22.23	5/16-24	47.63	31.75	58.72	—	0.3	10	6.9	8.4	0.037
	0.3125	0.437	0.625	0.344	0.875		1.875	1.25	2.312		0.012				
SAZP9S	9.53	12.70	18.26	10.31	25.40	3/8-24	49.23	31.75	61.93	—	0.6	9	9.4	10	0.055
	0.375	0.5	0.719	0.406	1		1.938	1.25	2.438		0.024				
SAZP11S	11.11	14.27	20.62	11.1	28.58	7/16-20	53.98	34.93	68.28	—	0.6	11	11	13	0.078
	0.4375	0.562	0.812	0.437	1.125		2.125	1.375	2.688		0.024				
SAZP12S	12.7	15.88	23.81	12.7	33.32	1/2-20	61.93	38.10	78.59	—	0.6	9	15	19	0.12
	0.5	0.625	0.937	0.5	1.312		2.438	1.5	3.094		0.024				
SAZP15S	15.88	19.05	28.58	14.27	38.10	5/8-18	66.68	41.28	85.73	18.2	0.6	11	20	21	0.18
	0.625	0.75	1.125	0.562	1.5		2.625	1.625	3.375		0.717				
SAZP19S	19.05	22.23	33.32	17.45	44.45	3/4-16	73.03	44.45	95.25	20.9	0.6	10	29	29	0.29
	0.75	0.875	1.312	0.687	1.75		2.875	1.75	3.75		0.823				
SAZP25S	25.40	34.93	47.63	25.40	69.85	5/4-12	104.78	53.98	139.70	33.9	0.6	14	60	101	1.1
	1	1.375	1.875	1	2.75		4.125	2.125	5.5		1.335				

¹⁾不能润滑。Can not be relubricated.

可提供不同螺纹精度要求的杆端关节轴承。Can supply other rod ends with different accuracy of thread.

若是左旋螺纹，轴承型号和螺纹标记需加“L”和“LH”，例如：SALZP12S 1/2-20-UNF-2ALH。

For left-hand thread, suffix “L” is added to bearings number and suffix “LH” is added to thread sign,

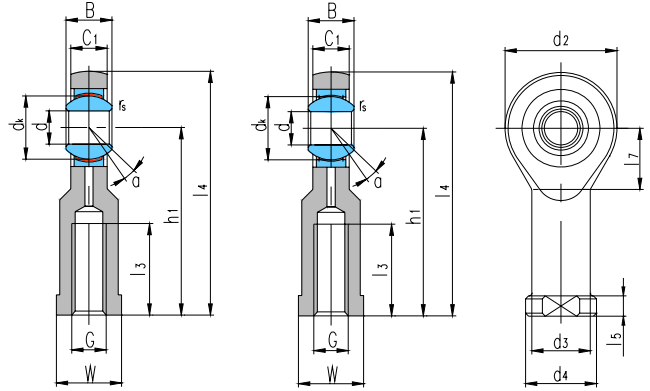
e.g. SALZP12S 1/2-20-UNF-2ALH.

以上产品的杆端体和内圈可用不锈钢制造，轴承型号后面加“X”标识，即SAZP...S/X。

The rod and inner ring of the bearings is of stainless steel and the mark of the items has a letter “X”. That is SAZP...S/X..



杆端关节轴承 Rod ends



滑动摩擦副: 钢 / PTFE 复合材料($d \leq 30$)
钢 / PTFE 编织物 ($d \geq 15$)

SI...C

SI...ET-2RS、

Sliding contact surfaces: Steel / PTFE composite material($d \leq 30$)
Steel / PTFE fabric($d \geq 15$)

轴承 型号 Bearing number	外形尺寸 Dimensions																额定载荷 Load Ratings kN		重量 Weight ≈kg
	d	B	d _k	C ₁ max	d ₂	G 6H	h ₁	l ₃ min	l ₄	l ₅	l ₇	W	d ₃	d ₄	r _s min	α° ≈	动载荷 Dynamic	静载荷 Static	
SI5C	5	6	10	4.5	21	M5	30	11	40.5	5	11.5	10	10	13	0.3	13	3.6	8.1	0.021
SI6C	6	6	10	4.5	21	M6	30	11	40.5	5	11.5	11	11	13	0.3	13	3.6	8.1	0.021
SI8C	8	8	13	6.5	24	M8	36	15	48	5	13	13	13	16	0.3	15	5.8	12.9	0.039
SI10C	10	9	16	7.5	29	M10	43	20	57.5	6.5	15	16	16	19	0.3	12	8.6	17.6	0.065
SI12C	12	10	18	8.5	34	M12	50	23	67	7	18	18	19	22	0.3	10	11	24.5	0.096
SI15C	15	12	22	10.5	40	M14	61	30	81	8	21	21	21	26	0.3	8	18	36	0.16
SI15ET-2RS																	25		
SI17C	17	14	25	11.5	46	M16	67	34	90	10	24	27	25	29	0.3	10	22	45	0.24
SI17ET-2RS																	32		
SI20C	20	16	29	13.5	53	M20×1.5	77	40	103.5	10	25.5	30	28	34	0.3	9	31	60	0.35
SI20ET-2RS																	45		
SI25C	25	20	35.5	18	64	M24×2	94	48	126	12	33	36	35	42	0.6	7	51	83	0.66
SI25ET-2RS																	85		
SI30C	30	22	40.7	20	73	M30×2	110	56	146.5	15	37.5	46	42	50	0.6	6	65	110	0.98
SI30ET-2RS																	110		
SI35ET-2RS	35	25	47	22	82	M36×3	125	60	166	15	40	55	48	58	0.6	6	140	146	1.5
SI40ET-2RS	40	28	53	24	92	M39×3	142	65	188	18	47	60	52	65	0.6	7	175	180	2.1
SI45ET-2RS	45	32	60	28	102	M42×3	145	65	196	20	52	65	58	70	0.6	7	225	240	2.7
SI50ET-2RS	50	35	66	31	112	M45×3	160	68	216	20	57	70	62	75	0.6	6	275	290	3.5
SI60ET-2RS	60	44	80	39	135	M52×3	175	70	242.5	20	68.5	80	70	88	1	6	430	450	5.6
SI70ET-2RS	70	49	92	43	160	M56×4	200	80	280	20	81	85	80	98	1	6	550	610	8.3
SI80ET-2RS	80	55	105	48	180	M64×4	230	85	320	25	91	95	95	110	1	6	705	750	13

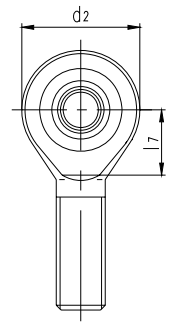
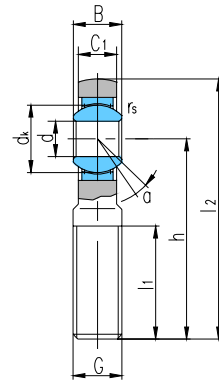
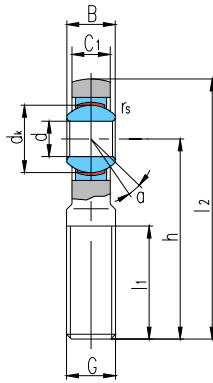
可提供不同螺距或螺纹精度有特殊要求的杆端关节轴承。Can supply other rod ends with different pitch or accuracy of thread.

若是左旋螺纹, 轴承型号和螺纹标记需加“L”和“左”, 例如: SI120C M20×1.5 左-6H。

For left-hand thread, suffix “L” is added to bearings number and thread sign, e.g. SI120C M20×1.5L-6H.



杆端关节轴承 Rod ends



滑动摩擦副: 钢 / PTFE 复合材料($d \leq 30$)
钢 / PTFE 编织物 ($d \geq 15$)

SA...C

SA...ET-2RS

Sliding contact surfaces: Steel / PTFE composite material($d \leq 30$)
Steel / PTFE fabric($d \geq 15$)

轴承 型号 Bearing number	外形尺寸 Dimensions											额定载荷 Load ratings		重量 Weight ≈kg	
	d	B	dk	C ₁ max	d ₂	G 6g	h	l ₁ min	l ₂	l ₇	r _s min	α° ≈	动载荷 Dynamic		静载荷 Static
SA5C	5	6	10	4.5	21	M5	36	16	46.5	11.5	0.3	13	3.6	3.9	0.017
SA6C	6	6	10	4.5	21	M6	36	16	46.5	11.5	0.3	13	3.6	5.5	0.017
SA8C	8	8	13	6.5	24	M8	42	21	54	13	0.3	15	5.8	10	0.029
SA10C	10	9	16	7.5	29	M10	48	26	62.5	15.5	0.3	12	8.6	16	0.050
SA12C	12	10	18	8.5	34	M12	54	28	71	18	0.3	10	11	23	0.066
SA15C	15	12	22	10.5	40	M14	63	34	83	21	0.3	8	18	32	0.12
SA15ET-2RS													25		
SA17C	17	14	25	11.5	46	M16	69	36	92	24	0.3	10	22	44	0.19
SA17ET-2RS													32		
SA20C	20	16	29	13.5	53	M20×1.5	78	43	104.5	25.5	0.3	9	31	60	0.31
SA20ET-2RS													45		
SA25C	25	20	35.5	18	64	M24×2	94	53	126	31	0.6	7	51	83	0.56
SA25ET-2RS													85		
SA30C	30	22	40.7	20	73	M30×2	110	65	146.5	35.5	0.6	6	65	110	0.89
SA30ET-2RS													110		
SA35ET-2RS	35	25	47	22	82	M36×3	140	82	181	41	0.6	6	140	146	1.4
SA40ET-2RS	40	28	53	24	92	M39×3	150	86	196	47	0.6	7	175	180	1.8
SA45ET-2RS	45	32	60	28	102	M42×3	163	92	214	52	0.6	7	225	240	2.5
SA50ET-2RS	50	35	66	31	112	M45×3	185	104	241	60	0.6	6	275	290	3.6
SA60ET-2RS	60	44	80	39	135	M52×3	210	115	277.5	75.5	1.0	6	430	450	5.7
SA70ET-2RS	70	49	92	43	160	M56×4	235	125	315	95	1.0	6	550	610	7.9
SA80ET-2RS	80	55	105	48	180	M64×4	270	140	360	105.5	1.0	6	705	750	12

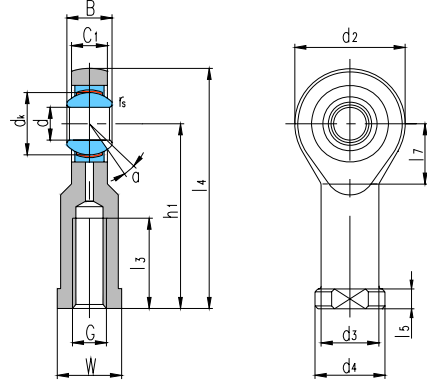
可提供不同螺距或螺纹精度有特殊要求的杆端关节轴承。Can supply other rod ends with different pitch or accuracy of thread.

若是左旋螺纹, 轴承型号和螺纹标记需加“L”和“左”, 例如: SAL20C M20×1.5 左-6g。

For left-hand thread, suffix “L” is added to bearings number and thread sign, e.g. SAL20C M20×1.5L-6g.



杆端关节轴承 Rod ends



滑动摩擦副：钢 / PTFE 复合材料

Sliding contact surfaces: Steel / PTFE composite material

轴承 型号 Bearing number	外形尺寸 Dimensions																额定载荷 Load ratings		重量 Weight ≈kg
	mm																kN		
	d	B	d _K	C ₁ max	d ₂	G 6H	h ₁	l ₃ min	l ₄	l ₅	l ₇	W	d ₃	d ₄	r _s min	α° ≈	动载荷 Dynamic	静载荷 Static	
SIJK5C	5	8	11.112	7.5	18	M5	27	8	36	4	10	10	9	12	0.3	4	3.6	4.6	0.020
SIJK6C	6	9	12.7	7.5	20	M6	30	9	40	5	11	10	10	13	0.3	9	4.7	5.2	0.025
SIJK8C	8	12	15.88	9.5	24	M8	36	12	48	5	13	13	12.5	16	0.3	12	7.6	8.2	0.047
SIJK10C	10	14	19.05	11.5	30	M10	43	15	58	6.5	16	16	15	19	0.3	10	12	15	0.088
SIJK10C/B1						M10×1.25													
SIJK12C	12	16	22.23	12.5	34	M12	50	18	67	6.5	18	18	17.5	22	0.3	12	14	19	0.14
SIJK12C/B2						M12×1.25													
SIJK14C	14	19	25.4	14.5	38	M14	57	21	76	8	20	21	20	25	0.3	14	19	24	0.20
SIJK14C/B1						M14×1.5													
SIJK16C	16	21	28.58	15.5	42	M16	64	24	85	8	21	24	22	27	0.3	14	23	29	0.25
SIJK16C/B1						M16×1.5													
SIJK18C	18	23	31.75	17.5	46	M18×1.5	71	27	94	10	22.5	27	25	31	0.6	13	29	34	0.35
SIJK20C	20	25	34.93	18.5	50	M20×1.5	77	30	102	10	25	30	27.5	34	0.6	14	34	40	0.43
SIJK22C	22	28	38.1	21	56	M22×1.5	84	33	112	12	27.5	34	30	37	0.6	14	42	50	0.61
SIJK25C	25	31	42.86	23	60	M24×2	94	36	124	12	28.5	36	33.5	42	0.6	14	52	57	0.81
SIJK28C	28	35	47.63	26	66	M27×2	103	41	136	14	31.5	41	37	46	0.6	14	66	69	1.2
SIJK30C	30	37	50.8	27	70	M30×2	110	45	145	15	33	46	40	50	0.6	15	73	77	1.4

可提供不同螺距或螺纹精度有特殊要求的杆端关节轴承。Can supply other rod ends with different pitch or accuracy of thread.

若是左旋螺纹，轴承型号和螺纹标记需加“L”和“左”，例如：SILJK20C M20×1.5 左-6H。

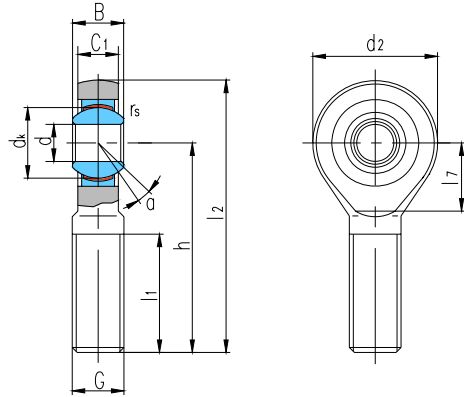
For left-hand thread, suffix “L” is added to bearings number and thread sign, e.g. SILJK20C M20×1.5L-6H.

以上产品的杆端体和内圈可用不锈钢制造，轴承型号后面加“X”标识，即 SIJK...C/X。

The rod and inner ring of the bearings is of stainless steel and the mark of the items has a letter “X”. That is SIJK...C/X..



杆端关节轴承 Rod ends



滑动摩擦副：钢 / PTFE 复合材料

Sliding contact surfaces: Steel / PTFE composite material

轴承 型号 Bearing number	外形尺寸 Dimensions												额定载荷 Load ratings		重量 Weight ≈kg
	d	B	d _k	C ₁ max	d ₂	G 6g	h	l ₁ min	l ₂	l ₇	r _s min	α° ≈	动载荷 Dynamic	静载荷 Static	
SAJK5C	5	8	11.112	7.5	18	M5	33	19	42	—	0.3	4	3.6	3.9	0.013
SAJK6C	6	9	12.7	7.5	20	M6	36	21	46	—	0.3	9	4.7	5.2	0.020
SAJK8C	8	12	15.88	9.5	24	M8	42	25	54	—	0.3	12	7.6	8.2	0.038
SAJK10C	10	14	19.05	11.5	30	M10	48	28	63	—	0.3	10	12	15	0.071
SAJK12C	12	16	22.23	12.5	34	M12	54	32	71	—	0.3	12	14	19	0.12
SAJK14C	14	19	25.4	14.5	38	M14	60	36	79	—	0.3	14	19	24	0.17
SAJK16C	16	21	28.58	15.5	42	M16	66	37	87	—	0.3	14	23	29	0.23
SAJK18C	18	23	31.75	17.5	46	M18×1.5	72	41	95	—	0.6	13	29	34	0.31
SAJK20C	20	25	34.93	18.5	50	M20×1.5	78	45	103	27.5	0.6	14	34	40	0.40
SAJK22C	22	28	38.1	21	56	M22×1.5	84	48	112	30.5	0.6	14	42	50	0.49
SAJK25C	25	31	42.86	23	60	M24×2	94	55	124	33	0.6	14	52	57	0.65
SAJK28C	28	35	47.63	26	66	M27×2	103	62	136	33	0.6	14	66	69	0.87
SAJK30C	30	37	50.8	27	70	M30×2	110	66	145	36	0.6	15	73	77	1.1

可提供不同螺距或螺纹精度有特殊要求的杆端关节轴承。Can supply other rod ends with different pitch or accuracy of thread.

若是左旋螺纹，轴承型号和螺纹标记需加“L”和“左”，例如：SALJK20C M20×1.5 左-6g。

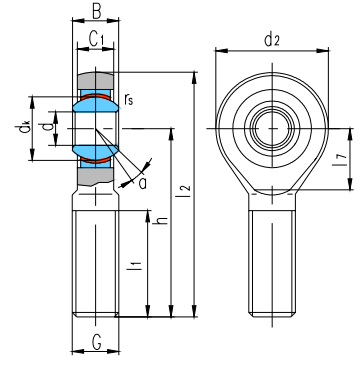
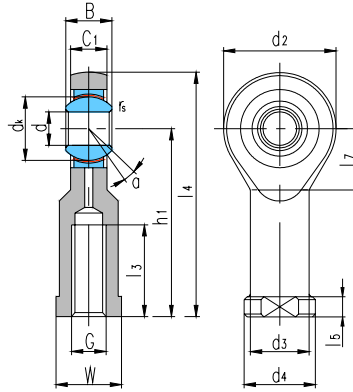
For left-hand thread, suffix “L” is added to bearings number and thread sign, e.g. SALJK20C M20×1.5L-6g.

以上产品的杆端体和内圈可用不锈钢制造，轴承型号后面加“X”标识，即 SAJK...C/X。

The rod and inner ring of the bearings is of stainless steel and the mark of the items has a letter “X”. That is SAJK...C/X..



杆端关节轴承 Rod ends



滑动摩擦副：钢 / PTFE 复合材料

SIK...C

SAK...C

Sliding contact surfaces: Steel / PTFE composite material

轴承 型号 Bearing number	外形尺寸 Dimensions mm														额定载荷 Load ratings kN		重量 Weight ≈kg		
	d	B	dk	C1 max	d2	G 6H	h1	l3 min	l4	l5	l7	W	d3	d4	r _s min	α° ≈		动载荷 Dynamic	静载荷 Static
SIK5C	5	8	11.112	6	19.5	M5	30	12	39.8	5	9.5	10	10	13	0.3	4	3.6	4.6	0.024
SIK6C	6	9	12.7	7.5	21.2	M6	30	9	40.7	5	11	10	10	13	0.3	9	4.7	5.2	0.028
SIK8C	8	12	15.88	9.5	25.5	M8	36	12	48.8	5	13	13	12.5	16	0.3	12	7.6	8.2	0.053
SIK10C	10	14	19.05	11.5	31	M10	43	19	58.6	6.5	16	16	15	19	0.3	10	12	15	0.11
SIK12C	12	16	22.23	12.5	34	M12	50	23	67	6.5	18	18	17.5	22	0.3	12	14	19	0.14
SIK14C	14	19	25.4	14.5	38	M14	57	23	76	8	20	21	20	25	0.3	14	19	24	0.20
SIK16C	16	21	28.58	15.5	42	M16	64	24	85	8	21	24	22	27	0.3	14	23	29	0.25
SIK18C	18	23	31.75	17.5	46	M18×1.5	71	27	94	10	22.5	27	25	31	0.6	13	29	34	0.35
SIK20C	20	25	34.93	18.5	50	M20×1.5	77	30	102	10	25	30	27.5	34	0.6	14	34	40	0.43

轴承 型号 Bearing number	外形尺寸 Dimensions mm												额定载荷 Load ratings kN		重量 Weight ≈kg
	d	B	dk	C1 max	d2	G 6g	h	l1 min	l2	l7	r _s min	α° ≈	动载荷 Dynamic	静载荷 Static	
SAK5C	5	8	11.112	6	19.5	M5	33	19	42.8	—	0.3	4	3.6	3.9	0.017
SAK6C	6	9	12.7	7.5	21.2	M6	36	21	46.7	—	0.3	9	4.7	5.2	0.023
SAK8C	8	12	15.88	9.5	25.5	M8	42	25	54.8	—	0.3	12	7.6	8.2	0.047
SAK10C	10	14	19.05	11.5	31	M10	48	28	63.6	—	0.3	10	12	15	0.085
SAK12C	12	16	22.23	12.5	34	M12	54	32	71	—	0.3	12	14	19	0.12
SAK14C	14	19	25.4	14.5	38	M14	60	36	79	—	0.3	14	19	24	0.17
SAK16C	16	21	28.58	15.5	42	M16	66	37	87	—	0.3	14	23	29	0.23
SAK18C	18	23	31.75	17.5	46	M18×1.5	72	41	95	—	0.6	13	29	34	0.31
SAK20C	20	25	34.93	18.5	50	M20×1.5	78	45	103	27.5	0.6	14	34	40	0.40

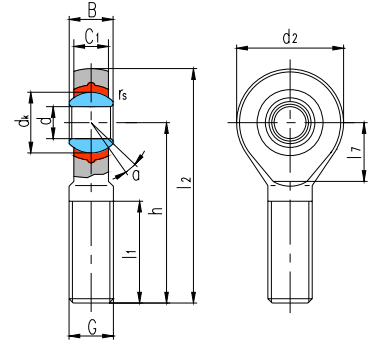
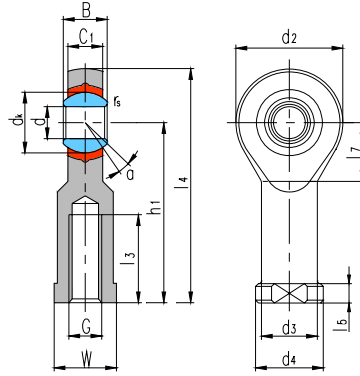
可提供不同螺距或螺纹精度有特殊要求的杆端关节轴承。Can supply other rod ends with different pitch or accuracy of thread.

若是左旋螺纹，轴承型号和螺纹标记需加“L”和“左”，例如：SILK20C M20×1.5 左-6H，SALK20C M20×1.5 左-6g。

For left-hand thread, suffix “L” is added to bearings number and thread sign, e.g. SILK20C M20×1.5L-6H, SALK20C M20×1.5 左-6g



杆端关节轴承 Rod ends



滑动摩擦副：钢 / PTFE 塑料

SIBP...N

SABP...N

Sliding contact surfaces: Steel / PTFE plastic

轴承 型号 Bearing number	外形尺寸 Dimensions																额定载荷 Load ratings		重量 Weight ≈kg
	mm																kN		
	d	B	dk	C1 max	d2	G 6H	h1	l3 min	l4	l5	l7	W	d3	d4	rs min	α° ≈	动载荷 Dynamic	静载荷 Static	
SIBP5N	5	8	11.112	6	16	M5	27	14	35	4	8	9	9	11	0.3	13	3.25	5.3	0.016
SIBP6N	6	9	12.7	6.75	18	M6	30	14	39	5	9	11	10	13	0.3	13	4.25	6.8	0.026
SIBP8N	8	12	15.88	9	22	M8	36	17	47	5	11	14	12.5	16	0.3	14	7.1	11.4	0.044
SIBP10N	10	14	19.05	10.5	26	M10	43	21	56	6.5	13	17	15	19	0.3	14	9.8	14.3	0.072
SIBP12N	12	16	22.23	12	30	M12	50	24	65	6.5	15	19	17.5	22	0.3	13	13.2	17	0.108
SIBP14N	14	19	25.4	13.5	34	M14	57	27	74	8	16	22	20	25	0.3	16	17	27.5	0.161
SIBP16N	16	21	28.58	15	38	M16	64	33	83	8	17.5	22	22	27	0.3	15	21.4	34.5	0.225
SIBP18N	18	23	31.75	16.5	42	M18×1.5	71	36	92	10	19.5	27	25	31	0.6	15	26	41.5	0.295
SIBP20N	20	25	34.93	18	46	M20×1.5	77	40	100	10	21.5	30	27.5	34	0.6	15	31	50	0.382

轴承 型号 Bearing number	外形尺寸 Dimensions												额定载荷 Load ratings		重量 Weight ≈kg
	mm												kN		
	d	B	dk	C1 max	d2	G 6g	h	l1 min	l2	l7	rs min	α° ≈	动载荷 Dynamic	静载荷 Static	
SABP5N	5	8	11.112	6	16	M5	33	20	41	—	0.3	13	3.25	5.3	0.016
SABP6N	6	9	12.7	6.75	18	M6	36	22	45	—	0.3	13	4.25	6.8	0.026
SABP8N	8	12	15.88	9	22	M8	42	25	53	—	0.3	14	7.1	10	0.044
SABP10N	10	14	19.05	10.5	26	M10	48	29	61	—	0.3	14	9.8	12.5	0.072
SABP12N	12	16	22.23	12	30	M12	54	33	69	—	0.3	13	13.2	15	0.108
SABP14N	14	19	25.4	13.5	34	M14	60	36	77	—	0.3	16	17	25.5	0.161
SABP16N	16	21	28.58	15	38	M16	66	40	85	—	0.3	15	21.4	34.5	0.225
SABP18N	18	23	31.75	16.5	42	M18×1.5	72	44	93	23	0.6	15	26	41.5	0.295
SABP20N	20	25	34.93	18	46	M20×1.5	78	47	101	25	0.6	15	31	50	0.382

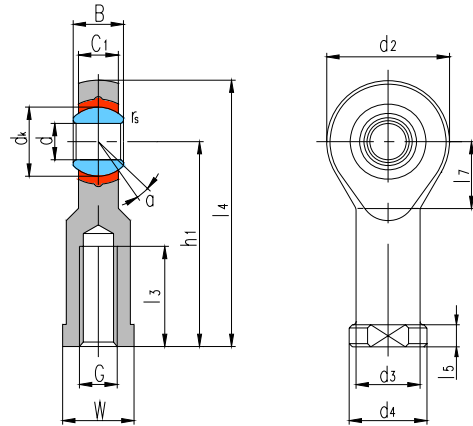
可提供不同螺距或螺纹精度有特殊要求的杆端关节轴承。Can supply other rod ends with different pitch or accuracy of thread.

若是左旋螺纹，轴承型号和螺纹标记需加“L”和“左”，例如：SILBP20N M20×1.5 左-6H，SALBP20N M20×1.5 左-6g。

For left-hand thread, suffix “L” is added to bearings number and thread sign, e.g. SILBP20N M20×1.5L-6H, SALBP20N M20×1.5L-6g.



杆端关节轴承 Rod ends



滑动摩擦副：钢 / PTFE 塑料

Sliding contact surfaces: Steel / PTFE plastic

轴承 型号 Bearing number	外形尺寸 Dimensions mm/inch															额定载荷 Load ratings kN		重量 Weight ≈kg	
	d	B	d _K	C ₁ max	d ₂	G	h ₁	l ₃ min	l ₄	l ₅	l ₇	W	d ₃	d ₄	r _s min	α° ≈	动载荷 Dynamic		静载荷 Static
SIZP4N	4.83	7.92	11.1	6.35	15.88	10-32	26.97	14.27	34.93	4.75	9	7.92	7.54	10.31	0.3	10	3.3	5.38	0.015
	0.19	0.312	0.437	0.25	0.625		1.062	0.562	1.375	0.187	0.354	0.312	0.297	0.406	0.012				
SIZP6N	6.35	9.53	12.7	7.14	19.05	1/4-28	33.32	19.05	42.85	4.75	10.5	9.53	9.15	11.91	0.3	13	6.8	10.9	0.025
	0.25	0.375	0.5	0.281	0.75		1.312	0.75	1.687	0.187	0.413	0.375	0.36	0.469	0.012				
SIZP7N	7.94	11.10	15.88	8.74	22.23	5/16-24	34.93	19.05	46.02	4.75	11.7	11.1	10.72	12.70	0.3	10	7.6	12.2	0.036
	0.3125	0.437	0.625	0.344	0.875		1.375	0.75	1.812	0.187	0.461	0.437	0.422	0.5	0.012				
SIZP9N	9.53	12.70	18.26	10.31	25.40	3/8-24	41.28	23.80	53.98	6.35	12.3	14.27	13.89	17.45	0.6	9	11.9	18.2	0.061
	0.375	0.5	0.719	0.406	1		1.625	0.937	2.125	0.25	0.484	0.562	0.547	0.687	0.024				
SIZP11N	11.11	14.27	20.62	11.1	28.58	7/16-20	46.02	26.97	60.33	6.35	14	15.88	15.49	19.05	0.6	11	17.4	23.8	0.081
	0.4375	0.562	0.812	0.437	1.125		1.812	1.062	2.375	0.25	0.551	0.625	0.61	0.75	0.024				
SIZP12N	12.7	15.88	23.81	12.7	33.32	1/2-20	53.98	30.15	70.64	6.35	16.2	19.05	18.67	22.23	0.6	9	19.9	28.6	0.133
	0.5	0.625	0.937	0.5	1.312		2.125	1.187	2.781	0.25	0.638	0.75	0.735	0.875	0.024				
SIZP15N	15.88	19.05	28.58	14.27	38.10	5/8-18	63.50	38.10	82.55	7.92	18.2	22.23	21.84	25.40	0.6	11	22.9	36.9	0.190
	0.625	0.75	1.125	0.562	1.5		2.5	1.5	3.25	0.312	0.717	0.875	0.86	1	0.024				
SIZP19N	19.05	22.23	33.32	17.45	44.45	3/4-16	73.03	44.45	95.25	7.92	20.9	25.4	25.02	28.58	0.6	10	30.2	48.5	0.285
	0.75	0.875	1.312	0.687	1.75		2.875	1.75	3.75	0.312	0.823	1	0.985	1.125	0.024				

可提供不同螺纹精度要求的杆端关节轴承。Can supply other rod ends with different accuracy of thread.

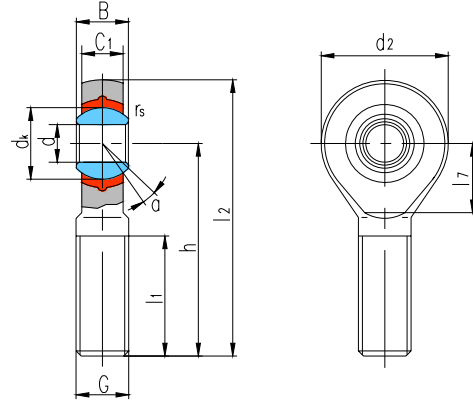
若是左旋螺纹，轴承型号和螺纹标记需加“L”和“LH”，例如：SILZP12N 1/2-20-2BLH。

For left-hand thread, suffix “L” is added to bearings number and suffix “LH” is added to thread sign,

e.g. SILZP12N 1/2-20-2BLH.



杆端关节轴承 Rod ends



滑动摩擦副：钢 / PTFE 塑料

Sliding contact surfaces: Steel / PTFE plastic

轴承 型号 Bearing number	外形尺寸 Dimensions mm/inch											额定载荷 Load ratings kN		重量 Weight ≈kg	
	d	B	dk	C ₁ max	d ₂	G	h	l ₁ min	l ₂	l ₇	r _s min	α° ≈	动载荷 Dynamic		静载荷 Static
SAZP4N	4.83	7.92	11.1	6.35	15.88	10-32	31.75	19.05	39.70	—	0.3	10	3.3	5.38	0.013
	0.19	0.312	0.437	0.25	0.625		1.25	0.75	1.563		0.012				
SAZP6N	6.35	9.53	12.7	7.14	19.05	1/4-28	39.67	25.40	49.20	—	0.3	13	6.8	10.9	0.022
	0.25	0.375	0.5	0.281	0.75		1.562	1	1.937		0.012				
SAZP7N	7.94	11.10	15.88	8.74	22.23	5/16-24	47.63	31.75	58.72	—	0.3	10	7.6	12.2	0.037
	0.3125	0.437	0.625	0.344	0.875		1.875	1.25	2.312		0.012				
SAZP9N	9.53	12.70	18.26	10.31	25.40	3/8-24	49.23	31.75	61.93	—	0.6	9	11.9	18.7	0.055
	0.375	0.5	0.719	0.406	1		1.938	1.25	2.438		0.024				
SAZP11N	11.11	14.27	20.62	11.1	28.58	7/16-20	53.98	34.93	68.28	—	0.6	11	17.4	23.8	0.078
	0.4375	0.562	0.812	0.437	1.125		2.125	1.375	2.688		0.024				
SAZP12N	12.7	15.88	23.81	12.7	33.32	1/2-20	61.93	38.10	78.59	—	0.6	9	19.9	28.6	0.12
	0.5	0.625	0.937	0.5	1.312		2.438	1.5	3.094		0.024				
SAZP15N	15.88	19.05	28.58	14.27	38.10	5/8-18	66.68	41.28	85.73	18.2	0.6	11	22.9	36.9	0.18
	0.625	0.75	1.125	0.562	1.5		2.625	1.625	3.375		0.717				
SAZP19N	19.05	22.23	33.32	17.45	44.45	3/4-16	73.03	44.45	95.25	20.9	0.6	10	30.2	48.5	0.29
	0.75	0.875	1.312	0.687	1.75		2.875	1.75	3.75		0.823				

可提供不同螺纹精度要求的杆端关节轴承。Can supply other rod ends with different accuracy of thread.

若是左旋螺纹，轴承型号和螺纹标记需加“L”和“LH”，例如：SALZP12N 1/2-20-2ALH。

For left-hand thread, suffix “L” is added to bearings number and suffix “LH” is added to thread sign,

e.g. SALZP12N 1/2-20-2ALH.