

LDK[®] Thermoplastic housings

LDK[®] Thermoplastic housings are specially designed to meet particular engineering demand for food, beverage photo, and the chemical industries. The maintenance and the corrosion resistance characteristics as well as a low weight element has proven to stand the hard working conditions for all needed applications.

LDK[®] Thermoplastic housing can be delivered with Chrome steel bearing inserts black oxidized inserts or stainless steel inserts for maximum corrosion resistance.

LDK[®] Thermoplastic housing are designed to meet important engineering demand for:

- Frequent washdowns
- Corrosion resistance
- Exposure to harsh chemicals
- Exposure to high humidity
- Regreasable fittings
- Operating temperature -35°C to 102°C



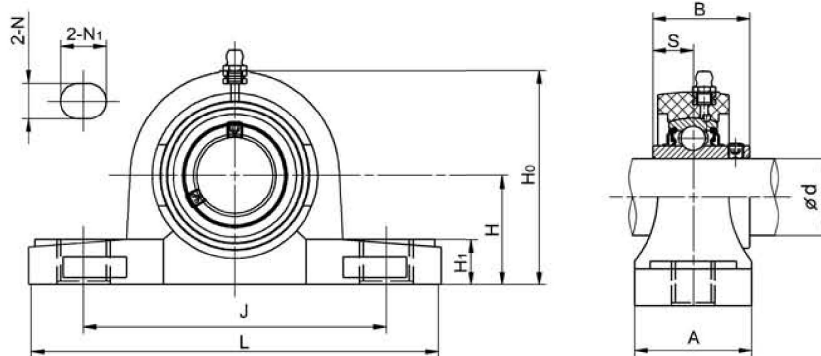
LDK[®] thermoplastic housings can be delivered with food approved grease to any specification. Please contact your local distributor for your grease specification requirement.

Because of their corrosion-resistant and **non-magnetic** properties.

LDK[®] thermoplastic housings are used in a wide variety of industries:

- Food processing
- Canning
- Bottling
- Pharmacy industry
- Chemical processing
- Photo industry

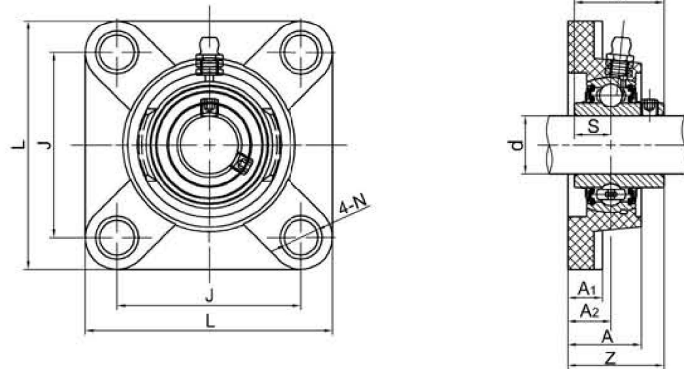




TP-SUCP200 Series

Unit No.	Shaft Dia		Dimensions(mm)										Bolt Size (mm)	Weight (kg)
	d		H	L	J	A	N	N ₁	H ₁	H ₀	B	S		
	(in)	(mm)												
TP-SUCP201 201-8	1/2	12	33.3	127	95	38	11	14	15	65.5	31	12.7	M10	0.29
TP-SUCP202 202-9 202-10	9/16 5/8	15	33.3	127	95	38	11	14	15	65.5	31	12.7	M10	0.29
TP-SUCP203 203-11	11/16	17	33.3	127	95	38	11	14	15	65.5	31	12.7	M10	0.29
TP-SUCP204 204-12	3/4	20	33.3	127	95	38	11	14	15	65.5	31	12.7	M10	0.29
TP-SUCP205 205-14 205-15 205-16	7/8 15/16 1	25	36.5	140	105	38	11	14	16	71	34.1	14.3	M10	0.32
TP-SUCP206 206-17 206-18 206-19 206-20	1-1/16 1-1/8 1-3/16 1-1/4	30	42.9	164	120	46	14	18	18	84	38.1	15.9	M12	0.58
TP-SUCP207 207-20 207-21 207-22 207-23	1-1/4 1-5/16 1-3/8 1-7/16	35	47.6	168	127	48	14	18	18	94.5	42.9	17.5	M12	0.76
TP-SUCP208 208-24 208-25	1-1/2 1-9/16	40	49.2	184	137	54	14	18	19.5	99	42.9	19	M12	0.97
TP-SUCP209 209-26 209-27 209-28	1-5/8 1-11/16 1-3/4	45	54	192	146	54	17	20	23	106	42.9	19	M16	1.08
TP-SUCP210 210-30 210-31 210-32	1-7/8 1-15/16 2	50	57.2	204	159	60	17	20	24	114	51.6	19	M16	1.24
TP-SUCP211 211-32 211-34 211-35	2 2-1/8 2-3/16	55	63.5	217	172	60	17	20	22	124	55.6	22.2	M16	1.6
TP-SUCP212 212-36 212-38 212-39	2-1/4 2-3/8 2-7/16	60	69.9	238	186	66	17	24	24	125	65.1	25.4	M16	2.4

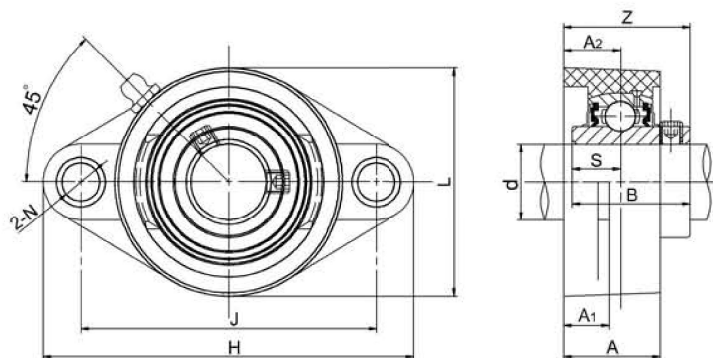
MODE OF LOAD	BREAKING POINT OF HOUSINGS(N)									
	204	205	206	207	208	209	210	211	212	
	8800	13700	12650	12750	13100	13360	13850	14450	20130	
	7700	10000	10600	12750	11100	11400	11750	12450	13110	
	5000	5100	5750	7500	8500	8950	9550	10150	10700	



TP-SUCF200 Series

Unit No.	Shaft Dia		Dimensions(mm)									Bolt Size (mm)	Weight (kg)
	d		L	J	A ₂	A ₁	A	N	B	S	Z		
	(in)	(mm)											
TP-SUCF201 201-8	1/2	12	86	63.5	18	13.4	27.8	11	31	12.7	36.3	M10	0.29
TP-SUCF202 202-9 202-10	9/16 5/8	15	86	63.5	18	13.4	27.8	11	31	12.7	36.3	M10	0.29
TP-SUCF203 203-11	11/16	17	86	63.5	18	13.4	27.8	11	31	12.7	36.3	M10	0.29
TP-SUCF204 204-12	3/4	20	86	63.5	18	13.4	27.8	11	31	12.7	36.3	M10	0.29
TP-SUCF205 205-14 205-15 205-16	7/8 15/16 1	25	95	70	17	14	28	11	34.1	14.3	36.7	M10	0.32
TP-SUCF206 206-17 206-18 206-19 206-20	1-1/16 1-1/8 1-3/16 1-1/4	30	108	83	19.2	14.3	31.5	11	38.1	15.9	41.4	M10	0.54
TP-SUCF207 207-20 207-21 207-22 207-23	1-1/4 1-5/16 1-3/8 1-7/16	35	118	92	21.5	15.5	34.8	13	42.9	17.5	46.9	M12	0.75
TP-SUCF208 208-24 208-25	1-1/2 1-9/16	40	130	102	23	18	37.5	14	49.2	19	53.2	M12	0.99
TP-SUCF209 209-26 209-27 209-28	1-5/8 1-11/16 1-3/4	45	137	105	24	19	41	17	49.2	19	54.2	M16	1.12
TP-SUCF210 210-30 210-31 210-32	1-7/8 1-15/16 2	50	143	111	25	21	43	17	51.6	19	57.6	M16	1.24
TP-SUCF211 211-32 211-34 211-35	2 2-1/8 2-3/16	55	162	130	25	20	43	17	55.6	22.2	58.4	M16	1.58
TP-SUCF212 212-36 212-38 212-39	2-1/4 2-3/8 2-7/16	60	175	143	29	19	48	17	65.1	25.4	68.7	M16	2.1

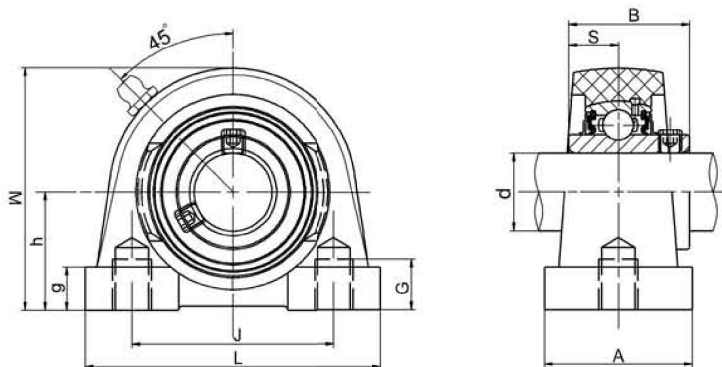
MODE OF LOAD	BREAKING POINT OF HOUSINGS(N)								
	204	205	206	207	208	209	210	210	210
	15950	16000	18000	18500	19100	19350	19650	21550	22600
	10250	12150	17700	18500	19250	19350	19650	21500	21900
	4670	6596	8059	7910	8520	9010	9600	9700	9800



TP-SUCFL200 Series

Unit No.	Shaft Dia		Dimensions(mm)										Bolt Size (mm)	Weight (kg)
	d		H	J	A ₂	A ₁	A	N	L	B	S	Z		
	(in)	(mm)												
TP-SUCFL201 201-8	1/2	12	114	90	16	14	26.5	11	65	31	12.7	33.7	M10	0.25
TP-SUCFL202 202-9 202-10	9/16 5/8	15	114	90	16	14	26.5	11	65	31	12.7	33.7	M10	0.25
TP-SUCFL203 203-11	11/16	17	114	90	16	14	26.5	11	65	31	12.7	33.7	M10	0.25
TP-SUCFL204 204-12	3/4	20	114	90	16	14	26.5	11	65	31	12.7	33.7	M10	0.25
TP-SUCFL205 205-14 205-15 205-16	7/8 15/16 1	25	131	99	17	14	29	11	69	34.1	14.3	36.7	M10	0.32
TP-SUCFL206 206-17 206-18 206-19 206-20	1-1/16 1-1/8 1-3/16 1-1/4	30	148	117	19	14	31	11	80	38.1	15.9	41.2	M10	0.5
TP-SUCFL207 207-20 207-21 207-22 207-23	1-1/4 1-5/16 1-3/8 1-7/16	35	166	130	18	16	32	13	92	42.9	17.5	43.4	M12	0.7
TP-SUCFL208 208-24 208-25	1-1/2 1-9/16	40	176	144	21.5	20	37.5	14	101	49.2	19	51.7	M12	0.89
TP-SUCFL209 209-26 209-27 209-28	1-5/8 1-11/16 1-3/4	45	189	148.5	24	21	41	17	108	49.2	19	54.2	M16	1.01
TP-SUCFL210 210-30 210-31 210-32	1-7/8 1-15/16 2	50	197	157	25	21	43	17	116	51.6	19	57.6	M16	1.13
TP-SUCFL211 211-32 211-34 211-35	2 2-1/8 2-3/16	55	224	184	25	20	43	17	130	55.6	22.2	58.1	M16	1.5
TP-SUCFL212 212-36 212-38 212-39	2-1/4 2-3/8 2-7/16	60	250	202	29	20	48	17	140	65.1	25.4	68.7	M16	2.1

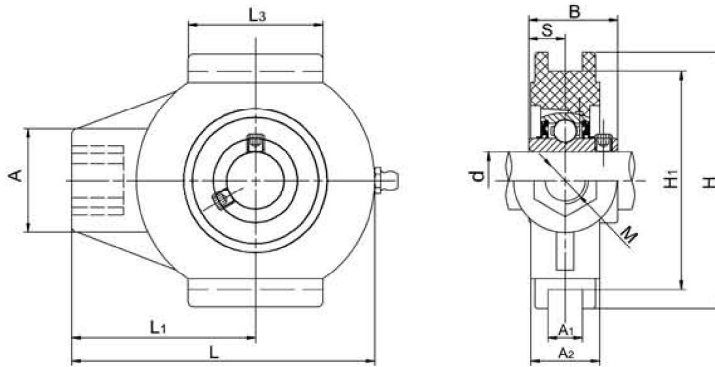
MODE OF LOAD	BREAKING POINT OF HOUSINGS(N)									
	204	205	206	207	208	209	210	211	212	
	10872	12554	18224	16900	17213	17600	17950	18300	18700	
	10590	15093	16826	14900	15150	15350	15650	15900	16250	
	6584	5314	5633	6000	6510	6940	7590	8250	8950	



TP-SUCPA200 Series

Unit No.	Shaft Dia		Dimensions(mm)							Bolt Size (mm)	Weight (kg)
	d		H	L	J	A	H ₀	B	S		
	(in)	(mm)									
TP-SUCPA201 201-8	1/2	12	33.3	76	52	38	64	31	12.7	M8	0.26
TP-SUCPA202 202-9 202-10	9/16 5/8	15	33.3	76	52	38	64	31	12.7	M8	0.26
TP-SUCPA203 203-11	11/16	17	33.3	76	52	38	64	31	12.7	M8	0.26
TP-SUCPA204 204-12	3/4	20	33.3	76	52	38	64	31	12.7	M8	0.26
TP-SUCPA205 205-14 205-15 205-16	7/8 15/16 1	25	36.5	84	56	38	72	34.1	14.3	M10	0.32
TP-SUCPA206 206-17 206-18 206-19 206-20	1-1/16 1-1/8 1-3/16 1-1/4	30	42.9	95	66	48	84	38.1	15.9	M10	0.53
TP-SUCPA207 207-20 207-21 207-22 207-23	1-1/4 1-5/16 1-3/8 1-7/16	35	47.6	110	80	48	95	42.9	17.5	M10	0.73
TP-SUCPA208 208-24 208-25	1-1/2 1-9/16	40	49.2	116	84	54	100	49.2	19	M12	0.93
TP-SUCPA209 209-26 209-27 209-28	1-5/8 1-11/16 1-3/4	45	54.2	120	90	54	108	49.2	19	M12	1.06
TP-SUCPA210 210-30 210-31 210-32	1-7/8 1-15/16 2	50	57.2	130	94	60	116	51.6	19	M16	1.25

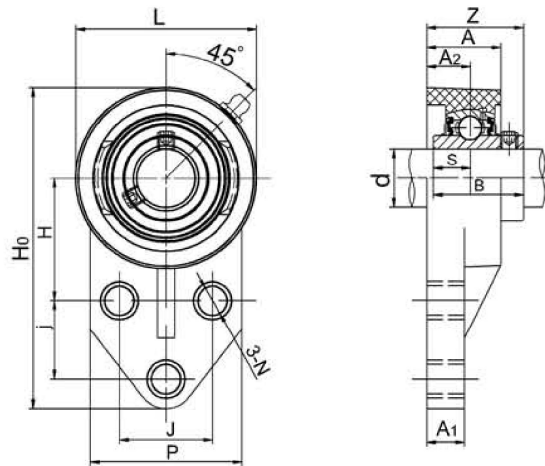
MODE OF LOAD	BREAKING POINT OF HOUSINGS(N)						
	204	205	206	207	208	209	210
	8210	8540	10370	12150	12230	12900	13850
	6900	7010	6580	8080	9100	10400	11050
	2980	2850	4950	8160	9800	10710	11360



TP-SUCT200 Series

Unit No.	Shaft Dia		Dimensions(mm)											Weight (kg)
	d		L	A ₂	A ₁	L ₁	H	H ₁	M	A	L ₃	B	S	
	(in)	(mm)												
TP-SUCT201 201-8	1/2	12	99	27.5	12	64	88	76	M16	36	47	31	12.7	0.33
TP-SUCT202 202-9 202-10	9/16 5/8	15	99	27.5	12	64	88	76	M16	36	47	31	12.7	0.33
TP-SUCT203 203-11	11/16	17	99	27.5	12	64	88	76	M16	36	47	31	12.7	0.33
TP-SUCT204 204-12	3/4	20	99	27.5	12	64	88	76	M16	36	47	31	12.7	0.33
TP-SUCT205 205-14 205-15 205-16	7/8 15/16 1	25	99	27.5	12	64	88	74	M16	36	47	34.1	14.3	0.34
TP-SUCT206 206-17 206-18 206-19 206-20	1-1/16 1-1/8 1-3/16 1-1/4	30	125	34.5	12	76	101.4	89	M16	40	63	38.1	15.9	0.62
TP-SUCT207 207-20 207-21 207-22 207-23	1-1/4 1-5/16 1-3/8 1-7/16	35	125	34.5	12	76	101.4	89	M16	40	63	42.9	17.5	0.73
TP-SUCT208 208-24 208-25	1-1/2 1-9/16	40	140	34.5	16	85	113.6	100	M16	40	80	49.2	19	0.96
TP-SUCT209 209-26 209-27 209-28	1-5/8 1-11/16 1-3/4	45	149	40	16	90	116	100	M20	50	85	49.2	19	1.14
TP-SUCT210 210-30 210-31 210-32	1-7/8 1-15/16 2	50	149	40	16	90	116	100	M20	50	85	51.6	19	1.17

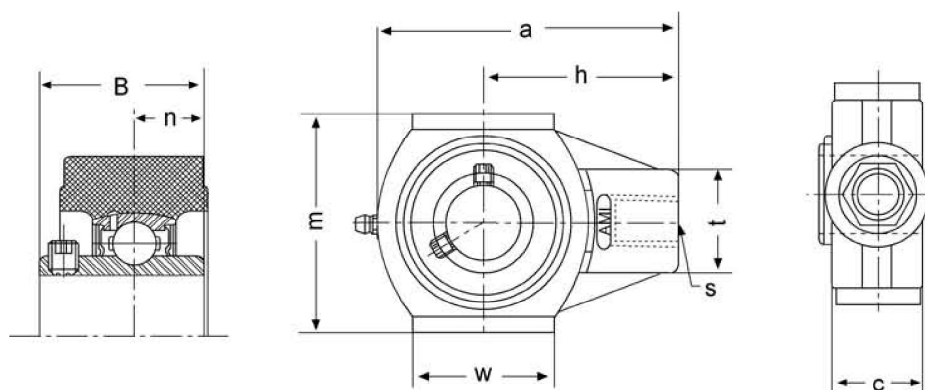
MODE OF LOAD	BREAKING POINT OF HOUSINGS(N)						
	204	205	206	207	208	209	210
	14800	15500	15800	16500	17300	18210	18860
	3930	4530	5100	6500	7800	8710	9750
	8500	10350	10900	11300	12150	12900	13550
	40770	45300	46100	44100	42800	44230	44880



TP-SUCFB200 Series

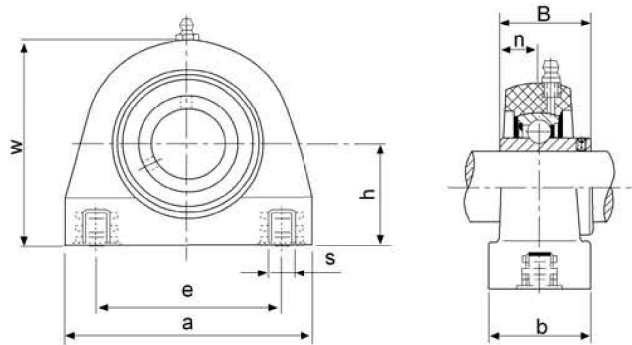
Unit No.	Shaft Dia		Dimensions(mm)													Bolt Size (mm)	Weight (kg)
	d		H ₀	H	J	j	A ₂	A ₁	A	N	L	P	B	S	Z		
	(in)	(mm)															
TP-SUCFB201 201-8	1/2	12	109	42.9	38.1	22.2	19.7	11.4	31.2	11	63	62	31	12.7	38	M10	0.28
TP-SUCFB202 202-9 202-10	9/16 5/8	15	109	42.9	38.1	22.2	19.7	11.4	31.2	11	63	62	31	12.7	38	M10	0.26
TP-SUCFB203 203-11	11/16	17	109	42.9	38.1	22.2	19.7	11.4	31.2	11	63	62	31	12.7	38	M10	0.25
TP-SUCFB204 204-12	3/4	20	109	42.9	38.1	22.2	19.7	11.4	31.2	11	63	62	31	12.7	38	M10	0.25
TP-SUCFB205 205-14 205-15 205-16	7/8 15/16 1	25	121	46	41.3	28.6	21.3	12.3	33	11	70	63	34.1	14.3	41.1	M10	0.30
TP-SUCFB206 206-17 206-18 206-19 206-20	1-1/16 1-1/8 1-3/16 1-1/4	30	139	52.4	47.6	31.8	22.9	14.5	35.4	11	83	76	38.1	15.9	47.6	M10	0.46
TP-SUCFB207 207-20 207-21 207-22 207-23	1-1/4 1-5/16 1-3/8 1-7/16	35	158	60.3	50.8	31.8	24.5	17	37.5	13	94	89	42.9	17.5	50.8	M12	0.66
TP-SUCFB208 208-24 208-25	1-1/2 1-9/16	40	178	67.3	54	35.5	26	18.5	39.5	13	103	99	49.2	19	54	M12	0.9

MODE OF LOAD	BREAKING POINT OF HOUSINGS(N)					
	204	205	206	207	207	208
	7200	9100	12200	12900	13600	13600
	9200	11100	11800	11900	12100	12100
	2600	2800	2900	3100	3300	3300



TP-SUCHP200 Series

Unit No.	Shaft Dia		Dimensions (mm)									Bearing No.	Housing No.	Weight lb
	d		a	c	h	m	t	w	s	B	n			
	(in)	(mm)												
TP-SUCHP201 201-8	1/2	12	99	27.5	63.5	65	36	47	1/2-13 UNC	31	12.7	SUC201 SUC201-8	TP-HP201	0.86
TP-SUCHP202-9 202 202-10	9/16 5/8	15	99	27.5	63.5	65	36	47	1/2-13 UNC	31	12.7	SUC202-9 SUC202 SUC202-10	TP-HP202	0.83
TP-SUCHP203 203-11	11/16	17	99	27.5	63.5	65	36	47	1/2-13 UNC	31	12.7	SUC203 SUC203-11	TP-HP203	0.8
TP-SUCHP204-12 204	3/4 20	20	99	27.5	63.5	65	36	47	1/2-13 UNC	31	12.7	SUC204-12 SUC204	TP-HP204	0.77
TP-SUCHP205-14 205-15 205 205-16	7/8 15/16 1	25	99	27.5	63.5	74	36	47	1/2-13 UNC	34	14.3	SUC205-14 SUC205-15 SUC205 SUC205-16	TP-HP205	0.89
TP-SUCHP206-17 206-18 206 206-19 206-20	1-1/16 1-1/8 30 1-3/16 1-1/4	30	125	34.5	76	88.9	40	63.5	5/8-11 UNC	38.1	15.9	SUC206-17 SUC206-18 SUC206 SUC206-19 SUC206-20	TP-HP206	1.22
TP-SUCHP207-20 207-21 207-22 207 207-23	1-1/4 1-5/16 1-3/8 35 1-7/16	35	125	34.5	76	88.9	40	63.5	5/8-11 UNC	42.9	17.5	SUC207-20 SUC207-21 SUC207-22 SUC207 SUC207-23	TP-HP207	1.77

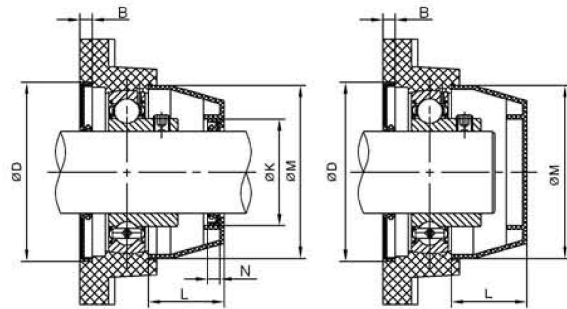


TP-SUCTB200 Series

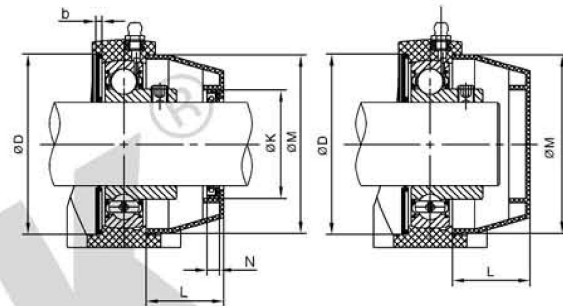
Unit No.	Shaft Dia		Dimensions(mm)								Bolt Size (mm)	Housing No.	Bearing No.	Weight (kg)
	d		h	b	w	e	a	s	B	n				
	(in)	(mm)												
TP-SUCTB201 201-8	1/2	12	33.3	34.5	66	50.8	73	3/8-16	31	12.7	M8	TP-TB201	SUC201 SUC201-8	0.26
TP-SUCTB202-9 202 202-10	9/16 5/8	15	33.3	34.5	66	50.8	73	3/8-16	31	12.7	M8	TP-TB202	SUC202-9 SUC202 SUC202-10	0.26
TP-SUCTB203 203-11	11/16	17	33.3	34.5	66	50.8	73	3/8-16	31	12.7	M8	TP-TB203	SUC203 SUC203-11	0.26
TP-SUCTB204-12 204	3/4 20	20	33.3	34.5	66	50.8	73	3/8-16	31	12.7	M8	TP-TB204	SUC204-12 SUC204	0.26
TP-SUCTB205-14 205-15 205 205-16	7/8 15/16 1	25	36.5	39.7	73.4	50.8	76.2	3/8-16	34.1	14.3	M10	TP-TB205	SUC205-14 SUC205-15 SUC205 SUC205-16	0.32
TP-SUCTB206-17 206-18 206 206-19 206-20	1-11/16 1-1/8 30 1-3/16 1-1/4	30	42.9	42.5	84	76.2	101.6	7/16-14	38.1	15.9	M10	TP-TB206	SUC206-17 SUC206-18 SUC206 SUC206-19 SUC206-20	0.53
TP-SUCTB207-20 207-21 207-22 207 207-23	1-1/4 1-5/16 1-3/8 35 1-7/16	35	47.6	47.6	95	82.6	111	1/2-13	42.9	17.5	M10	TP-TB207	SUC207-20 SUC207-21 SUC207-22 SUC207 SUC207-23	0.73
TP-SUCTB208-24 208-25 208	1-1/2 1-9/16 40	40	49.2	47.6	100.4	88.9	120	1/2-13	49.2	19	M12	TP-TB208	SUC208-24 SUC208-25 SUC208	0.93
TP-SUCTB209-26 209-27 209-28 209	1-5/8 1-11/16 1-3/4 45	45	54.2	50	108.5	95.3	124	1/2-13	49.2	19	M12	TP-TB209	SUC209-26 SUC209-27 SUC209-28 SUC209	1.06
TP-SUCTB210-30 210-31 210 210-32	1-7/8 1-15/16 50 2	50	57.2	54	115	101.6	135	5/8-11	51.6	19	M16	TP-TB210	SUC210-30 SUC210-31 SUC210 SUC210-32	1.25

Plastic Covers: Open/Close Type (OC / CC)

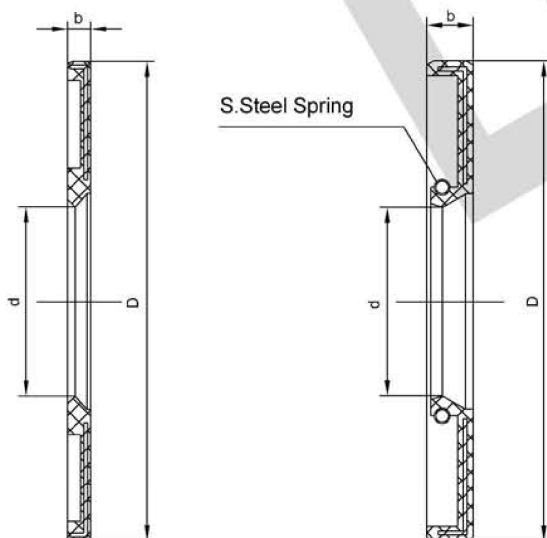
Shaft diameter		Dimensions(mm)						
mm	inch	K	N	L	M	D	B	b
12	1/2	32	7	23	50	52	6	3
15	9/16 5/8	32	7	23	50	52	6	3
17	11/16	32	7	23	50	52	6	3
20	3/4	32	7	23	50	52	6	3
25	13/16 14/16 15/16 1	37	7	25	55	62	6	3
30	1 1/16 1 1/8 1 3/16 1 1/4	42	7	30	64	72	6	3
35	1 1/4 1 5/16 1 3/8 1 7/16	47	7	32	74.5	82	6	3
40	1 1/2 1 9/16	52	7	57	84	88	6	3
45	1 5/8 1 11/16 1 3/4	57	7	41	89	93	6	3
50	1 3/4 1 7/8 1 5/8 2	62	7	47	94	98	6	3
55	2 2 1/8 2 3/16	67	7	49	102	108	6	3
60	2 1/4 2 3/8 2 1/2	72	7	48	116	116	6	3



• Flange Units

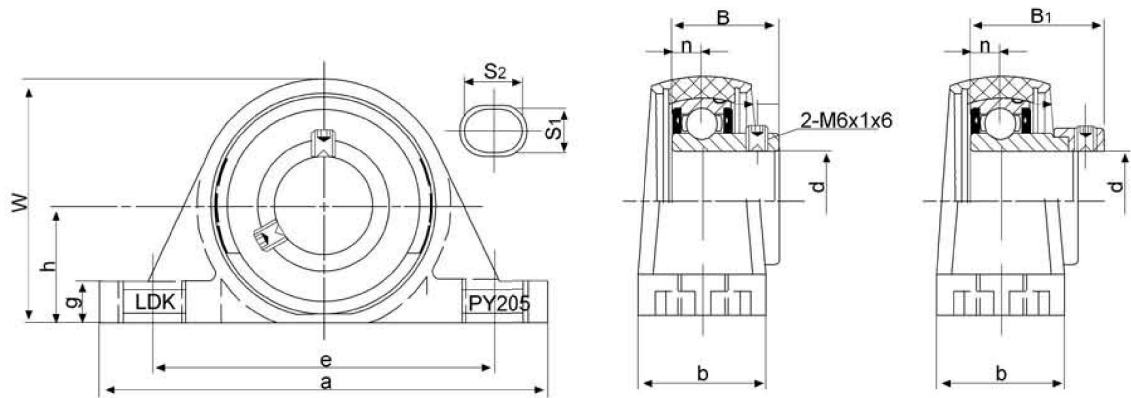


• Pillow Block Units



BACK SEALS

SIZE	DIM	FOR P T PA HOUSING			FOR F FL FB HOUSING		
		d	b	D	d	b	D
BS204		20	3	52	20	6	52
BS205		25	3	56	25	6	62
BS206		30	3	66	30	6	72
BS207		35	3	76	35	6	82
BS208		40	3	86	40	6	88
BS209		45	3	90	45	6	93
BS210		50	3	96	50	6	98
BS211		55	3	107	55	6	108
BS212		60	3	116	60	6	116



SBPY205-16 SAPY205-16 Series

Unit No	Shaft d(mm)	Dimensions(mm)											Bolt Size	Housing No.	Bearing No.
		h	a	e	b	S ₁	S ₂	g	w	B ₁	B	n			
SBPY205-16	1"	29	114	87	32	11	15	10	61	-	27	7.5	3/8	PY205	SB205-16
SSBPY205-16	1"	29	114	87	32	11	15	10	61	-	27	7.5	3/8	PY205	SSB205-16
SAPY205-16	1"	29	114	87	32	11	15	10	61	31.5	-	7.5	3/8	PY205	SA205-16
SSAPY205-16	1"	29	114	87	32	11	15	10	61	31.5	-	7.5	3/8	PY205	SSA205-16