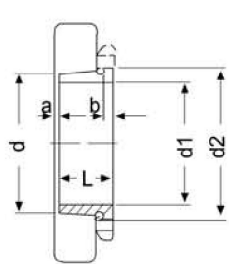


H (HE, HA) Series

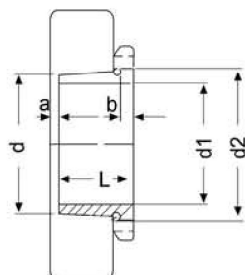
Item No.	d	d1			L	D	C	Item No. (KM/MB)	Weight (kg)
		H	HE	HA					
H204	20	17	--	--	24	32	7	4	0.041
H205	25	20	3/4	13/16	26	38	8	5	0.070
H206	30	25	1	15/16	27	45	8	6	0.099
H207	35	30	1-1/4	1-3/16	29	52	9	7	0.125
H208	40	35	1-1/4	1-5/16	31	58	10	8	0.174
H209	45	40	1-1/2	1-7/16	33	65	11	9	0.227
H210	50	45	1-3/4	1-11/16	35	70	12	10	0.274
H211	55	50	2	1-15/16	37	75	12	11	0.308
H212	60	55	2-1/4	2-1/16	38	80	13	12	0.346
H213	65	60	2-1/4	2-3/16	40	85	14	13	0.401
H214	70	60	--	--	41	92	14	14	0.593
H215	75	65	2-1/2	2-7/16	43	98	15	15	0.707
H216	80	70	2-3/4	2-11/16	46	105	17	16	0.882
H217	85	75	3	2-15/16	50	110	18	17	1.02
H218	90	80	3-1/4	3-3/16	52	120	18	18	1.19
H219	95	85	3-1/4	3-5/16	55	125	19	19	1.37
H220	100	90	3-1/2	3-7/16	58	130	20	20	1.49
H221	105	95	--	--	60	140	20	21	1.72
H222	110	100	4	3-15/16	63	145	21	22	1.93
H304	20	17	--	--	28	32	7	4	0.045
H305	25	20	3/4	13/16	29	38	8	5	0.075
H306	30	25	1	15/16	31	45	8	6	0.109
H307	35	30	1-1/4	1-3/16	35	52	9	7	0.142
H308	40	35	1-1/4	1-5/16	36	58	10	8	0.189
H309	45	40	1-1/2	1-7/16	39	65	11	9	0.248
H310	50	45	1-3/4	1-11/16	42	70	12	10	0.303
H311	55	50	2	1-15/16	45	75	12	11	0.345
H312	60	55	2-1/4	2-1/16	47	80	13	12	0.394
H313	65	60	2-1/4	2-3/16	50	85	14	13	0.458
H314	70	60	--	--	52	92	14	14	0.723
H315	75	65	2-1/2	2-7/16	55	98	15	15	0.831
H316	80	70	2-3/4	2-11/16	59	105	17	16	1.03
H317	85	75	3	2-15/16	63	110	18	17	1.18
H318	90	80	3-1/4	3-3/16	65	120	18	18	1.37
H319	95	85	3-1/4	3-5/16	68	125	19	19	1.56

H (HE, HA) Series

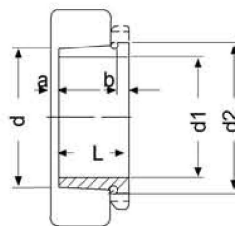
Item No.	d	d1			L	D	C	C1	Item No. (KM/MB)	Weight (kg)
		H	HE	HA						
H320	100	90	3-1/2	3-7/16	71	130	20	--	20	1.69
H321	105	95	--	--	74	140	20	--	21	1.95
H322	110	100	4	3-15/16	77	145	21	--	22	2.18
H2304	20	17	--	--	31	32	7	--	4	0.049
H2305	25	20	3/4	13/16	35	38	8	--	5	0.087
H2306	30	25	1	15/16	38	45	8	--	6	0.126
H2307	35	30	1-1/4	13/16	43	52	9	--	7	0.165
H2308	40	35	1-1/4	15/16	46	58	10	--	8	0.224
H2309	45	40	1-1/2	17/16	50	65	11	--	9	0.280
H2310	50	45	1-3/4	1-11/16	55	70	12	--	10	0.382
H2311	55	50	2	1-15/16	59	75	12	--	11	0.420
H2312	60	55	2-1/4	2-1/16	62	80	13	--	12	0.481
H2313	65	60	2-1/4	2-3/16	65	85	14	--	13	0.557
H2314	70	60	--	--	68	92	14	--	14	0.897
H2315	75	65	2-1/2	2-7/16	73	98	15	--	15	1.05
H2316	80	70	2-3/4	2-11/16	78	105	17	--	16	1.28
H2317	85	75	3	2-15/16	82	110	18	--	17	1.45
H2318	90	80	3-1/4	3-3/16	86	120	18	--	18	1.69
H2319	95	85	3-1/4	3-5/16	90	125	19	--	19	1.93
H2320	100	90	3-1/2	3-7/16	97	130	20	--	20	2.15
H2321	105	95	--	--	101	140	20	--	21	2.46
H2322	110	100	4	3-15/16	105	145	21	--	22	2.74
H2324	120	110	4-1/4	4-3/16	112	155	22	--	24	3.19
H2326	130	115	4-1/2	4-7/16	121	165	23	--	26	4.60
H2328	140	125	5	4-15/16	131	180	24	--	28	5.55
H2330	150	135	5-1/4	5-3/16	139	195	26	--	30	6.63
H2332	160	140	5-1/2	5-7/16	147	210	28	--	32	9.14
H2334	170	150	6	5-15/16	154	220	29	--	34	10.2
H2336	180	160	6-1/2	6-7/16	161	230	30	--	36	11.3
H2338	190	170	6-3/4	6-15/16	169	240	31	--	38	12.6
H2340	200	180	7	7-3/16	176	250	32	--	40	13.9
H2344	220	200	--	--	186	280	35	44	44	16.7
H2348	240	220	--	--	199	300	37	46	48	19.7
H2352	260	240	--	--	211	330	39	49	52	24.2
H2356	280	260	--	--	224	350	41	51	56	27.8



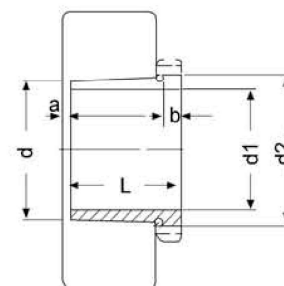
Series: AH2



AH3, AHX3



AH23, AHX23



AH30, AHX30

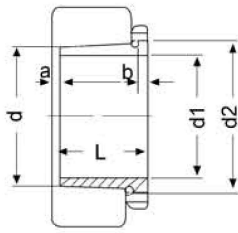
Quit Sleeve

Item No.	d	d1	L	b	a	d2	Weight (kg)
AH208	40	35	25	6	2	M45x1.5	0.081
AH209	45	40	26	6	3	M50x1.5	0.095
AH210	50	45	28	7	3	M55x2	0.114
AH211	55	50	29	7	3	M60x2	0.132
AH212	60	55	32	8	3	M65x2	0.161
AH213	65	60	32.5	8	3.5	M75x2	0.213
AH214	70	65	33.5	8	3.5	M80x2	0.240
AH215	75	70	34.5	8	3.5	M85x2	0.259
AH216	80	75	35.5	8	3.5	M90x2	0.284
AH217	85	80	38.5	9	3.5	M95x2	0.314
AH218	90	85	40	9	4	M100x2	0.351
AH219	95	90	43	10	4	M105x2	0.403
AH220	100	95	45	10	4	M110x2	0.481
AH222	110	105	50	11	4	M120x3	0.547
AH224	120	115	53	12	4	M130x2	0.679
AH226	130	125	53	12	4	M140x2	0.725
AH228	140	135	56	13	5	M150x2	0.818
AH230	150	145	60	14	5	M160x3	0.963
AH232	160	150	64	15	5	M170x3	1.70
AH234	170	160	69	16	5	M180x3	1.98
AH236	180	170	69	16	5	M190x3	2.14
AH238	190	180	73	17	5	Tr205x4	2.52
AH240	200	190	77	18	5	Tr215x4	2.87
AH244	220	200	85	18	6	Tr235x4	5.49
AH248	240	220	96	22	6	Tr260x4	7.34
AH252	260	240	105	23	6	Tr280x4	8.80
AH256	280	260	105	23	8	Tr300x4	9.42
AH308	40	35	29	6	3	M45x1.5	0.090
AH309	45	40	31	6	3	M50x1.5	0.109
AHX310	50	45	35	7	3	M55x2	0.137
AHX311	55	50	37	7	3	M60x2	0.161
AHX312	60	55	40	8	3	M65x2	0.189
AH313	65	60	42	8	3	M75x2	0.253
AH314	70	65	43	8	4	M80x2	0.280
AH315	75	70	45	8	4	M85x2	0.313
AH316	80	75	48	8	4	M90x2	0.365
AHX317	85	80	52	9	4	M95x2	0.429
AHX318	90	85	53	9	4	M100x2	0.461
AHX319	95	90	57	10	4	M105x2	0.532
AHX320	100	95	59	10	4	M110x2	0.582
AHX322	110	105	63	12	4	M120x2	0.663
AHX324	120	115	69	13	4	M130x2	0.866
AHX326	130	125	74	14	4	M140x2	1.02
AHX328	140	135	77	14	5	M150x2	1.16
AHX330	150	145	83	15	5	M165x3	1.50
AH332	160	150	88	16	5	M180x3	2.69
AH334	170	160	93	17	5	M190x3	3.07
AH2308	40	35	40	7	3	M45x1.5	0.128
AH2309	45	40	44	7	3	M50x1.5	0.164

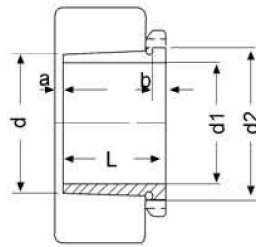
Quit Sleeve

Item No.	d	d1	L	b	a	d2	Weight (kg)
AHX2310	50	45	50	9	3	M55x2	0.209
AHX2311	55	50	54	10	3	M60x2	0.253
AHX2312	60	55	58	11	3	M65x2	0.297
AH2313	65	60	61	12	3	M75x2	0.395
AHX2314	70	65	64	12	4	M80x2	0.466
AHX2315	75	70	68	12	4	M85x2	0.534
AHX2316	80	75	71	12	4	M90x2	0.597
AHX2317	85	80	74	13	4	M95x2	0.670
AHX2318	90	85	79	14	4	M100x2	0.779
AHX2319	95	90	85	16	4	M105x2	0.886
AHX2320	100	95	90	16	4	M110x2	0.998
AHX2322	110	105	98	16	4	M125x2	3.35
AHX2324	120	115	105	17	4	M135x2	1.60
AHX2326	130	125	115	19	4	M145x2	1.97
AHX2328	140	135	125	20	5	M155x3	2.33
AHX2330	150	145	135	24	5	M165x3	2.82
AH2332	160	150	140	24	6	M180x3	4.72
AH2334	170	160	146	24	6	M190x3	5.25
AH2336	180	170	154	26	6	M200x3	5.83
AH2338	190	180	160	26	7	Tr210x4	6.63
AH2340	200	190	170	30	7	Tr220x4	7.54
AH2344	220	200	181	30	8	Tr240x4	13.5
AH2348	240	220	189	30	8	Tr260x4	15.5
AH2352	260	240	205	30	8	Tr290x4	19.6
AH2356	280	260	212	30	8	Tr310x5	21.6
AHX3024	120	115	60	13	4	M130x2	0.750
AHX3026	130	125	67	14	4	M140x2	0.930
AHX3028	140	135	68	14	5	M150x2	1.01
AHX3030	150	145	72	15	5	M160x3	1.15
AH3032	160	150	77	16	5	M170x3	2.06
AH3034	170	160	85	17	5	M180x3	2.43
AH3036	180	170	92	17	6	M190x3	2.81
AH3038	190	180	96	18	6	Tr205x4	3.32
AH3040	200	190	102	19	6	Tr215x4	3.80
AH3044	220	200	111	20	6	Tr235x4	7.40
AH3048	240	220	116	21	7	Tr260x4	8.75
AH3052	260	240	128	23	7	Tr280x4	10.7
AH3056	280	260	131	24	8	Tr300x4	12.0
AH3060	300	280	145	26	8	Tr320x5	14.4
AH3064	320	300	149	27	8	Tr345x5	16.0
AH3068	340	320	162	28	9	Tr365x5	19.5
AH3072	360	340	167	30	9	Tr385x5	21.0
AH3076	380	360	170	31	10	Tr410x5	23.2
AH3080	400	380	183	33	10	Tr430x5	27.3
AH3084	420	400	186	34	10	Tr450x5	29.0
AHX3088	440	420	194	35	11	Tr470x5	32.0
AHX3092	460	440	202	37	11	Tr490x5	35.2
AHX3096	480	460	205	38	12	Tr520x6	39.2

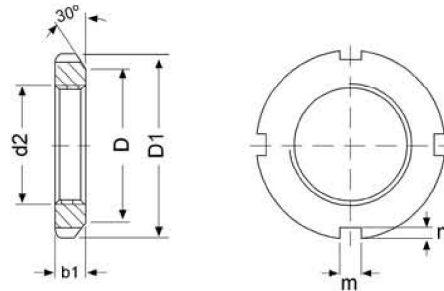
BEARINGS



Series: AH31, AHX31



AH22, AH32, AHX32



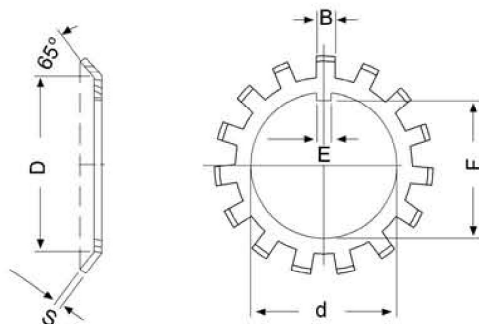
Series: AN/KM

Quit Sleeve

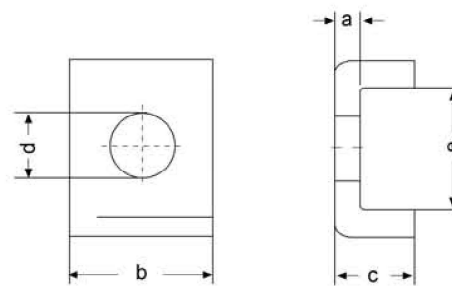
Item No.	d	d1	L	b	a	d2	Weight (kg)
AHX3120	100	95	64	11	4	M110x2	0.650
AHX3122	110	105	68	11	4	M125x2	0.760
AHX3124	120	115	75	12	4	M130x2	0.950
AHX3126	130	125	78	12	4	M140x2	1.08
AHX3128	140	135	83	14	5	M150x2	1.28
AHX3130	150	145	96	15	5	M165x3	1.79
AH3132	160	150	103	16	5	M180x3	3.21
AH3134	170	160	104	16	5	M190x3	3.40
AH3136	180	170	116	19	6	M200x3	4.22
AH3138	190	180	125	20	6	Tr210x4	4.89
AH3140	200	190	134	21	6	Tr220x4	5.49
AH3144	220	200	145	23	6	Tr240x4	10.4
AH3148	240	220	154	25	7	Tr260x4	12.0
AH3152	260	240	172	26	7	Tr290x4	16.2
AH3156	280	260	175	28	8	Tr310x5	17.5
AH3160	300	280	192	30	8	Tr330x5	20.8
AH3164	320	300	209	31	8	T350x5	24.5
AH3168	340	320	225	33	9	Tr370x5	29.0
AH3172	360	340	229	35	9	Tr400x5	33.0
AH3176	380	360	232	36	10	Tr420x5	35.7
AH3180	400	380	240	38	10	Tr440x5	39.5
AH3184	420	400	266	40	10	Tr460x5	46.5
AHX3188	440	420	270	42	11	Tr480x5	49.8
AHX3192	460	440	285	43	11	Tr510x6	57.9
AHX3196	480	460	295	45	12	Tr530x6	63.1
AHX3218	90	85	63	10	4	M100x2	0.576
AHX3219	95	90	67	11	4	M105x2	0.655
AHX3220	100	95	73	11	4	M110x2	0.767
AHX3222	110	105	82	11	4	M125x2	1.04
AHX3224	120	115	90	13	4	M135x2	1.30
AHX3226	130	125	98	15	4	M145x2	1.58
AHX3228	140	135	104	15	5	M155x3	1.84
AHX3230	150	145	114	17	5	M165x3	2.22
AH3232	160	150	124	20	6	M180x3	4.08
AH3234	170	160	134	24	6	M190x3	4.80
AH3236	180	170	140	25	6	M200x3	5.32
AH3238	190	180	145	25	7	Tr210x4	5.90
AH3240	200	190	153	34	7	Tr220x4	6.68
AH3260	300	280	228	34	8	Tr330x5	26.0
AH3264	320	300	246	36	8	Tr350x5	30.6
AH2236	180	170	105	17	5	M200x3	3.73
AH2238	190	180	112	18	5	Tr210x4	4.25
AH2240	200	190	118	19	5	Tr220x4	4.68
AH2244	220	200	130	20	6	Tr240x4	9.10
AH2248	240	220	144	21	6	Tr260x4	11.1
AH2252	260	240	155	23	6	Tr290x4	14
AH2256	280	260	155	24	8	Tr310x5	15.2
AH2260	300	280	170	26	8	Tr330x5	18.1
AH2264	320	300	180	27	10	Tr350x5	20.2

Lock Nut

Item No.	d2	D1	b1	D	m	n	Weight (kg)
AN/KM0	M10x0.75	18	4	13.5	3	2	0.004
AN/KM1	M12x1	22	4	17	3	2	0.007
AN/KM2	M15x1	25	5	21	4	2	0.010
AN/KM3	M17x1	28	5	24	4	2	0.013
AN/KM4	M20x1	32	6	26	4	2	0.019
AN/KM5	M25x1.5	38	7	32	5	2	0.025
AN/KM6	M30x1.5	45	7	38	5	2	0.043
AN/KM7	M35x1.5	52	8	44	6	2	0.053
AN/KM8	M40x1.5	58	9	50	6	2.5	0.085
AN/KM9	M45x1.5	65	10	56	6	2.5	0.119
AN/KM10	M50x1.5	70	11	61	6	2.5	0.148
AN/KM11	M55x2	75	11	67	7	3	0.158
AN/KM12	M60x2	80	11	73	7	3	0.174
AN/KM13	M65x2	85	12	79	7	3	0.203
AN/KM14	M70x2	92	12	85	8	3.5	0.242
AN/KM15	M75x2	98	13	90	8	3.5	0.287
AN/KM16	M80x2	105	15	95	8	3.5	0.397
AN/KM17	M85x2	110	16	102	8	3.5	0.451
AN/KM18	M90x2	120	16	108	10	4	0.556
AN/KM19	M95x2	125	17	113	10	4	0.658
AN/KM20	M100x2	130	18	120	10	4	0.698
AN/KM21	M105x2	140	18	126	12	5	0.845
AN/KM22	M110x2	145	19	133	12	5	0.965
AN/KM23	M115x2	150	19	137	12	5	1.01
AN/KM24	M120x2	155	20	138	12	5	1.08
AN/KM25	M125x2	160	21	148	12	5	1.19
AN/KM26	M130x2	165	21	149	12	5	1.25
AN/KM27	M135x2	175	22	160	14	6	1.55
AN/KM28	M140x2	180	22	160	14	6	1.56
AN/KM29	M145x2	190	24	172	14	6	1.80
AN/KM30	M150x2	195	24	171	14	6	2.03
AN/KM31	M155x3	200	25	182	16	7	2.30
AN/KM32	M160x3	210	25	182	16	7	2.59
AN/KM33	M165x3	210	26	193	16	7	2.70
AN/KM34	M170x3	220	26	193	16	7	2.80
AN/KM36	M180x3	230	27	203	18	8	3.07
AN/KM38	M190x3	240	28	214	18	8	3.39
AN/KM40	M200x3	250	29	226	18	8	3.69
AN/KML24	M120x2	145	20	135	12	5	0.780
AN/KML26	M130x2	155	21	145	12	5	0.880
AN/KML28	M140x2	165	22	155	12	5	0.990
AN/KML30	M150x2	180	24	170	14	5	1.38
AN/KML32	M160x3	190	25	180	14	5	1.56
AN/KML34	M170x3	200	26	190	16	5	1.72
AN/KML36	M180x3	210	27	200	16	5	1.95
AN/KML38	M190x3	220	28	210	16	5	2.08
AN/KML40	M200x3	240	29	222	18	8	2.98



Series: MB



Series: AL/MS ALL/MS

Lock Washer

Item No.	d ₂	D	S	E	F	B	Weight (100pcs/kg)
MB0	10	13.5	1	3	8.5	3	0.131
MB1	12	17	1	3	10.5	3	0.192
MB2	15	21	1	4	13.5	4	0.253
MB3	17	24	1	4	15.5	4	0.313
MB4	20	26	1	4	18.5	4	0.350
MB5	25	32	1.25	5	23	5	0.640
MB6	30	38	1.25	5	27.5	5	0.780
MB7	35	44	1.25	6	32.5	5	1.04
MB8	40	50	1.25	6	37.5	6	1.23
MB9	45	56	1.25	6	42.5	6	1.52
MB10	50	61	1.25	6	47.5	6	1.60
MB11	55	67	1.25	8	52.5	7	1.96
MB12	60	73	1.5	8	57.5	7	2.53
MB13	65	79	1.5	8	62.5	7	2.90
MB14	70	85	1.5	8	66.5	8	3.34
MB15	75	90	1.5	8	71.5	8	3.56
MB16	80	95	1.75	10	76.5	8	4.64
MB17	85	102	1.75	10	81.5	8	5.24
MB18	90	108	1.75	10	86.5	10	6.23
MB19	95	113	1.75	10	91.5	10	6.70
MB20	100	120	1.75	12	96.5	10	7.65
MB21	105	126	1.75	12	100.5	12	8.26
MB22	110	133	1.75	12	105.5	12	9.40
MB23	115	137	2	12	110.5	12	10.8
MB24	120	138	2	14	115	12	10.5
MB25	125	148	2	14	120	12	11.8
MB26	130	149	2	14	125	12	11.3
MB27	135	160	2	14	130	14	14.4
MB28	140	160	2	16	135	14	14.2
MB29	145	172	2	16	140	14	16.8
MB30	150	171	2	16	145	14	15.5
MB31	155	182	2.5	16	147.5	16	20.9
MB32	160	182	2.5	18	154	16	22.2
MB33	165	193	2.5	18	157.5	16	24.1
MB34	170	193	2.5	18	164	16	24.7
MB36	180	203	2.5	20	174	18	26.8
MB38	190	214	2.5	20	184	18	27.8
MB40	200	226	2.5	20	194	18	29.3
MB44	220	250	3	24	213	20	40.0
MB48	240	270	3	24	233	20	40.0
MB52	260	300	3	28	253	24	60.0
MB56	280	320	3	28	273	24	62.0

Lock Device

Item No.	a	b	c	d	e	Weight (100pcs/kg)
AL/MS3144	4	20	12	9	22.5	2.60
AL/MS3148	4	20	12	9	22.5	2.60
AL/MS3152	4	24	12	12	25.5	3.39
AL/MS3156	4	24	12	12	25.5	3.39
AL/MS3160	4	24	12	12	30.5	3.79
AL/MS3164	5	24	15	12	31	5.35
AL/MS3168	5	28	15	14	38	6.65
AL/MS3172	5	28	15	14	38	6.65
AL/MS3176	5	32	15	14	40	7.96
AL/MS3180	5	32	15	18	45	8.20
AL/MS3184	5	32	15	18	45	8.20
AL/MS3188	5	36	15	18	43	9.00
AL/MS3192	5	36	15	18	43	9.00
AL/MS3196	5	36	15	18	53	10.4
ALL/MS3044	4	20	12	7	13.5	2.12
ALL/MS3048	4	20	12	9	17.5	2.29
ALL/MS3052	4	20	12	9	17.5	2.29
ALL/MS3056	4	24	12	9	17.5	2.92
ALL/MS3060	4	24	12	9	20.5	3.16
ALL/MS3064	5	24	15	9	21	4.56
ALL/MS3068	5	24	15	9	21	4.56
ALL/MS3072	5	28	15	9	20	5.03
ALL/MS3076	5	28	15	12	24	5.28
ALL/MS3080	5	28	15	12	24	5.28
ALL/MS3084	5	32	15	12	24	6.11
ALL/MS3088	5	32	15	14	28	6.45
ALL/MS3092	5	32	15	14	28	6.45
ALL/MS3096	5	36	15	14	28	7.29