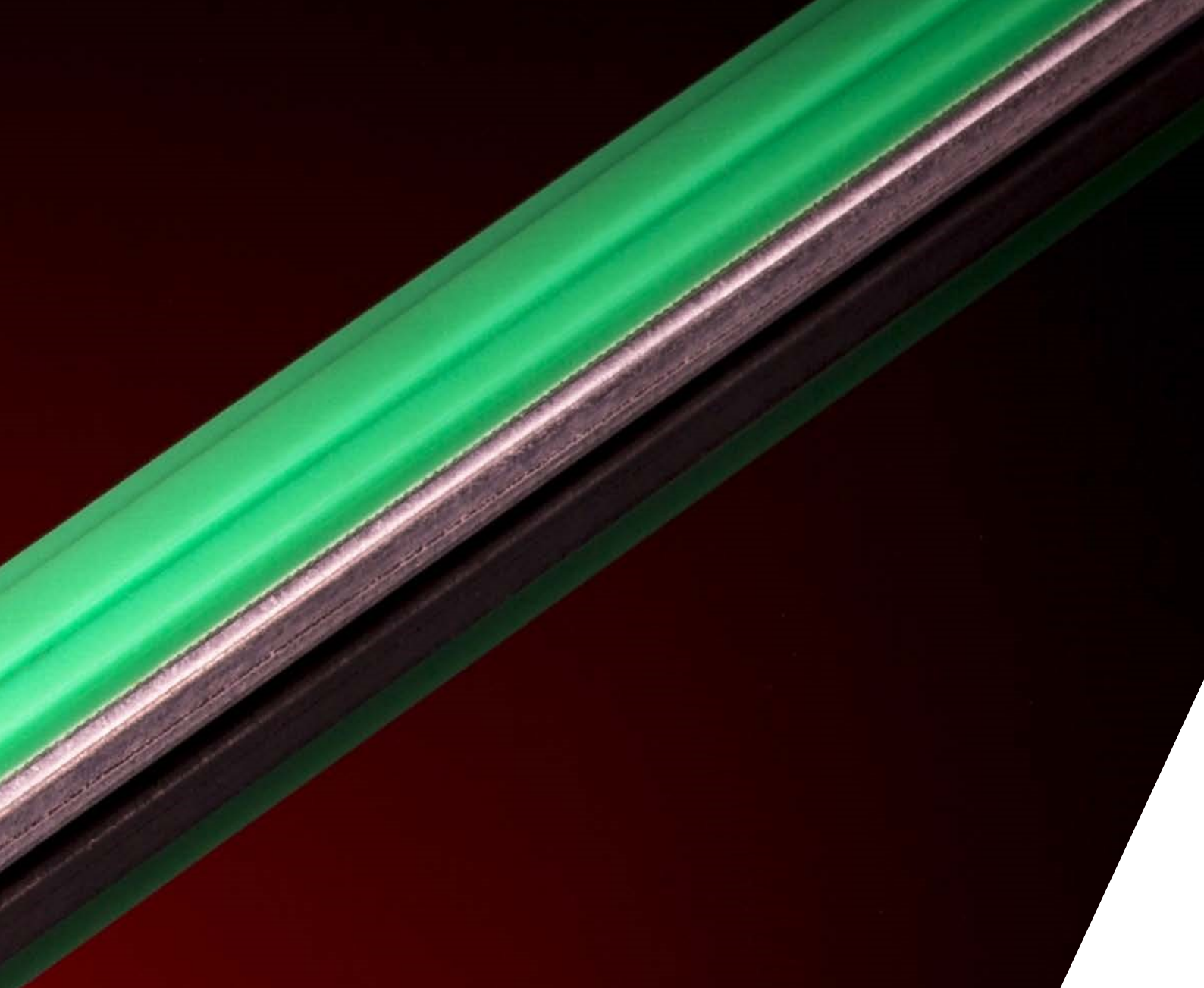


**sedis** 



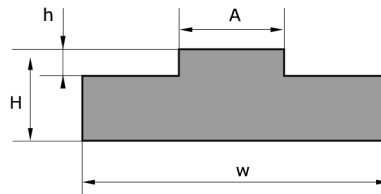
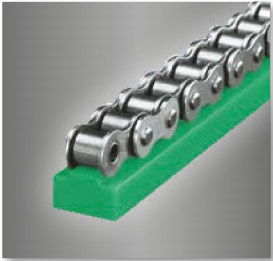


***WEAR STRIPS***

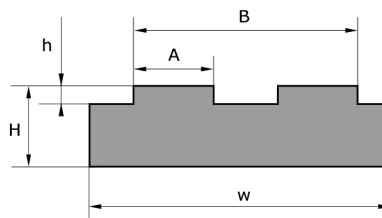
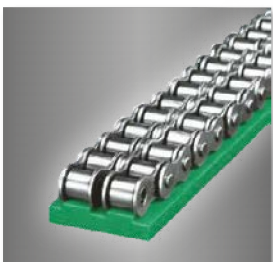


## PEHD GREEN WEAR STRIPS

Wear strips and rails are supplied in lengths of 2 meters. It is possible to supply specific lengths on request.


**MS**

Reference	ISO	Pitch	W	H	A	h	Kg/m
MS-1	06B-1	9,525	15	10	5,5	1,5	0,135
MS-2	08B-1	12,7	20	10	7,5	2,2	0,165
MS-215	08B-1	12,7	20	15	7,5	2,2	0,260
MS-220	08B-1	12,7	20	20	7,4	2,2	0,350
MS-3	10B-1	15,875	20	10	9,3	2,6	0,160
MS-315	10B-1	15,875	20	15	9,3	2,6	0,260
MS-320	10B-1	15,875	20	20	9,3	2,6	0,350
MS-4	12B-1	19,05	25	10	11,3	2,4	0,210
MS-415	12B-1	19,05	25	15	11,3	2,4	0,325
MS-420	12B-1	19,05	25	20	11,3	2,4	0,440
MS-5	16B-1	25,4	40	15	16,5	3,5	0,470
MS-520	16B-1	25,4	40	20	16,5	3,5	0,660
MS-6	20B-1	31,75	45	15	19	4,2	0,530
MS-620	20B-1	31,75	45	20	19	4,3	0,720
MS-7	24B-1	38,1	60	15	24,7	5,5	0,785
MS-8	28B-1	44,45	75	20	30,0	6,8	1,130
MS-9	32B-1	50,8	80	20	30,0	7,7	1,210

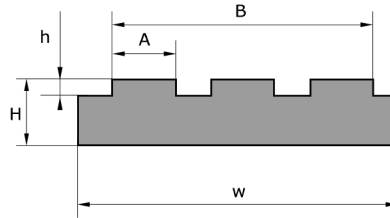
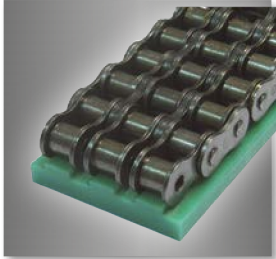

**MD**

Reference	ISO	Pitch	W	H	A	h	B	Kg/m
MD-1	06B-2	9,525	25	10	5,4	1,5	15,70	0,230
MD-2	08B-2	12,7	35	10	7,5	2,2	21,4	0,306
MD-215	08B-2	12,7	35	15	7,5	2,2	21,4	0,530
MD-3	10B-2	15,875	40	10	9,3	2,6	25,9	0,344
MD-315	10B-2	15,875	40	15	9,2	2,6	26	0,524
MD-4	12B-2	19,05	45	10	11,3	2,4	30,8	0,396
MD-415	12B-2	19,05	45	15	11,3	2,4	30,8	0,598
MD-5	16B-2	25,4	65	15	16,5	3,5	48,3	0,863
MD-520	16B-2	25,4	65	20	16,5	3,5	48,3	1,156
MD-6	20B-2	31,75	70	15	19	4,3	54,5	0,912
MD-620	20B-2	31,75	70	20	19	4,3	54,5	1,232
MD-7	24B-2	38,1	88	20	24,6	5,6	72,9	1,499
MD-8	28B-2	44,45	88,4	25	28,8	6,8	88,4	1,790
MD-9	32B-2	50,8	87,4	30	28,8	7,7	87,4	1,750

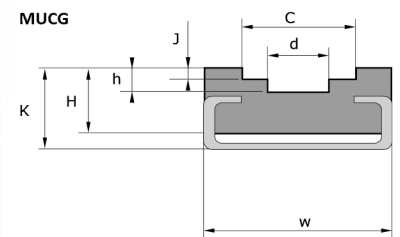
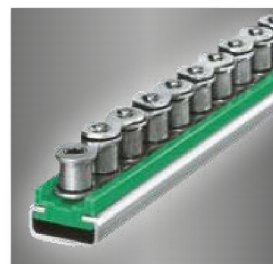
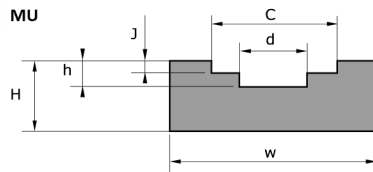
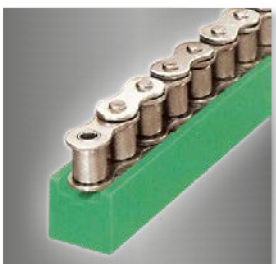


## PEHD GREEN WEAR STRIPS

Wear strips and rails are supplied in lengths of 2 meters. It is possible to supply specific lengths on request.



MT			W	H	A	h	B	Kg/m
Reference	ISO	Pitch						
MT-1	06B-3	9,525	35	10	5,4	1,5	25,9	0,306
MT-2	08B-3	12,7	45	10	7,4	2,2	35,3	0,381
MT-215	08B-3	12,7	45	15	7,4	2,2	35,3	0,595
MT-220	08B-3	12,7	45	20	7,4	2,2	35,3	0,808
MT-3	10B-3	15,875	55	10	9,2	2,6	42,4	0,455
MT-4	12B-3	19,05	60	15	11,3	2,4	50,3	0,546
MT-5	16B-3	25,4	95	20	16,5	3,5	80,3	1,167
MT-6	20B-3	31,75	105	15	19	4,2	92,0	1,304
MT-7	24B-3	38,1	135	20	24,7	5,5	121,5	2,247
MT-8	28B-3	44,45	170	25	30,1	6,8	149,3	3,522
MT-9	32B-3	50,8	170	30	30,1	7,7	149,3	4,262



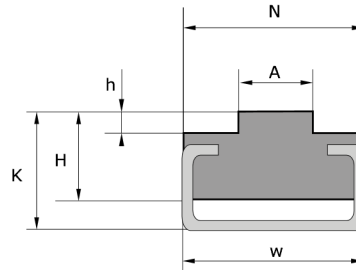
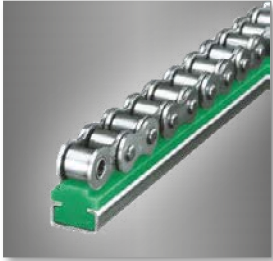
MU & MUCG											
Reference	ISO	Pitch	W	H	C	h	J	d	K	Rail	Kg/m
MU-1	06B-1	9,525	20	15	9,2	4,2	2,8	4			0,257
MU-2	08B-1	12,7	25	15	12,7	4,8	3,5	5			0,308
MU-3	10B-1	15,875	25	15	15,2	5,1	3,6	6			0,296
MU-4	12B-1	19,05	25	20	16,7	5,7	3,9	7			0,403
MU-5	16B-1	25,4	35	25	24,4	10	8,4	9			0,624
MUCG-1*	06B-1	9,525	20	14	9,4	4,2	2,8	4	17	C2010	0,720
MUCG-2*	08B-1	12,7	20	24	12,8	5	3,5	5	11	C2812	1,140
MUCG-3*	10B-1	15,875	24	28	15,4	5	3,6	6	18	C2812	1,130
MUCG-4*	12B-1	19,05	24	28	17	5,7	3,9	7	18	C2812	1,270
MUCG-5*	16B-1	25,4	33	38	24	10,6	8,4	9	30	C3818	2,030

\* Add the reference /ENS to have the wear strip and the rail



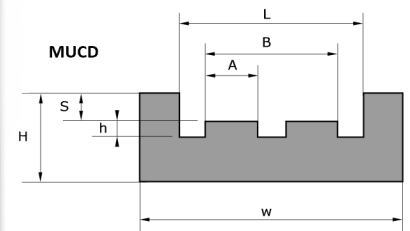
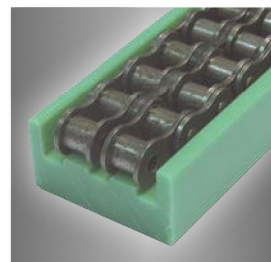
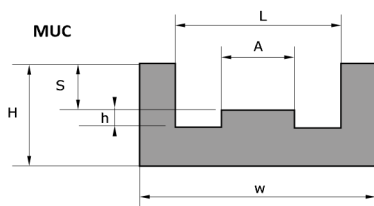
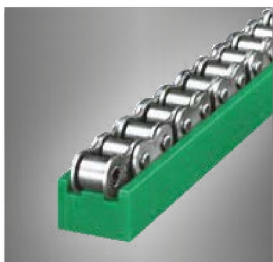
# PEHD GREEN WEAR STRIPS

Wear strips and rails are supplied in lengths of 2 meters. It is possible to supply specific lengths on request.



MTCG			W	N	H	K	h	A	Rail	Kg/m
Wear strip references	ISO	Pitch								
MTCG-1*	06B-1	9,525	20		15	17	1,5	5,4	C2010	0,620
MTCG-2*	08B-1	12,7	20	17	15	17	2,2	7,5	C2010	0,695
MTCG-3*	10B-1	15,875	20	17	15	17	2,6	9,3	C2010	0,700
MTCG-4*	12B-1	19,05	28	23,5	15	18	2,4	11,3	C2812	1,170
MTCG-4/20*	12B-1	19,05	20	20	15	17	2,4	11,3	C2010	0,830
MTCG-5*	16B-1	25,4	28	23,5	15	18	3,5	16,5	C2812	2,245
MTCG-6*	20B-1	31,75	28	28	15	18	4,3	19	C2812	2,305
MTCG-7*	24B-1	38,1	38	33	25	30	5,5	24,7	C3818	2,390
MTCG-8*	28B-1	44,45	38	38	23	30	6,8	30	C05	2,410
MTCG-9*	32B-1	50,8	38	38	23	30	7,7	30	C05	2,480

\* Add the reference /ENS to have the wear strip and the rail

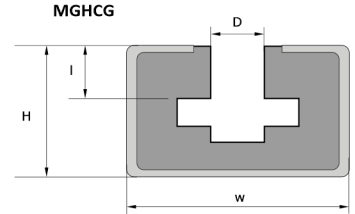
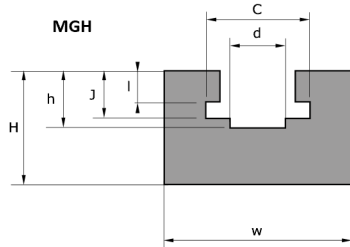
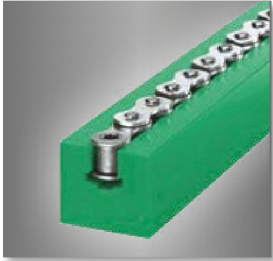


MUC & MUCD			W	H	L	h	A	S	B	Kg/m
Wear strip references	ISO	Pitch								
MUC-1	06B-1	9,525	25	10	15	1,5	5,4	4,4		0,170
MUC-2	08B-1	12,7	30	15	20	2,2	7,4	7,2		0,275
MUC-3	10B-1	15,875	33	20	23	2,6	9,2	9,5		0,405
MUC-4	12B-1	19,05	38	20	28	2,4	11,3	11,2		0,410
MUC-5	16B-1	25,4	51	25	41	3,5	16,5	16,5		0,510
MUCD-1	06B-2	9,525	36	15	26	1,5	5,4	4,4	16	0,390
MUCD-2	08B-2	12,7	45	20	35	2,2	7,4	7,2	21	0,620
MUCD-3	10B-2	15,875	50	25	40	2,6	9,2	9,5	26	0,816
MUCD-4	12B-2	19,05	56	25	46	2,4	11,3	11,1	31	0,810
MUCD-5	16B-2	25,4	85	30	75	3,5	16,5	16,5	48	1,200



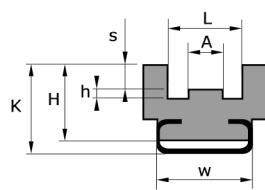
## PEHD GREEN WEAR STRIPS

Wear strips and rails are supplied in lengths of 2 meters. It is possible to supply specific lengths on request.



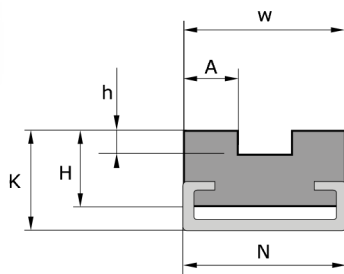
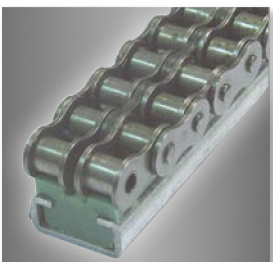
### MGH & MGHCG

Wear strip references	ISO	Pitch	W	H	C	h	I	d	J	Rail	Kg/m
MGH-1	06B-1	9,525	20	25	9,3	9,9	5,5	4	8,7		0,414
MGH-2	08B-1	12,7	24	30	12,8	12,7	7,5	5	11,5		0,564
MGH-3	10B-1	15,875	30	35	15,4	14,8	9,3	6	13,5		0,832
MGH-4	12B-1	19,05	40	35	16,9	17,5	11,3	7,9	15,9		1,106
MGH-5	16B-1	25,4	40	45	24,4	27	16,5	9	25,7		1,231
MGH-6	20B-1	31,75	50	50	28	31,7	18	11	29,5		1,726
MGH-7	24B-1	38,1	60	60	36,5	41,2	24	16	38,2		2,332
MGH-8	28B-1	44,45	60	70	41	49	30	17	47		3,173
MGH-9	32B-1	50,8	70	75	44,5	50	30	19	47,3		3,264
MGHCG-1*	06B-1	9,525	30	24			5,6			C3024	2,150
MGHCG-2*	08B-1	12,7	30	24			7,6			C3024	2,150
MGHCG-2E*	08B-1	12,7	28	16			7,6			C2816	2,100
MGHCG-3*	10B-1	15,875	30	24			9,3			C3024	2,100
MGHCG-4*	12B-1	19,05	30	24			11,3			C3024	2,060
MGHCG-5*	16B-1	25,4	45	40			16,5			C4540	2,060



### MUCCG

Wear strip references	ISO	Pitch	W	H	K	L	h	A	S	Rail	Kg/m
MUCCG-1*	06B-1	9,525	20	14	17	13	1,5	3,8	1,1	C2010	0,760
MUCCG-2*	08B-1	12,7	20	16	20	16,3	2,2	5,7	1,6	C2010	1,100
MUCCG-3*	10B-1	15,875	28	16	20	19,2	2,6	7,4	2,1	C2812	1,305
MUCCG-4*	12B-1	19,05	28	18	22	21,8	2,4	9,2	2,8	C2812	2,335
MUCCG-5*	16B-1	25,4	38	25	30	35	3,5	15	3,3	C3818	2,440



### MTCGD

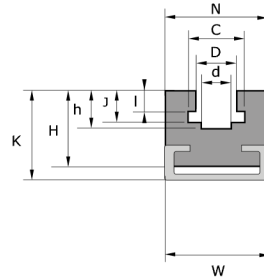
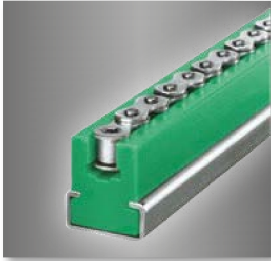
Wear strip references	ISO	Pitch	W	N	H	K	h	A	Rail	Kg/m
MTCGD-1*	06B-2	9,525	15,5	20	14	17	1,5	5,4	C2010	0,615
MTCGD-2*	08B-2	12,7	21,4	20	15	17	2,2	7,5	C2010	0,715
MTCGD-3*	10B-2	15,875	25,7	20	15	17	2,6	9,3	C2010	1,165
MTCGD-4*	12B-2	19,05	30,7	28	15	20	2,4	11,3	C2812	1,200
MTCGD-5*	16B-2	25,4	48	38	20	27	3,5	16,5	C3818	1,170
MTCGD-6*	20B-2	31,75	55	38	25	30	4,3	19	C3818	2,480
MTCGD-7*	24B-2	38,1	72	38	30	35	5,5	24,7	C3818	3,020

\* Add the reference /ENS to have the wear strip and the rail



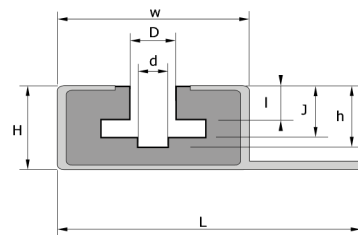
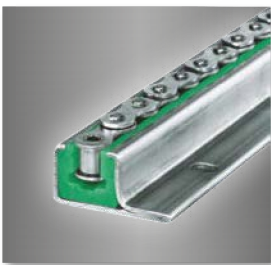
## PEHD GREEN WEAR STRIPS

Wear strips and rails are supplied in lengths of 2 meters. It is possible to supply specific lengths on request.



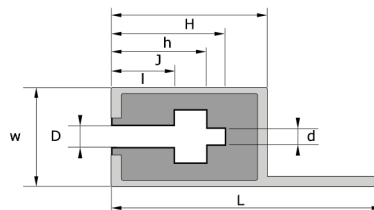
### MGHLCG

Wear strip references	ISO	Pitch	W	N	H	K	I	J	h	d	D	C	Rail	Kg/m
MGHLCG-1*	06B-1	9,525	20	20	17,5	21	5,5	8,7	10	4	6,6	9,4	C2010	0,622
MGHLCG-2*	08B-1	12,7	28	24	28	32	7,4	11,5	13	5	8,7	12,8	C2816	1,450
MGHLCG-3*	10B-1	15,875	28	24	28	32	9,3	13,5	14,8	6	10,4	15,4	C2816	1,402
MGHLCG-4*	12B-1	19,05	38	32	35	43	11,3	15,9	17,5	7	12,3	17	C3818	1,709
MGHLCG-5*	16B-1	25,4	38	40	45	50	16	25,7	27,7	10	16,4	24	C3818	1,600
MGHLCG-6*	20B-1	31,75	60	60	50	55	18	29,3	31,7	11	20	28	C6020	4,800
MGHLCG-7*	24B-1	38,1	60	60	60	65	24	38,2	41,2	16	27	36,6	C6020	5,000
MGHLCG-8*	28B-1	44,45	60	70	75	80	30	46,9	49	17	30	40	C6020	6,200
MGHLCG-9*	32B-1	50,8	60	70	75	80	30	47,3	50	19	31	44,6	C6020	6,200



### MGHPCG

Wear strip references	ISO	Pitch	H	W	L	I	J	h	d	D	Rail	Kg/m
MGHPCG-1*	06B-1	9,525	25	31	53	5,6	8,7	9,9	4	6,6	C15	2,340
MGHPCG-2*	08B-1	12,7	25	31	53	7,6	11,5	12,7	5	8,7	C15	2,300
MGHPCG-3*	10B-1	15,875	25	31	53	9,3	13,5	14,8	6	10,4	C15	2,250
MGHPCG-4*	12B-1	19,05	25	31	53	11,5	15,9	17,5	7	12,3	C15	2,250



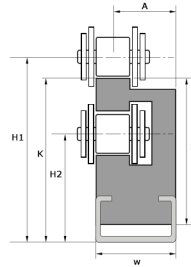
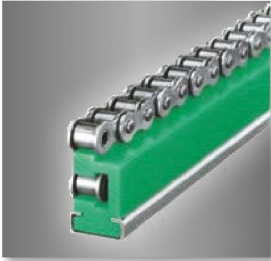
### MGHGCG

Wear strip references	ISO	Pitch	H	W	L	I	J	h	d	D	Rail	Kg/m
MGHGCG-1*	06B-1	9,525	25	31	47	5,6	8,7	9,9	4	6,6	C14	2,150
MGHGCG-2*	08B-1	12,7	25	31	47	7,6	11,5	12,7	5	8,7	C14	2,150
MGHGCG-3*	10B-1	15,875	25	31	47	9,3	13,5	14,8	6	10,4	C14	2,100
MGHGCG-4*	12B-1	19,05	25	31	47	11,5	15,9	17,5	7	12,3	C14	2,060

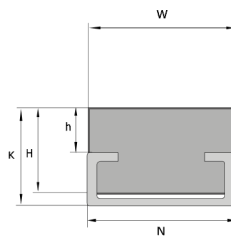
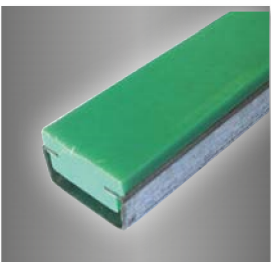


## PEHD GREEN WEAR STRIPS

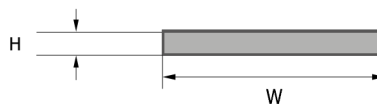
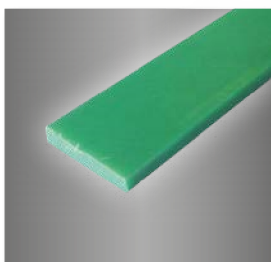
Wear strips and rails are supplied in lengths of 2 meters. It is possible to supply specific lengths on request.


**M2PCG**

Wear strip references	ISO	Pitch	W	H1	H2	A	K	H	Rail	Kg/m
M2PCG-1*	06B-1	9,525	20	31,6	19,5	17,3	28,4	26,4	C2010	0,900
M2PCG-2*	08B-1	12,7	20	33,8	18	16,5	30	287	C2010	0,960
M2PCG-3*	10B-1	15,875	20	41,1	21	15,5	36	33	C2010	1,120
M2PCG-4*	12B-1	19,05	28	46,5	24	18,6	41	37	C2812	1,700
M2PCG-5*	16B-1	25,4	38	69,4	34	29,7	61,4	52,4	C3818	3,100


**MHCG**

Wear strip references	W	N	K	H	h	Rail	Kg/m
MHCG-2006*	20	24	6	5	1	C2405	0,350
MHCG-2011*	20	24	11	10	5,8	C2405	0,450
MHCG-2014*	20	20	14	10	4	C2010	0,790
MHCG-2017*	20	20	17	15	7	C2010	0,880
MHCG-2022*	20	20	20	18	10	C2010	0,940
MHCG-2815*	28	28	15	10	3	C2812	1,180
MHCG-2818*	28	28	18	15	6	C2812	1,320
MHCG-2824*	28	28	24	20	12	C2812	1,488
MHCG-3822*	38	38	22	15	4	C3818	2,200
MHCG-3824*	38	38	24	20	7	C3818	2,460
MHCG-3830*	38	38	30	20	12	C3818	2,690
MHCG-6030*	60	60	30	20	10	C6020	3,260


**GR**

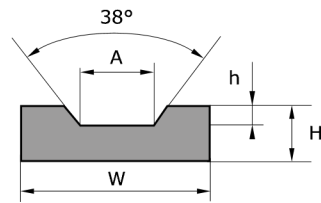
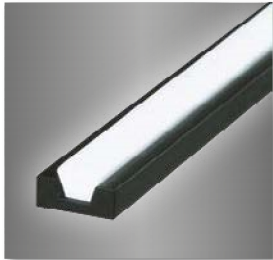
References	H (mm)	20	25	30	35	40	45	50	60	70	80	90	100
GR..X2	2	0,86	1,12	1,33	1,59	1,77	2,02	2,20	2,63	3,10	3,53	3,96	4,39
GR..X3	3	1,33	1,64	2,02	2,28	2,63	3,01	3,31	3,96	4,65	5,30	5,98	6,59
GR..X5	5	2,20	2,76	3,31	3,87	4,39	4,99	5,51	6,59	7,71	8,78	9,90	10,98



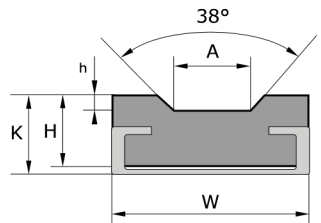


# BLACK ANTISTATIC PEHD BELT GUIDES

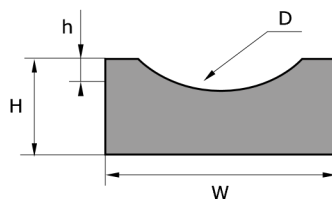
Wear strips and rails are supplied in lengths of 2 meters. It is possible to supply specific lengths on request.


**MCT**

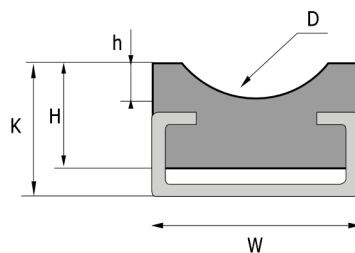
Wear strip references	W	H	h	A	Kg/m
MCT-10Z	20	10	3,5	6	0,197
MCT-13A	20	12	6	9,2	0,232
MCT-15E	25	12	5	10,0	0,292
MCT-17B	30	15	8	10,5	0,429
MCT-22C	35	20	11	13,5	0,660
MCT-30D	40	25	13	19,0	0,944


**MCTCG**

Wear strip references	W	H	h	K	A	Rail	Kg/m
MCTCG-10Z*	20	15	3	17	6,5	C2010	0,787
MCTCG-13A*	20	15	5	17	8,0	C2010	0,782
MCTCG-15E*	25	20	5	24	10,0	C2812	1,352
MCTCG-17B*	30	20	8	24	10,5	C2812	1,439
MCTCG-22C*	38	25	11	32	13,5	C3818	2,265
MCTCG-30D*	40	30	13	35	19,0	C05	2,574

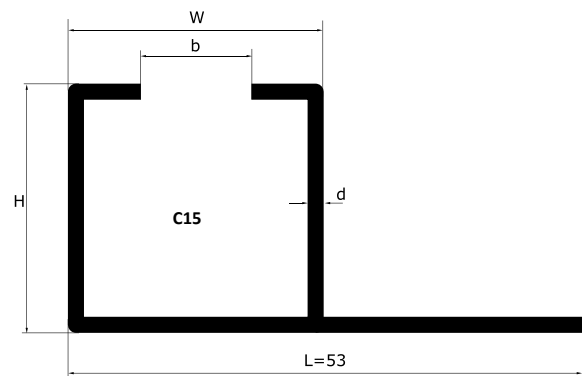
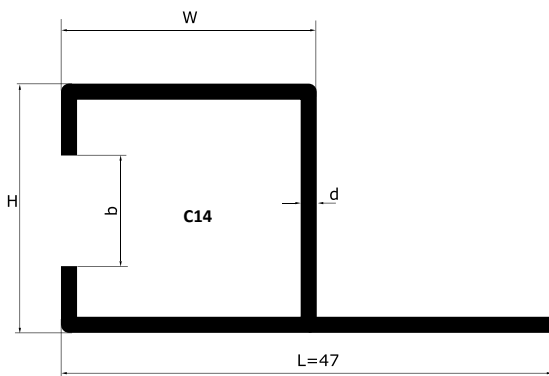
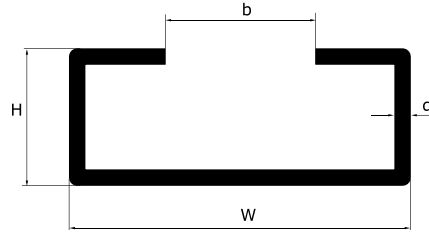

**MCOR**

Wear strip references	D	W	H	h	Kg/m
MCOR-04	4	15	10	2,0	0,144
MCOR-05	5	15	10	2,5	0,140
MCOR-06	6	20	10	3,0	0,186
MCOR-08	8	20	10	4,0	0,175
MCOR-10	10	25	12	5,0	0,260
MCOR-12	12	25	12	6,0	0,244
MCOR-15	15	25	15	7,5	0,286
MCOR-20	20	30	20	10,0	0,442

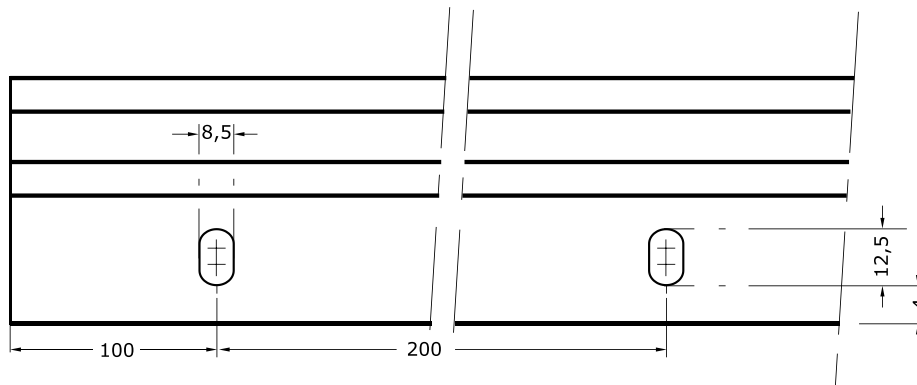

**MCORCG**

Wear strip references	D	W	H	h	K	Rail	Kg/m
MCORCG-04*	4	20	10	2	14	C2010	0,680
MCORCG-05*	5	20	10	2,5	14	C2010	0,675
MCORCG-06*	6	20	10	3	14	C2010	0,660
MCORCG-08*	8	20	10	4	14	C2010	0,650
MCORCG-10*	10	28	15	5	18	C2812	1,179
MCORCG-12*	12	28	15	6	18	C2812	1,160
MCORCG-15*	15	28	15	7,5	18	C2812	1,160
MCORCG-20*	20	28	20	10	24	C2812	1,280

\* Add the reference /ENS to have the wear strip and the rail


**RAILS - GALVANIZED OR STAINLESS STEEL**


Punching of the fixation of the rail C14 and C15



Reference		W	H	b	d	Kg/m
Galvanized steel	Stainless steel					
C2405	C2405IN	24	5,2	17,5	1	0,28
C2010	C2010IN	20	10	10,0	1 / 1,5	0,43
C2812	C2812IN	28	12	14,0	2,2	0,95
C2816	C2816IN	28	16	14,0	2,3	1,15
C3818	C3818IN	38	18	22,0	1,5	0,98
C3024	C3024IN	30	24	20,0	1,5	0,94
C3818	C3818IN	38	18	22,0	2,5	1,43
C4540	C4540IN	45	40	31,0	2	2,05
C6020	C6020IN	60	20	36,0	2,5	2,16
C2815	C2815IN	28	15	12,0	2,3	1,15
C-14	C47IN / 31 / 25	25	31	20,0	2	1,20
C-15	C53IN / 31 / 25	31	25	20,0	2	1,20