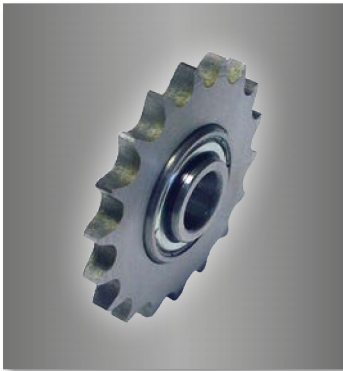
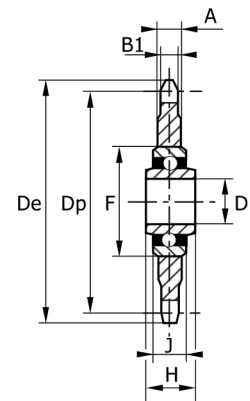
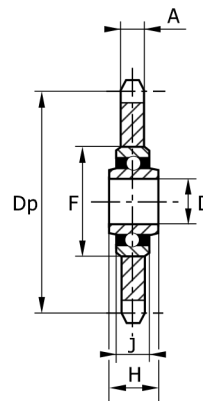
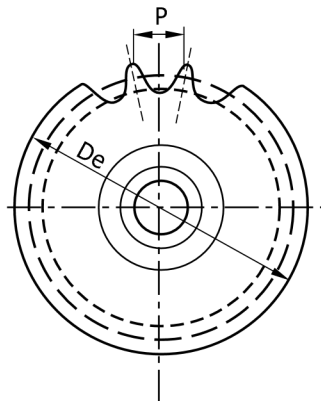




## SPROCKET WHEEL SET WITH SEALED BALLBEARING



The quality of machining and of mounting of the double sealed ballbearings gives an increased breaking load and a better wear resistance to our products.

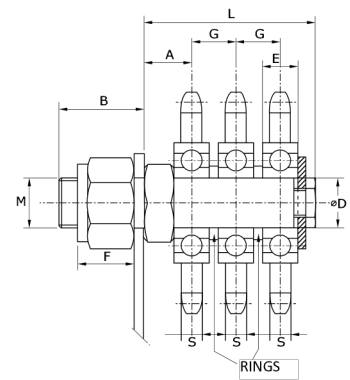
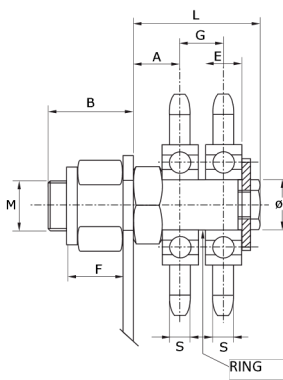
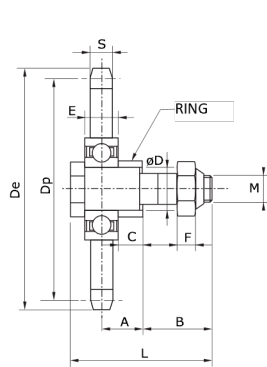


Pitch (mm)	Pitch (inch)	Chain	Reference	Z	De	Dp	B1	A	D	F	H	J	Kg
8	8	05B-1	PTR05B023	23	62,00	58,75	2,8	7,0	16	40	18,3	12	0,13
9,525	3/8" x 7/32"	06B-1	PTR06B021	21	68,00	63,91	5,3	7,0	16	40	18,3	12	0,15
12,7 x 3,18	1/2" x 1/8"	081-1	PTR081018	18	78,90	73,14	3,0	7,0	16	40	18,3	12	0,18
12,7 x 4,76	1/2" x 3/16"	083-1	PTR083016	16	70,90	65,10	4,5	7,0	16	40	18,3	12	0,17
12,7 x 4,76	1/2" x 3/16"	083-1	PTR083018	18	78,90	73,14	4,5	7,0	16	40	18,3	12	0,20
12,7	1/2" x 5/16"	08B-1	PTR08B016	16	69,50	65,10	-	7,2	16	40	18,3	12	0,17
12,7	1/2" x 5/16"	08B-1	PTR08B018	18	77,80	73,14	-	7,2	16	40	18,3	12	0,22
12,7	1/2" x 5/16"	08B-1	PTR08B020	20	85,80	81,19	-	7,2	16	40	18,3	12	0,27
15,875	5/8" x 3/8"	10B-1	PTR10B013	13	73,00	66,32	-	9,1	16	40	18,3	12	0,20
15,875	5/8" x 3/8"	10B-1	PTR10B014	14	78,00	71,34	-	9,1	16	40	18,3	12	0,23
15,875	5/8" x 3/8"	10B-1	PTR10B015	15	83,00	76,36	-	9,1	16	40	18,3	12	0,27
15,875	5/8" x 3/8"	10B-1	PTR10B017	17	93,00	86,30	-	9,1	16	40	18,3	12	0,36
19,05	3/4" x 7/16"	12B-1	PTR12B013	13	87,50	79,59	-	11,1	16	40	18,3	12	0,34
19,05	3/4" x 7/16"	12B-1	PTR12B015	15	99,80	91,63	-	11,1	16	40	18,3	12	0,47
25,4	1" x 17,02	16B-1	PTR16B012	12	109,00	98,14	-	16,2	20	47	17,7	14	0,72
25,4	1" x 17,02	16B-1	PTR16B015	15	133,00	122,17	-	16,2	20	47	17,7	14	0,90
31,75	1" 1/4 x 3/4"	20B-1	PTR20B013	13	147,80	132,65	-	18,5	25	52	21	15	1,64



Dimensions in mm

## SPROCKET WHEEL SET WITH SEALED BALLBEARING - TYPE TR (MACHINED PINS)



SIMPLEX															Size	Kg
Reference Pin + Wheel	Reference of Wheel only	Chain Pitch	Z	De	Dp	S	M	D	A	B	C	E	F	L		
TR1 03B 017	PT1 03B 017	5	17	29,00	27,20	2,3	M6	6	7	15	4	6	6	28	11	0,100
TR1 04B 015	PT1 04B 015	6	15	31,10	28,86	2,6	M6	6	7	15	4	6	6	28		
TR1 05B 014	PT1 05B 014	8	14	39,20	35,95	2,8	M8	8	7,5	16	4	7	8	30	15	0,120
TR1 06B 017	PT1 06B 017	9,525	17	55,50	51,83	5,3	M10	12	12	22	7	10	10	44		
TR1 081 013	PT1 081 013	12,7 x 3,3	13	59,40	53,06	3	M10	12	12	22	7	10	10	44	15	0,140
TR1 083 013	PT1 083 013	12,7 x 4,88	13	59,40	53,06	4,5	M10	12	12	22	7	10	10	44		
TR1 08B 017	PT1 08B 017	12,7	17	74,00	69,11	7,2	M12	17	15	26	9	12	12	53	18	0,280
TR1 10B 016	PT1 10B 016	15,875	16	88,30	81,37	9,1	M12	17	15	26	9	12	12	53		
TR1 12B 014	PT1 12B 014	19,05	14	93,80	85,61	11,1	M12	17	15	26	9	13	12	53	27	0,490
TR1 16B 012	PT1 16B 012	25,4	12	109,70	98,14	16,2	M20	20	25	28	18	14	17	66		
TR1 20B 012	PT1 20B 012	31,75	12	137,00	122,68	18,5	M24	30	40	50	30,5	19	21	115	38 - 45	2,350
TR1 24B 012	PT1 24B 012	38,1	12	161,00	147,22	24,1	M36	40	50	74	38,5	23	29	155		

DUPLEX											Size	Kg
Reference Pin + Wheel	Chain Pitch	Z	M	D	A	B	F	G	L			
TR2 06B 017	9,525	17	M12	12	12	35	10	10,24	33	27	0,235	
TR2 08B 017	12,7	17	M18	17	15	45	12	13,92	44	38	0,600	
TR2 10B 016	15,875	16	M20	17	15	45	12	16,59	46,6	38	0,900	
TR2 12B 014	19,05	14	M20	17	15	45	12	19,46	49,5	38	1,100	
TR2 16B 012	25,4	12	M24	20	24	55	14	31,88	71,8	45	2,000	

TRIPLEX										Size	Kg
Reference Pin + Wheel	Chain Pitch	Z	M	D	A	B	F	G	L		
TR3 06B 017	9,525	17	M12	12	12	35	10	10,24	43	18	0,325
TR3 08B 017	12,7	17	M18	17	15	45	12	13,92	58	27	0,800
TR3 10B 016	15,875	16	M20	17	15	45	12	16,59	63,2	38	1,300
TR3 12 014	19,05	14	M20	17	15	45	12	19,46	69	38	1,600

Protection : white zinc coat

The customer must widen the hole in the elastic element bore when necessary



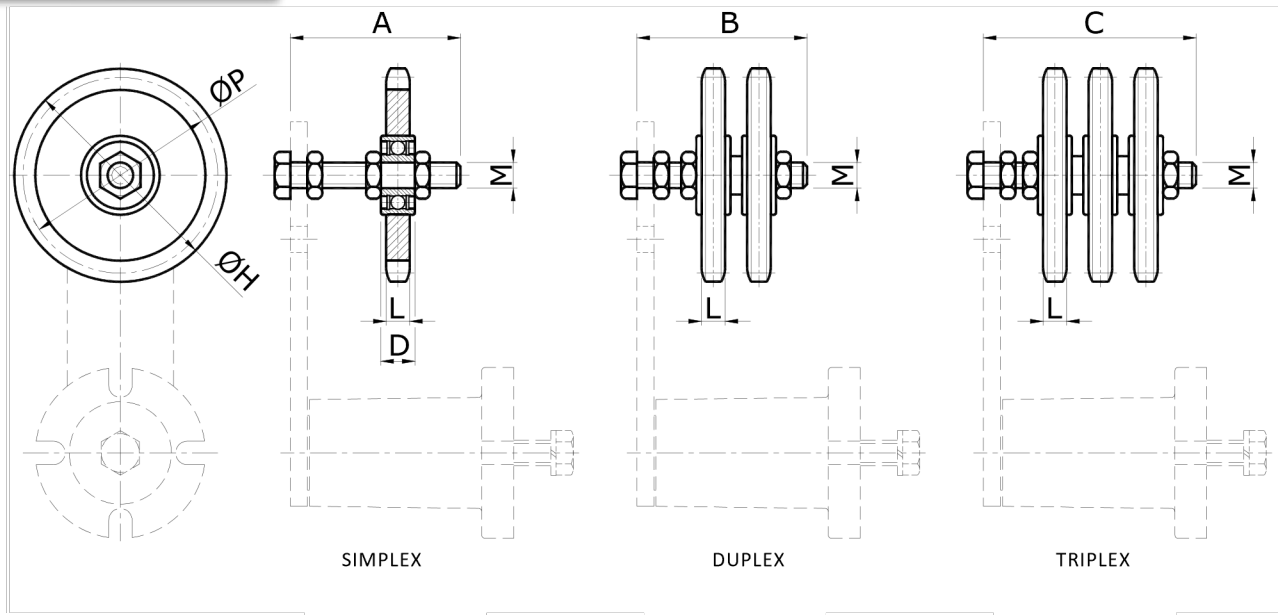
# SPROCKET WHEEL SET WITH SEALED BALLBEARING - TYPE TF



Chain tensioning wheels in galvanized steel with sealed bearing, perfect to adjust the tension of simplex, duplex and triplex chains.

Maximum speed of 1m/sec - Maximum operating temperature : 100°C.

The kits are supplied complete with galvanized screws.



Simplex chain reference (S)	Duplex chain reference (D)	Triplex chain reference (T)	Chains	Size	Z*	A	B	C	D	ØH	L	M	ØP	Kg		
														S	D	T
TF1 06B 015 BT15	TF2 06B 015 BT15		3/8"x7/32"	15	15	55	55		9	49,3	5,3	10	45,81	0,13	0,23	
TF1 06B 015 BT18	TF2 06B 015 BT18	TF3 06B 015 BT18	3/8"x7/32"	18	15	55	60	70	9	49,3	5,3	10	45,81	0,13	0,23	0,26
TF1 08B 015 BT18	TF2 08B 015 BT18		1/2"x5/16"	18	15	55	60		9	65,5	7,2	10	61,09	0,21	0,37	
		TF3 08B 015 BT27	1/2"x5/16"	27	15			90	12	65,5	7,2	12	61,09		0,51	
TF1 10B 015 BT27	TF2 10B 015 BT27	TF3 10B 015 BT27	5/8"x3/8"	27	15	80	90	90	12	83,0	9,1	12	76,36	0,38	0,60	0,96
		TF3 10B 015 BT38	5/8"x3/8"	38	15			120	15	83,0	9,1	20	76,36		1,26	
TF1 12B 015 BT27	TF2 12B 015 BT27		3/4"x7/16"	27	15	80	90	90	12	99,8	11,1	12	91,63	0,56	1,00	
TF1 12B 015 BT38	TF2 12B 015 BT38	TF3 12B 015 BT38	3/4"x7/16"	38	15	80	90	120	15	99,8	11,1	20	91,63	0,81	1,35	1,60
TF1 16B 013 BT38	TF2 16B 013 BT38		1"X17,02 mm	38	13	100	120	120	15	117,0	16,2	20	106,12	1,23	2,10	
		TF3 16B 013 BT45	1"X17,02 mm	45	13			160	15	117,0	16,2	20	106,12		2,92	
TF1 20B 013 BT45	TF2 20B 013 BT45	TF3 20B 013 BT45	1" 1/4x3/4"	45	13	100	140	160	15	147,8	18,5	20	132,65	2,28	3,60	5,20
TF1 24B 011 BT45	TF2 24B 011 BT45	TF3 24B 011 BT45	1" 1/2x1"	45	11	140	140	180	15	150,0	24,1	20	135,21	2,33	4,20	6,10

\*Z : Number of teeth