

sedis 





COUPLINGS

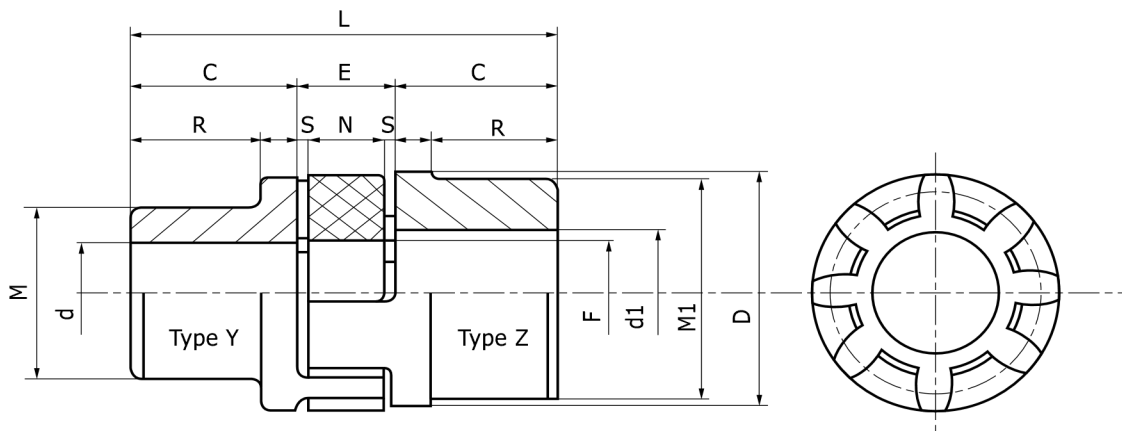


JAW COUPLINGS

MATERIALS :

Cast iron (200 UNI EN 1561)

Aluminum



JAW COUPLINGS - CAST IRON EN-GJL-200 UNI EN 1561															Maximum Speed (rpm)	Nominal torque (Nm)
Reference*	Pilot bore Ø		d _{max}	d1 _{max}	C	D	E	F	M	M1	N	R	S	L		
	Bush Y	Bush Z														
AEP 19Y-19Z**	-	-	19	24	25	40	16	18	30	40	12	19	2	66	14 000	17
AEP 24Y-24Z	-	-	24	32	30	55	18	27	40	55	14	24	2	78	10 600	60
AEP 28Y-28Z	-	-	28	38	35	65	20	30	48	65	15	27,5	2,5	90	8 500	160
AEP 38Y-38Z	-	-	38	45	45	80	24	38	66	78	18	36,5	3	114	7 100	325
AEP 42Y-42Z	-	-	42	55	50	95	26	46	75	94	20	40	3	126	6 000	450
AEP 48Y-48Z	-	-	48	60	56	105	28	51	85	104	21	45	3,5	140	5 600	525
AEP 55Y-55Z	-	-	55	70	65	120	30	60	98	118	22	52	4	160	4 150	625
AEP 65Y-65Z	-	-	65	75	75	135	35	68	115	134	26	61	4,5	185	4 250	640
AEP 75Y-75Z	-	-	75	90	85	160	40	80	135	158	30	69	5	210	3 550	1465
AEP 90Y-90Z	38	38	90	100	100	200	45	100	160	180	34	81	5,5	245	2 800	3600

* Example of reference for a coupling with a Y type bush and Z type bush

** Made in steel

(1) Flector in red thermoplastic elastomer with hardness of 98 Shore A

Rework : machined bore ØdH7 + keyway on request

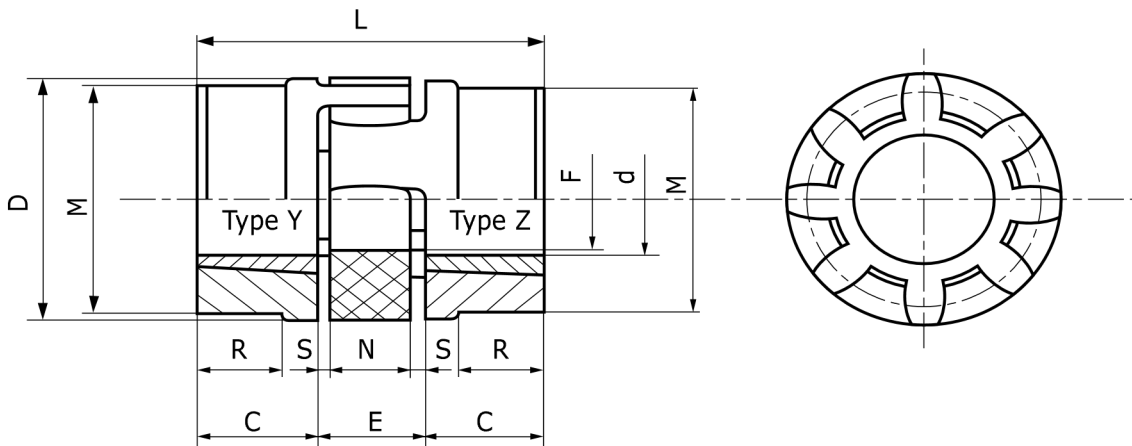
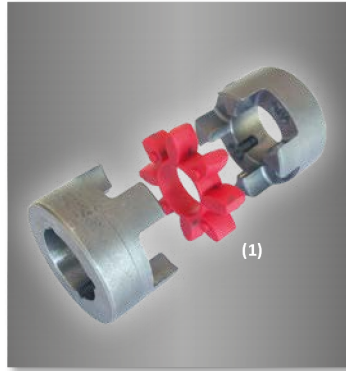
JAW COUPLINGS - ALUMINIUM															Nominal torque (Nm)
Reference*	Pilot bore Ø		d _{max}	d1 _{max}	C	D	E	F	M	M1	N	R	S	L	
	Bush Y	Bush Z													
AEP 19Y-19Z / AL	-	10	19	24	25	40	16	18	30	40	12	19	2	66	17
AEP 24Y-24Z / AL	8	14	24	32	30	55	18	27	40	55	14	24	2	78	60
AEP 28Y-28Z / AL	10	16	28	38	35	65	20	30	48	65	15	27,5	2,5	90	160
AEP 38Y-38Z / AL	12	20	38	45	45	80	24	38	66	78	18	36,5	3	114	325

* Example of reference for a coupling with a Y type bush and Z type bush



JAW COUPLINGS

MATERIAL : Cast iron
EN-GJL-200 UNI EN 1561



JAW COUPLINGS MOYEU AMOVIBLE - CAST IRON EN-GJL-200 UNI EN 1561													Nominal torque (Nm)
Reference*	Bush	Max bore		Standard Bush									
		<i>d</i> min	<i>d</i> max	C	D	E	F	M	N	R	S	L	
AEP 28Y-28Z MA	1108	9	28	23	65	20	30	65	15	2.5	-	66	160
AEP 38Y-38Z MA	1108	9	28	23	80	24	38	78	18	3	15	70	325
AEP 42Y-42Z MA	1610	14	42	26	95	26	46	94	20	3	16	78	450
AEP 48Y-48Z MA	1615	14	42	39	105	28	51	104	21	3.5	28	106	525
AEP 55Y-55Z MA	2012	14	50	33	120	30	60	118	22	4	20	96	625
AEP 75Y-75Z MA	2517	16	60	52	160	40	80	158	30	5	36	144	1 465

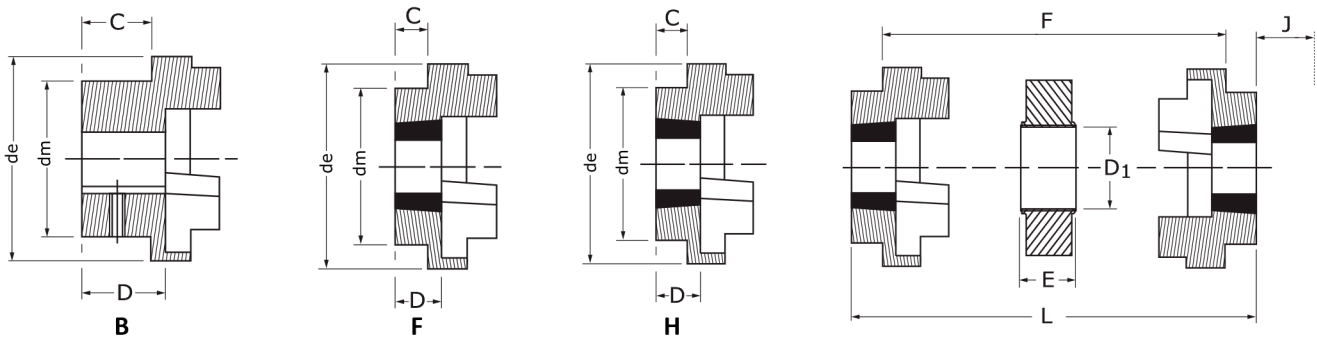
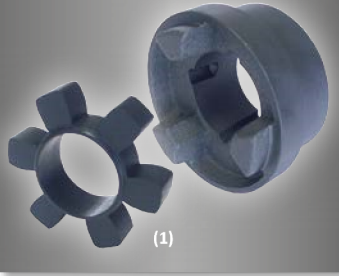
* Example of reference for a coupling with a Y type bush and Z type bush

(1) Flector in red thermoplastic elastomer with hardness of 94 Shore A or yellow with hardness of 92 Shore A



ELASTIC COUPLINGS HRC

**MATERIAL : Cast iron
EN-GJL-250 UNI EN 1561**



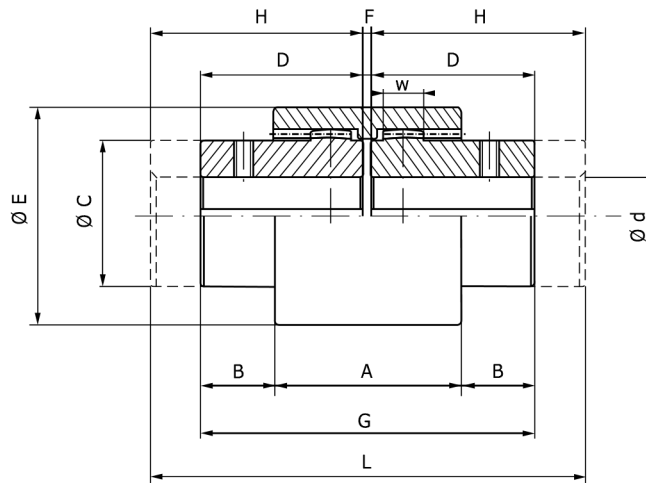
ELASTIC COUPLINGS HRC																					
Reference	Dimensions					Type F & H						Type B				Length L depending on combination			Max Speed (rpm)	Nominal Torque (Nm)	
	de	dm	D1	F	E	Bush	Bore Ø		C	D	J	C	D	Screw	Bore Ø		FF,FH,HH	FB,HB			BB
HRC070..	69	60	31	25	18	1008	9	25	20	23,5	29	20	23,5	M6	0	32	65	65	65	9100	31,5
HRC090..	85	70	32	30,5	22,5	1108	9	28	19,5	23,5	29	26	30	M6	0	42	69,5	76	82,5	7400	80
HRC110..	112	100	45	45	29	1610	14	42	18,5	26,5	38	37	45	M10	0	55	82	100,5	119	5630	160
HRC130..	130	105	50	53	36	1610	14	42	18	26,5	38	39	47,5	M10	0	60	89	110	131	4850	315
HRC150..	150	115	62	60	40	2012	14	50	23,5	33,5	42	46	56	M10	0	70	107	129,5	152	4200	600
HRC180..	180	125	77	73	49	2517	16	65	34,5	46,5	48	58	70	M10	0	80	142	165,5	189	3500	950
HRC230..	225	155	99	85,5	59,5	3020	25	75	39,5	52,5	55	77	90	M12	48	100	164,5	202	239,5	2800	2000
HRC280..	275	206	119	105,5	74,5	3525	35	90	51	66,5	67	90	105,5	M16	60	115	207,5	246,5	285,5	2300	3150

.. Precise the combination : BB, FF, HH, BF, BH, FH

Type F bushes (taper-lock coming on the inside), H (taper-lock coming on the outside) & B (pilot bore) are interchangeable.

J : dimension needed for passage of the key for assembly and disassembly of the taper lock.

(1) Black elastomer flector with hardness 90 shore A.


FLEXIBLE COUPLINGS


FLEXIBLE COUPLINGS WITH CURVED TEETH AND POLYAMID CROWN 6.6														Max Speed (rpm)	Nominal Torque (Nm)
Reference	Bore \varnothing d		Number of teeth	W	A	B	\varnothing C	D	\varnothing E	F	G	H	L		
	Nom.	Max													
GF 14 ..	6	14	20	8	37	6.5	24	23	40	4	50	40	84	14000	10
GF 19 ..	8	19	24	8	37	8.5	30	25	48	4	54	40	84	12000	16
GF 24 ..	10	24	28	8	41	7.5	36	26	52	4	56	50	104	10000	20
GF 28 ..	10	28	34	10	46	19	44	40	66	4	84	55	114	8000	45
GF 32 ..	12	32	40	10	48	18	50	40	76	4	84	55	114	7100	60
GF 38 ..	14	38	44	12	48	18	58	40	83	4	84	60	124	6300	80
GF 42 ..	20	42	50	14	50	19	65	42	92	4	88	60	124	6000	100
GF 48 ..	20	48	50	14	50	27	67	50	95	4	104	60	124	5600	140
GF 55 ..	25	55	45	16	58	25	82	52	114	4	108	65	134	4800	285
GF 65 ..	25	65	42	20	68	23	95	55	132	4	114	70	144	4000	380

.. Example of reference :
Loose part :

- GF-..N = standard bush
- GF-..L = long bush
- GF-..M = polyamid 6.6 element

Complete coupling :

- GF .. NN = with 2 standard bushes
- GF .. NL = with 1 standard bush + 1 long bush
- GF .. LL = with 2 long bushes

Technical information :

- Easy to assemble and disassemble
- Operating temperatures from -20°C to +120°C
- Silent operation
- Curved shape teeth leading to an angle, axle (± 1 mm) and radial ($\pm 2^\circ$) offset
- No maintenance
- machined bore \varnothing dH7 + JS9 keyway on request
- Material : Steel C43 UNI 7847