



PRODUCT INFORMATION

WORLD FAMOUS
BARDAHL
®

BARDAHL ON LAND SEA AND AIR

Bardahl has been a winning name in motor sport with planes, boats, motorcycles and cars for more than half a century.

It was actually in 1939, over sixty years ago that Ole Bardahl had the idea that shifted the limits of engine performance. He realised that the molecular construction of motor oils could be modified with an additive, which would make it cling to moving parts.

To lubricate, oil is splashed or sprayed against metal surfaces but being liquid drains away from even the microscopic peaks and valleys that are always present even on the smoothest of surfaces. Friction occurs together with added heat and wear.

Ordinary hydrocarbon oil molecules are electrically neutral, as there is no positive or negative charge present to hold them against the molecules in the metal.

Ole Bardahl changed all that with the discovery of 'Polar Attraction' such that these regular hydrocarbon oil molecules are combined with other base elements to alter their molecular structure. Molecules take on an electrical charge and fasten themselves tightly on any oppositely charged metal molecule.

In this way a microscopically thin, but extremely durable, film of lubrication is held magnetically in place against the metal, thereby insulating the surface against friction, heat and wear.

The Bardahl company built a motor industry business and racing reputation upon this



principle which has been used ever since by the racing champion and ordinary motorist alike to gain that winning margin of extra performance, reduced wear and longer engine life.

BARDAHL TECHNOLOGY TODAY

Constant laboratory research and vehicle testing in the field underpin Bardahl expertise. The descendants of the original formulations that now emerge from the Bardahl laboratories in Seattle, USA are high technology products designed to produce a maximum performance capability from today's more sophisticated engines both petrol and diesel.

THE FOUR BALL E.P. TEST

The most dramatic and meaningful test for lubricants is the standard Four-Ball E.P. Test, developed by Shell in the 1940s and approved by the American National Standards Institute since 1969. It effectively measures the extreme pressure properties of lubricating fluids.

During the test steel balls are checked for wear and friction under different loads and rpm. The test is run until the steel balls weld together which seldom happens when Bardahl additives are present in the test oil.



The above photograph shows the wear on 5 balls representing various different lubricants used during the test. The second ball from the left virtually unscathed, illustrates the use of Bardahl additives.



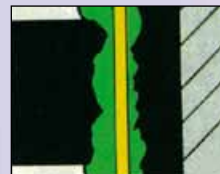
1 When magnified all metal surfaces have microscopic peaks and troughs on their surfaces.



2 High pressures can create flash temperatures, heating metals and destroying regular oil.



3 Molecular attraction between the hot bare metals can cause surfaces to tear against each other causing wear and eventual seizure.



4 Bardahl lubricants contain a unique polarised formula of tough molecules which cool metal, neutralising friction, heat



ISO CERTIFICATION

All products as supplied by Bardahl are manufactured to the highest quality levels.

Several car manufactures and importers such as Peugeot, Citroen and VW-Audi have chosen Bardahl to produce exclusive maintenance products under their own brand name.

3.1. OIL BOOSTER - TURBO PROTECT

Ref. 11103 24x300ml.

A quality performance additive to restore high-grade motor oil to top specification. Extends engine life, prevents black sludge and the malfunction of hydraulic valve lifters.

3.2 NO SMOKE

Ref. 01021 12x500ml.

Extra thick viscosity improver to prevent oil burning in high mileage vehicles thus preventing smoke emissions.

3.3 NO SMOKE + ENGINE STOP LEAK

Ref. 2117 8x473ml.

Extra thick viscosity improver with added synthetic chemistry stops exhaust smoke and restores body and pliability to dried out seals. Reduces oil leaks.

3.4 B2 OIL TREATMENT

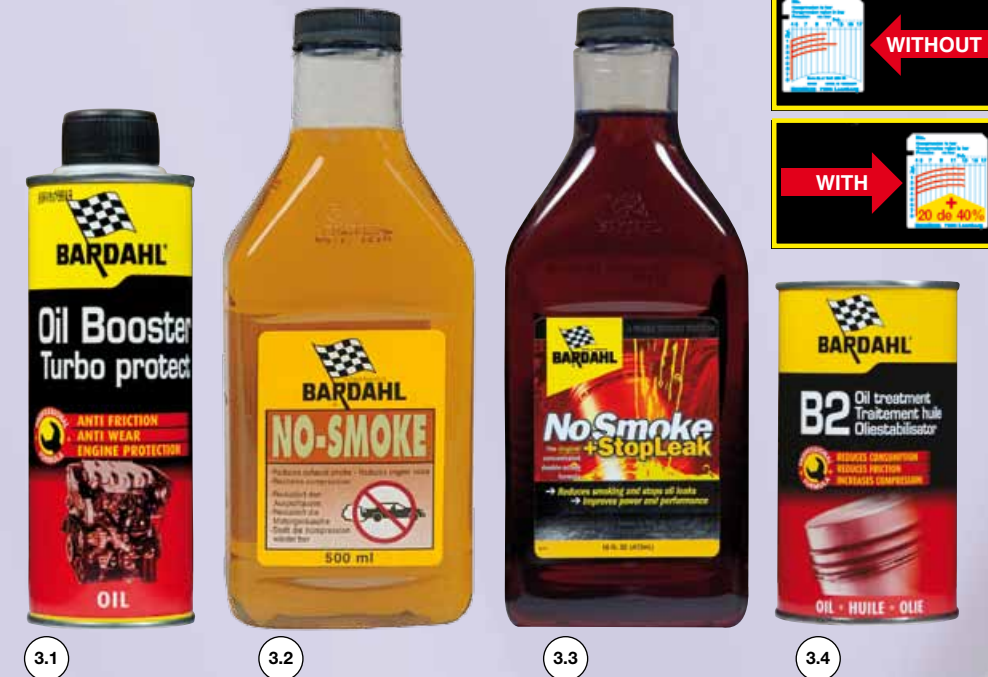
Ref. 01001 24x300ml.

Stops oil burning in worn engines. Increases compression and oil pressure. Reduces friction and wear.

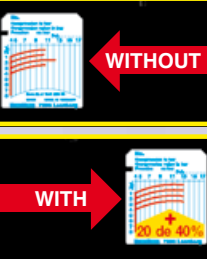
HYDRAULIC VALVE LIFTER TREATMENT

Ref. 11035 12x300ml.

A special oil additive to keep hydraulic valve lifters free from harmful deposits (oil residues, carbon, etc.) and to restore or to maintain their function. Protects valve lifters, valve spindles and camshafts against friction to extend engine life. Can be added to any type of motor oil or engine. Suitable for use in all new generation engines. (CDI, HDI, TDI, etc.)



Compressie-test



3.5 MANUAL GEAR BOX ADDITIVE (CONC. GEAR OIL ADDITIVE)

Ref. 01604 24x125ml.

Prevents differential howl transmission noise and steering squeal due to inadequate lubrication.

MANUAL GEAR BOX STOP LEAK

Ref. 1756 6x227ml.

Restores and maintains rubber oil seals helping to reduce or eliminate oil leaks. Stops internal and external oil-leaks. Can be added to any type of manual gearbox or transmission fluid.

3.6. ENGINE STOP LEAK

Ref. 11201 24x300ml.

Specially formulated crankcase additive restores and maintains rubber oil seals helping to reduce or eliminate oil leaks.

3.7 POWER STEERING STOP LEAK

Ref. 1755 6x300ml.

The product is compatible with all kinds of oil used in power steering systems or automatic transmissions requiring Dexron or equivalent, except LHM. Can be used to 'top up' reservoirs. By stopping leaks it prevents the replacement of expensive parts. Restores hardened and cracked rubber seals.

AUTOMATIC-TRANSMISSION STOP LEAK

Ref. 06018 12x473ml.

A supplement for automatic transmission fluids to stop leaks and maintain new car performance whilst you drive. Prevents the formation of varnish and gum on moving parts.





4.1 FUEL INJECTOR CLEANER
 Ref. 12109 24x300ml.
 Clears clogged injectors and inlet valves of deposits. Restores maximum performance, easier starting, smoother idling and immediate throttle response. Reduces icing.

4.2 CONCENTRATED FUEL INJECTOR CLEANER
 Ref. 12105 12x500ml.
 A new concentrated formula designed to disperse and prevent injector problems without dismantling. Suitable for the latest high pressure GDI, HPI and IDE engines. Multi-functional. Recommended for use by main vehicle manufactures.

4.3 FUEL TREATMENT
 Ref. 12009 24x300ml.
 Keeps the carburettor fuel system clean, improving engine efficiency and fuel economy.

4.1

4.2

4.3

4.4 FUEL SYSTEM PARTS CLEANER
 (Carb and Choke Cleaner)
 Ref. 60004 12x400ml.
 Cleans carburettors, automatic chokes and PVC valves. Assists with poor starting and rough idling. Cleans all parts of the fuel injection system. Improves fuel economy.

4.5 ELECTRICAL CONTACT CLEANER
 Ref. 61004 12x400ml.
 Cleans and protects all electrical contacts, removing grease, oil dust and dirt. Penetrates quickly displacing moisture and forms a non-conductive protective film.

4.6 QUICK START
 Ref. 66104 12x400ml.
 Assists the starting of petrol and diesel engines as a result of low ambient temperatures or moisture.

4.7 MOTORPLAST
 Ref. 66404 12x400ml.
 Forms a protective gloss coating on engine and components, including batteries, hoses, ignition leads and air filters etc. Protects against moisture and corrosion. Repels dirt and is quick drying.



4.4

4.5



4.6

4.7



5.1

5.2

5.3

5.5 ENGINE TUNE UP & FLUSH
 Ref. 04018 24x326ml.
 Added to oil prior to a service, cleans away existing engine deposits and prevents reformation. Frees sticky tappets and rings.

5.6 INTAKE VALVE CLEANER
 Ref. 05040 12x192ml.
 Controls intake valve deposits, keeping carburettors and fuel injectors clean.

TOP OIL
 Ref. 02451 12x1ltr. (With dosing cup)
 Prevents erratic engine performance, rough idling and power loss due to sticky inlet valves and fouled carburettors. Lubricates upper cylinder parts of the engine.



5.5

5.6



5.1 INSTEAD OF LEAD
 Ref. 12219 12x250ml. (with dosing cup)
 Protects upper cylinder area when using unleaded or low lead fuel in engines not designed for those grades. Non polluting lead free formula.

5.2 OCTANE BOOSTER
 Ref. 12309 24x300ml. Ref. 12302 12x500ml.
 Instantly increases octane rating of petrol. Improves fuel consumption and increases power. Stops engine knock. Contains no lead.

5.3 FUEL SYSTEM WATER REMOVER
 Ref. 1082 6x300ml.
 Add to petrol or diesel fuel to remove the harmful presence of water. Allows moisture to pass through the system and be removed by combustion. Prevents corrosion and is safe to use in all types of engine.



6.1 COMMON RAIL DIESEL INJECTOR CLEANER

Ref. 13205 12x500ml.
A new concentrated formula designed to disperse and prevent injector problems without dismantling. Suitable for the latest common rail high pressure HDI, CDI, TDCI and DCI engines. Multi-functional. Recommended for use by main vehicle manufactures.

6.2 DIESEL SYSTEM CLEANER

Ref. 13209 24x300ml.
For workshop or DIY use added to fuel or used specifically to clean injectors without removal.

6.3 DIESEL TREATMENT

Ref. 13102 24x300ml.
A multi functional additive that increases cetane rating improving economy, reducing smoke and engine clatter. Cleans injectors and improves low temperature flow.

6.4 DIESEL ANTIFREEZE

Ref. 02501 36x100ml.
02551 12x1ltr. (en 5, 25, 60 & 210ltr)
Overcomes cold starting problems and corrosion resulting from paraffin wax crystals, dirt or water in the diesel fuel. Cleans the fuel system and improves combustion.

SYNTHETIC DIESELUBE - UHPD

Ref. 51400 5, 25, 60 & 210ltr.
A synthetic diesel engine oil for very long drain intervals. Formulated with the latest advanced technology additives for maximum performance over extended periods. SAE 10W40 exceeds API: SL/CI-4 ACEA: E4, E5, E7. proved by MAN, Mercedes, Volvo, Scania, Renault DAF.

DIESELUBE - SHPD

Ref. 51500 5, 25, 60 & 210ltr.
High performance diesel engine oil for extended drain intervals. Meets lubrication requirements of modern, low emission diesel engines. SAE 15W40 exceeds API: CI-4, CH-4, CG-4 Suitable for SCR/EGR. ACEA: E3, E5, E7.

UNITRAC

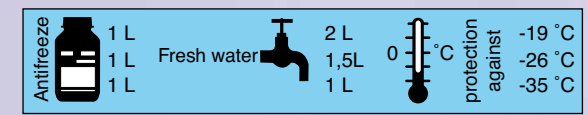
Ref. 51600 5, 25, 60 & 210ltr.
A multi-purpose oil designed for applications that combine engine lubrication with hydraulic systems, transmissions and wet brake systems. Suitable for use in farm equipment. SAE 15W30 or 10W30 exceeds API: CE/CF4, SF, GL-4 and 5.

Also available are the new generation EURO 4 and 5 motoroils with ACEA E6 and E7.

Tier	Year	CO	HC	HC+Nox	Nox	PM
Euro III diesel	2000	0.64	-	0.56	0.5	0.05
Euro IV diesel	2005	0.5	-	0.3	0.25	0.025
Japan diesel	2002	0.63	0.12	-	0.28	0.052
Japan diesel	2005	0.63	0.024	-	0.14	0.013
Euro III gasoline	2000	2.3	0.2	-	0.15	-
Euro IV gasoline	2005	1	0.1	-	0.08	-
USA EPA Tier I gasoline	1997	3.4	0.41	-	0.4	0.08
USA EPA Tier II gasoline	2004	1.7	0.125	0.02	0.08	max
Japan gasoline	2000	0.67	0.08	-	0.08	-
Japan gasoline	2005	1.15	0.05	-	0.05	-

Maximum emissions limits for passenger cars g/km (g/mile US) covered by legislation in the EU, US and Japan

Starting date	Parts (pm) g/kWh	Nitrogen oxides (Nox) g/kWh	
Euro '0'	1-10-1989	-	15
Euro 1	1-10-1992	0.35	8
Euro 2	1-10-1996	0.15	7
Euro 3	1-10-2000	0.10	5
Euro 4	1-10-2005	0.02	3.5
Euro 5	1-10-2008	0.02	2



7.1 RADIATOR STOP LEAK

Ref. 14001 24x300ml.
A fast repair for all radiator leaks forming a tough, long lasting seal. Will prevent future leaks. Compatible with all types of anti-freeze and will not harm rubber hoses or gaskets. Safe in aluminium engines.

7.2 RADIATOR FAST FLUSH

Ref. 14010 24x300ml.
Removes oily scum and coolant gel, loose rust and deposits caused by anti-freeze that would prevent efficient cooling. Stops overheating. Safe to use with aluminium engines.

7.3 ANTIFREEZE

Ref. 83200 1, 5, 25, 60 & 200ltr.
A high quality corrosion inhibiting antifreeze for use in all engines cast iron or aluminium. Blended from the highest quality ethylene glycol with special anti-corrosion and low silicate additive package. Exceeds requirements of leading car manufacturers.

7.4 LONG LIFE COOLING FLUID -38°C G12+

Ref. 83300 1, 5, 25, 60 & 210ltr.
A high performance, ready to use cooling fluid designed to provide maximum protection against rust, scale, sludge as well as preventing overheating. This low silicate cooling fluid meets highest requirements of ASTM D-3306/ 4985, SAE J-1034, VW/AUDI/SEAT/SKODA TL774-D/F, Ford WSS-M97B44-D, GM 6277M, Citroën, DC MB-325.3, Jaguar WSS-M97B44-D, Peugeot, Landrover, Porsche TL-744D, Cummins IS & N14, DAF, Detroit Diesel, Deutz, MAN 324 TYP SNF, MB 325.3, MTU MTL 5048, Renault 41-01-001/S Type D, Scania TB 1451/TI 2-98 08 13 TB, Volvo 014 GS 17009.

7.5 COOLANT -38°C

Ref. 83000 1, 5, 25, 60 & 210ltr.
A ready to use blend of anti-freeze and de-ionised water designed to provide outstanding protection in summer and winter. Keeps engines cool and radiators clean and free flowing. This low silicate coolant meets the

requirements of most engine manufacturers. ASTM D-3306/ 4985, SAE J-1034, AFNOR NFR 15-601, BS 6580/92, JIS K2234, MTU MTL5048, GM QL 130100, VAG TL-774C, BMW, DC MB-MS-717000, Fiat 9.55523, Landrover, Saab 6901 599, Cummins 85T8-2, MAN 324 TYP NF, Volvo 1286083/002.

AIR BRAKE ANTIFREEZE

Ref. 84100 1, 5, 25, 60 & 200ltr.
Protects braking systems against damage caused by freezing. Lubricates moving parts, valves and seals. Safe on rubber, plastic and metal parts. Contains no methanol.



Antifrost	Water	Protection
1 part	3 parts	-10°C
1 part	2 parts	-16°C
1 part	1 part	-25°C
2 parts	1 part	-34°C
3 parts	1 part	-40°C



8.1 ANTI FROST
 Ref. 62202 24x250ml.
 62205 24x500ml.
 62251 12x1ltr. en 5, 25, 60, en 200ltr.
 Add to water. Contains anti-freeze and cleaning agents for effective use of the window washer system during winter months.

8.2 DE-ICER
 Ref. 4544 12x300ml.
 Effectively removes ice from windows and door locks. Prevents re-misting. Safe to use on rubber and paintwork.

8.3 TURBO WASH CONCENTRATE
 Ref. 62902 12x250ml.
 A highly concentrated cleaning product to overcome reflective glare caused by insects, dirt, oil, grease and silicone. Suitable for all vehicles with steeply raked windshields.

8.4 WINDSHIELD CLEANER (ANTI-INSECT)
 Ref. 62102 48x250ml.
 An all year round cleaning concentrate, which effectively removes insects, road grease, oil and silicone residue from windshields.

8.5 GLASS CLEANER
 Ref. 62005 12x500ml.
 Effectively removes insects, dirt and other foreign matter from glass surfaces. Will also clean chrome and enamel.

8.6 WHEEL CLEANER
 Ref. 60205 12x500ml.
 Specially formulated for the efficient and easy cleaning of light alloy wheels..



8.7 PRE-CLEANER
 Ref. 60105 12x500ml.
 Removes stains from engine and car body caused by exhaust fumes, oil, tar and insects. Will not affect paintwork, chrome, aluminium or rubber.



Bardahl motor oils meet or exceed the highest specifications and are registered with car-manufacturers such as; BMW, Mercedes and Volkswagen, also the American Petroleum Institute (API).
 For more information please refer to the individual product information sheets.



XTC SYNTRONIC 0W40
 Ref. 51055 4x5ltr.
 A new generation high quality full synthetic motor oil, offering the fastest lubrication available. Formulated with the latest additives to provide the ultimate in engine lubrication
 API Service: SL-CF ACEA: A3, B3, B4.

9.1 XTC SYNTRONIC 5W40
 Ref. 51100 1, 5, 25, 60 & 210ltr.
 A full synthetic oil formulated to meet the increasingly severe requirements of modern engines. Enables lower fuel consumption and extended oil drain intervals. Reduces wear to ensure longer engine life. API Service: SL/CF ACEA: A3, B3, B4.

9.2 XTC SYNTHETIC 10W40
 Ref. 50000 1, 5, 25, 60 & 210ltr.
 Developed for the lubrication of heavy-duty engines. A fortified synthetic oil for added protection at extreme temperature, both high and low. Available as a 15W50 grade subject to special request API Service: SL/CF- ACEA: A3, B3, B4.

Also available XTC Synthetic 15W50
 Ref. 50400 1, 5, 25, 60 & 210ltr.

9.3 XTC TURBO
 Ref. 50100 15W40
 50500 20W50 1, 5, 25, 60 & 210ltr.
 Developed for modern petrol and diesel engines with or without turbo chargers. An exceptional resistance to high temperature and provides outstanding protection against wear and oxidation. 20W50 grade is suitable for all classic cars. API Service: SJ/CG-4 ACEA: A3, B3, B4



RACING MOTOR OILS
 Two motoroils formulated for high performance competition engines, off road, rally and circuit racing. Offers maximum protection in extreme operating conditions.
 1.XTC Synthetic Racing 15W50 ref.50900
 2.INDY Syntronic Racing 10W60 ref.50200
 Both available in 5,25 and 60ltr.



SPECIAL "OEM" MOTOROILS

XTC SPECIAL M.O F 5W30
 Ref. 50800 1, 5, 25, 60 & 210ltr.
 Special motor oil meeting Ford specs M2C913A+B API Services: SJ/CF ACEA: A1, A5-B1, B5.

XTC 50501 SYNTHETIC TURBO 5W40
 Ref. 51700 1, 5, 25, 60 & 210ltr.
 High performance semi synthetic motor oil for passenger cars, light trucks, petrol, diesel and lpg. Including turbo charged and VW TDI engines. API Services: SM/CF ACEA: A3, B4, C3 Ford WWS-M2 C917A MB229.3 VW500.00/505.00/505.01 Renault RN0700 RN0710 BMW LL-04

XTC SYNTRONIC LA 5W30
 Ref. 50300 1, 5, 25, 60 & 210ltr.
 High performance full synthetic longlife motoroil for Mercedes and BMW. Reduces fuel consumption and maximum protection during cold starts. API Services: SM/CF ACEA: A3, B4, C3 MB 229.31 VW 502.00/505.00 BMW LL-04

XTC SYNTHETIC LSP 5W30
 Ref. 51300 1, 5, 25, 60 & 210ltr.
 Special synthetic motor oil for Volkswagen, Audi, BMW and Mercedes engines. This low SAPS* motoroil is suitable for all types of modern automobile engines, especially high performance gasoline and diesel engines. Formulated to be compatible with the latest Diesel Particulate Filter (DPF's) and Gasoline Catalytic Converters (CAT's). ACEA: A3, B4, C3 Acc.VW 504.00/507.00, MB 229.51en BMW LL-04

*SAPS = Sulphated Ash, Phosphor and Sulphur

XTC SYNTRONIC GM 5W30
 Ref. 51800 1, 5, 25, 60 & 210ltr.
 Special full synthetic motor oil for the latest longlife engine technology with the extended drain intervals required by GM-engines. 30.000 km for gasoline engines. 50.000 km for diesel engines. API Services SL/CF ACEA: A3,B3,B4. GM-LL-A-025 GM-LL-B-025.





10.1

10.1 XTG SYNTHETIC GEAR OIL

Ref. 52000 75W90
52500 75W90LS
500ml, 1, 5, 25, 60 & 210ltr.

A synthetic oil formulated to meet the severest requirements of modern gearboxes and transmissions. Extreme anti-wear properties make gear changing easier giving better and faster lubrication at both high and low temperature. * For limited slip systems API Service: GL-5.

10.2 XTG GEAR OIL

Ref. 52100 80W90/GL5
Ref. 52200 75W/80 PSA GL4+
Ref. 52300 85W/140/GL5
Ref. 52400 80W90/GL4
500ml, 1, 5, 25, 60 & 210ltr.

A premium quality gear oil formulated to exceed the requirements of automotive, motor cycle, truck, tractor and off road heavy-duty equipment. Available in three grades. API Service: GL-5.

GEAR BOX STOP LEAK

See page 3.

10.3 ATF DII AUTOMATIC TRANSMISSION FLUID

Ref. 52800 1, 5, 25, 60 & 210ltr.
A high quality automatic transmission fluid formulated for stop/go conditions and high stress motorway driving. Meets the specification required by all international vehicle and transmission manufacturers. According Specifications: Dexron DII.



10.5



10.6

10.7



10.3

ATF DIII AUTOMATIC TRANSMISSION FLUID

Ref. 52700 1, 5, 25, 60 & 210ltr.

A new improved transmission fluid recommended for use in all engines that require DEXRON III (including DII, IIE or Mercon). Specially designed for all modern automatic transmissions.

AUTOMATIC TRANSMISSION STOP LEAK

See page 3.

10.4. LHM HYDRAULIC FLUID

Ref. 52900 1, 5, 25 & 60ltr.

Mineral based fluid for Citroen hydraulic systems, power steering and braking systems.

US-POWER STEERING FLUID

Ref. 5712 12x12oz/355ml.

Designed for power steering systems of GM, Ford, Chrysler, Jeep and others. Helps prevent wear and will keep seals soft and pliable. Stops squeaks, prevents leaks and insures smooth, quiet operation.

EU-POWER STEERING FLUID

Ref. 53151 12x1ltr.

53155 4x5ltr.
A special universal hydraulic fluid with high viscosity-index for power-steering units (4 x 4), lever control systems and shock absorbers. Acc. DIN 51524T2, ISO 7308, VW TL 52146, Peugeot B 71 2718, Volvo STD 1273,36.

POWER STEERING STOP LEAK

See page 3.

10.5 MULTI SERVICE WHEELBEARING GREASE

Ref. 54701 24x100gr.

54705 12x500gr.

A multi purpose grease for maximum protection against rust and corrosion. A blend of lithium soap and high grade mineral oil containing friction and wear reducing additives.

10.6 SYNTHETIC BRAKE FLUID DOT 4

Ref. 53500 250ml, 1, 5 & 60ltr.

A synthetic based brake fluid with high boiling point. Suitable for all hydraulic disc and drum braking systems in cars, trucks, buses and other vehicles.

10.7 SYNTHETIC BRAKE FLUID DOT 5.1

Ref. 53600 250ml, 1 & 5ltr.

A full synthetic brake fluid with very high wet and dry boiling point. Recommended for use in ABS braking systems and competition.

BRAKE FLUID DOT 3

Ref. 53455 4x5ltr.

A brake fluid suitable for vehicles where DOT 3 specification is recommended. Suitable for both disc and drum brake systems, fully compatible with all DOT3 and DOT 4 fluids.

ATF DIV UNIVERSAL AUTOMATIC TRANSMISSION FLUID

Ref. 52600 5, 25, 60 & 210 ltr.

Universal automatic transmission fluid for the generation automatic gear boxes. Dexron II-D, II-E, III en Mercon.



11.1



11.2



11.1



11.1



11.1 BARRIER CREAM

Ref. 60501 24x100ml.

60551 12x1ltr. (dispenser available)

Apply prior to commencing activity. Protects hands and makes cleaning easier.

11.2 HANDCLEANER

Ref. 60301 24x100gr.

60305 12x500gr.

60351 10x1ltr.

60353 6x3 ltr.

60381 1x10ltr.

Effectively cleans and thoroughly protects the skin. Recommended for workshop and DIY use. Will remove stubborn stains such as tar, ink, oil, dye, adhesive and oil based paints. Contains lanolin to protect the skin. Tested by the health Clinic of the University of Dusseldorf, Germany. Dispensers available.

11.3 FOAM CLEANER

Ref. 61305 12x500ml.

Removes difficult marks including nicotine stains from upholstery, fabric, plastic, carpets and floor coverings. Equally suitable for glass, metal, concrete and painted surfaces.



11.3



11.4

11.4 ENGINE CLEANER

Ref. 61204 24x400ml.

Plus 5, 25, 60 en 210ltr.

A solvent-based degreaser removes oil, grease and dirt etc from the exterior surfaces of engines, motorcycles and machinery. Will not harm distributor leads or paintwork.

11.5 CAR SHAMPOO "WASH AND SHINE"

Ref. 61505 24x500ml, 5 & 25ltr.

Cleans and protects exterior metal surfaces of cars and other motor vehicles.



11.5





12.1

12.1 SUPER SPRAY

Ref. 68204 24x400ml.

Penetrates and loosens rusted parts and protects against corrosion problems. Displaces moisture and assists cold starting in damp conditions.

12.2 COCKPIT SPRAY

Ref. 66004 24x400ml.

Beautifies, penetrates and protects all vinyl, rubber, imitation leather, printed and plastic surfaces dulled by exposure, dampness and pollution.

12.3 SILICONE SPRAY LUBE

Ref. 66304 24x400ml.

Lubricates and prevents squeaks in many automotive, household and marine applications. Safe to use on electrical parts. Insulates against rust and corrosion. FDA-APPROVED LUBRICANT food-and Pharma grade product.



12.2



12.3

13.1 RED PRIMER GREY PRIMER

Ref. 64004 12x400ml.

Ref. 64704 12x400ml.

A quick drying base coat. Gives all surfaces a durable protective cover in preparation for re-spraying with any colour.

13.2 RACING BLACK

Ref. 64104 12x400ml.

A quick drying matt black paint that gives all surfaces a sporting look and protects against reflected sunlight. Can also be used as a control paint for body repairs.

13.3 800°C HEAT PROOF PAINT

Ref. 64204 12x400ml.

A quick drying matt black paint resistant up to 800°C. Gives all surfaces a sporting look and protects against reflection from sun and light.

ZINC PRIMER

Ref. 72104 12x400ml.

This product offers long lasting protection against rust and corrosion, with very high resistance to extreme weather conditions, salt and water. Adheres well to all metals. Can be used for repairs to damaged areas previously treated, welding and as a primer. Dries quickly and is economical in use. Very high Zinc content.



13.1



13.2



13.3



12.4



12.5



12.6



12.7

12.4. CAR MAKE UP

Ref. 66003 12x300ml.

Restores and beautifies rubber, vinyl, leather and all other types of surface. Protects against conditions that cause surfaces to become drab, cracked, broken and hard.

12.5. CREAM CAR WAX

Ref. 67103 12x300ml.

Carwax for new and nearly new paintwork and chrome. A unique blend of synthetic polymers and premium carnauba wax delivers longlasting high gloss. Incredible protection against uv-rays, oxidation, corrosion and surface degradation.

12.6. PAINT CLEANER

Ref. 67303 12x300ml.

Cleans and restores old and dull paintwork. Removes scratches, dirt and old surface paint. Enhances colour.

12.7. SHOWROOM SHINE SPRAY

Ref. 67004 12x400ml.

For the long lasting protective shine of car paints, chrome, copper. Also for imitation leather and other plastics. For cars, trucks, motorcycles, boats, caravans, garden, furniture etc. Simple to use; spray, wipe, clean and buff to a high gloss finish.



13.4



13.5



13.6



13.7

13.4 CLEAR VARNISH

Ref. 64304 12x400ml.

A clear varnish that dries to form a strong protective gloss coating and protects against rust and corrosion. Suitable for use on light alloy wheels, and metal surfaces.

13.5 ALUMINIUM WHEELPAINT

Ref. 64604 12x400ml.

A quick drying aluminium coloured lacquer that gives wheels and other surfaces a 'new look'. Protects against corrosion and road salt treatments during the winter.

13.6 SPRAY PAINT

Ref. 64804 12x400ml. Black
64904 12x400ml. White

A quick drying paint that gives all kinds of surface a 'new look'. Dries quickly to form an attractive durable finish. For interior and exterior use in the car, home and office.

13.7 PLASTIC AND VINYL LACKSPRAY

Ref. 65104 12x400ml. Black
65204 12x400ml. Grey

A quick drying paint for bumpers, spoilers and other plastic and vinyl parts. No special pre-treatment required.





14.1 UNDERCOATING

Ref. 63005 12x500ml.
63051 12x1ltr.
Protects car under-bodies from corrosion, rust and abrasives, providing a durable, waterproof coating.

14.1b UNDERCOATING WAX

Ref. 63751 12x1ltr.
A wax based protective coating for car under-bodies. Provides maximum protection against corrosion, rust and abrasives.

14.2 INTERCOATING ML-AMBER

Ref. 63105 12x500ml.
63151 12x1ltr.
An excellent protective coating for use on interior and exterior automotive panels. Has many additional uses in shipping and industry. Will protect tools and chrome from corrosion.

14.2b INTERCOATING - WAX

Ref. 63605 12x500ml.
63651 12x1ltr.
A wax-based protective coating for use on new interior and exterior automotive parts. Penetrates and remains flexible over a long period.

14.3 BODY COATING

Ref. 63205 12x500ml.(black)
63251 12x1ltr.
63305 12x500ml.(grey)
63351 12x1ltr.
63451 12x1ltr. (white)
A durable coating for car body parts protecting against vibration and rust. Resistant to heat, water and abrasives.

BODY SEALER

Ref. 93851 12x1kg.
A fast drying brush application seam sealer for coachwork. Easy to apply, will not string and results in an original OEM finish. Remains flexible and is easy to respray.

14.4 EASY GASKET

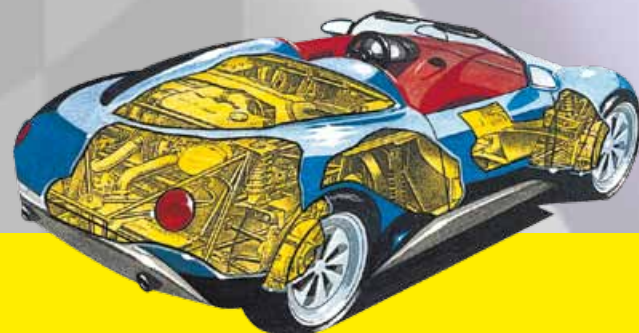
Ref. 69001 12x120gr.
Replaces all kind of seals and gaskets. To seal light housings, cable channels, hose connections and windscreens. Resists most chemicals. Temperature range -50°C. to +260°C. Short-term up to +300°C. Perfect adhesion on rubber, metal, painted wood. Glass, ceramics, plastics, etc

14.5 EXHAUST ASSEMBLING PASTE

Ref. 66501 12x170gr.
Easy to use assembly and sealing paste for the exhaust system, joints and fittings. Stops leaks and prevents fumes.

EXHAUST REPAIR PASTE

Ref. 66502 12x200gr.
For long lasting repair of holes and leaks in exhaust systems. Does not contain asbestos.



SERVICE PRODUCTS

QUICK POLISH HEAVY

Ref. 67751 6x1ltr.
An excellent wax for the regeneration and protection of used vehicle paintwork. Restores faded colour to reveal the original. Does not leave chalk dust residue on dark colours.

QUICK POLISH MEDIUM

Ref. 67651 6x1ltr.
A perfect wax for a quick and easy turn around. Gives a deep gloss finish. Cleans and protects paintwork from weather and traffic grime.

QUICK POLISH GLASS

Ref. 67851 6x1ltr.
Perfect for 'streak free' cleaning of vehicle windows and windscreens. Removes wax residue and leaves no chalk marks on rubber or paint. Contains no wax or silicone.

QUICK RUBBING COMPOUND 1 en 2

Ref. 67451 (1) 6x1ltr.
67551 (2) 6x1ltr.
A fine (1) and medium (2) rubbing compound for use on modern vehicle paintwork. Removes small defects such as scratches, paint runs, heavy over-spray or dust contamination. Restores paint surface to an original high gloss finish.

HEAVY DUTY CLEANER

Ref. 61455 4x5ltr. 61483 30ltr.
A cleaning concentrate designed to clean and degrease badly stained surfaces. Removes dirt and scale plus mineral, vegetable and animal greases. Harmless, non-aggressive and mild for the hands.

MOTOR CLEANER M-1800

Ref. 61855 4x5ltr. 61882 25ltr.
A biodegradable concentrate mixed with water for use instead of flammable solvent degreaser. Will remove oil and grease from engines and machine parts.

TRUCK CLEANER

Ref. 61655 4x5ltr.
61682 1x25ltr.
A powerful cleaner for vinyl covers and sides of trucks. Removes traffic grime and other heavy contamination. The cleaner is highly concentrated and can be used hot or cold in both hard and soft water areas.

QUICK TAP

Ref. 73804 12x400ml.
For high performance in tapping, cutting, milling and drilling of metals from alloys to stainless steel. Reduces heat and corrosion, allows higher speeds, improves surface finish and lengthens tool-life. Non-water soluble oil lubricant.

GASKET & PAINT STRIPPER

Ref. 77004 12x400ml.
Gasket & Paint Stripper is a highly active remover of old gaskets and carbon deposits. It will remove most cellulose, acrylic, alkyd, p/u alkyd, bitumastic and vinyl paints from wood, metal, GRP, ceramic and many other surfaces.

TEFGREASE WHITE +PTFE

Ref. 74504 12x400ml.
A highly quality white lithium grease with E.P. properties. Contains a very finely graded PTFE and a mixture of mineral and synthetic oil. Protects against moisture and rust. Water resistant up to 90°C. Reduces friction and wear. Provides lasting lubrication to all moving parts. Sprays as an oil, but sets like grease.

BELT DRESSING

Ref. 79404 12x400ml.
Eliminates 'squeal' from vehicle fan belts. Lengthens drive belt life. Prevents cracking and increases efficiency as a result of reduced slippage. Improves grip and restores flexibility.

METALPLAST

Ref. 93002 12x250gr. Ref.93052 8x2kg.
A universal polyester paste for all metals including galvanised or zinc-coated aluminium. Will repair surface damage to metal, polyester and wood. Excellent adhesion with a short drying time. Suitable for use on cars, boats and in the construction industry.

FIBERPLAST

Ref. 93102 12x250gr.
93151 8x2kg.
A glass fibre reinforced polyester paste for plugging small holes and strengthening rusty or corroded parts of coachwork without the need of a fibreglass mat. Resists shock and vibration.

SCREENBOND MS97

Ref. 97802 12x290gr.
Bonding agents for the fitting of all types of vehicle glass. MS97 Dual Airbag tested acc. FMVSS212.

TYRE STOP LEAK + INFLATOR

Ref. 66704 12x400ml.
Instantly repairs and inflates punctured tyres of cars, motorcycles, caravans and trailers without removing the wheel. For both tubed and tubeless tyres.

MULTI PARTS AND BRAKE CLEANER

Ref. 78106 12x600ml.
Ref. 78155 4x5ltr.
A safe remover of grease, oil and other contaminants. Cleans without the need to disassemble. Suitable for use on electrical parts, brake assemblies, clutch discs etc. Leaves no residue.

AIRCON FOAM CLEANER

Ref. 61302 12x250ml.
Removes unwanted smells and cleans air conditioning systems in a few seconds. Eliminates and destroys bacterium and grim. Prevents repeat build up of bacteria over extended periods.

THREADLOCKS

THREADLOCK T142

Ref. 97001 12x50ml.
Locks all threads of screws, nuts and bolts up to M36.

THREADLOCK T171

Ref. 97011 12x50ml.
Locks, nuts, bolts and heavy duty fasteners.

RETAINER R138

Ref. 97021 12x50ml.
Permanent
For permanent assembly of bearings, pulleys, gears, etc. Gap filling of 0,05-0,2 mm.

SUPER GLUE

Ref. 98001 10x20ml.
Is a cyanoacrylate instant adhesive which bonds a wide variety of materials including plastic, wood, cardboard, leather, etc. in just a few seconds.

METAL REPAIR STICK

Ref. 96501 12x130gr.
Pliable steel used for any quick repair and bonding of metal parts.



For additional 'Service Products' please refer to our separate brochure or individual Product Information Sheets.



16.1 VBA SYNTRONIC TWO STROKE MOTOR OIL

Ref. 55851 12x1ltr.
A 100% Synthetic two-stroke motor oil for heavy-duty applications under the most severe conditions. Prevents scuffing and sticking rings. This premixed oil also suitable for oil injection systems Piaggio: SI, TISI, JASO:FC (Low Smoke) Also for snowmobiles (down to -54°C).

16.2 VBA 100 SYNTHETIC TWO STROKE MOTOR OIL

Ref. 56051 12x1ltr.
A high performance synthetic based two-stroke motor oil for normal and racing applications. Controls carbon and varnish build up. The exceptional film strength makes lean ratios possible with low smoke and high protection. API/CEC: TC+, JASO: FC (Low Smoke).

16.3 VBA SYNTHETIC SCOOTER TWO STROKE MOTOR OIL

Ref. 55951 12x1ltr.
A synthetic based low-smoke two-stroke oil for scooter engines. Meets the latest requirements of all leading scooter manufacturers. Prevents spark plug fouling and carbon build-up. Suitable for pre-mix and oil-injection systems. API/CEC: TC+, ISO: L-EGC, Piaggio: SI, TISI, JASO: FC (Low Smoke).

16.4 XTSI TWO STROKE MOTOR OIL

Ref. 56151 12x1ltr.
A two-stroke oil for fuel mix and injection systems. Specially designed for smaller air-cooled two-cycle engines. Reduces piston scuffing. Controls carbon and varnish deposits. Minimises plug fouling. API/CEC: TSC-3 (TC), ISO: L-EGB, JASO: FB

16.5 VBA SYNTRONIC RACING TWO-STROKE MOTOR OIL

Ref. 56251 12x1ltr.
A fully synthetic two-stroke racing motor oil for maximum engine performance under the severest of racing conditions. Not pre-diluted. Do not use in oil injection systems. For competition racing engines, motorcross and go-karts etc SAE50 - API/ CEC: TC+, ROC-Yamaha engine test.

SNOWMOBILE OIL

Ref. 56651 12x1ltr.
A low-temperature two stroke oil, formulated with the latest anti-scuff and anti-wear ingredients for superior lubrication. Cleans power valves. Reduces piston scuffing, controls carbon and varnish build-up providing more power. Quicker starting, greater fuel economy. Minimizes plug fouling and offers a superior film strength. Can be used down to -38 °C.

16.6 FOAMY CHAIN LUBE

Ref. 57502 24x200ml.
57504 24x400ml.
A unique product to penetrate and lubricate all types of chain, with or without O rings. Maximum protection against wear, rust and corrosion.

WHEELBEARING GREASE

Ref. 54701 24x100gr.
54705 12x500gr.
A multi purpose grease for all kinds of bearings, cables, linkages, and conductors etc. Adheres to metal surfaces and is water-resistant. Protects against rust and wear.



17.1 17.2 17.3 17.4 17.5

17.1 XTM SYNTRONIC 10W40

Ref. 55400 1, 5, 25 & 60ltr.
100% synthetic 4-Stroke motoroil for heavy duty motorcycle applications. Provides maximum engine-protection under all climatic and operating conditions. Also for wet clutches. API SG, JASO: MA.
Also available in 15W50.

17.2 XTM SYNTHETIC 10W40

Ref. 55000 1, 5, 25, 60 & 210ltr.
A high-grade synthetic based four-stroke oil developed for high-powered motor cycle engines. The unique additive package offers extreme protection against thermal and viscosity breakdown, cylinder scuffing and the formation of high temperature deposits. Available as a 15W50 grade subject to special request. API: SG, JASO: MA.

17.3 XTM MULTIGRADE 10W40

Ref. 55200 1, 5, 25, 60 & 210ltr.
A modern multigrade oil, which meets the requirements of present day four-stroke, engines. Made from high-grade base oil offering superior lubrication in motorcycle engines, transmissions and clutches.

XTM MULTIGRADE 20W50

Ref. 55300 1, 5, 25, 60 & 210ltr.
A special multigrade motorcycle oil to meet the particular requirements of selected four-stroke engines. API: SG
Also available as a SAE50/60 variant for Harley Davidson motorcycles.
Ref. 55600 5, 25 & 60ltr. API Service: SF

17.4 XTF FORK OIL

Ref. 56500 500ml, 5, 25 & 60ltr.
A high quality shock absorber oil for superior damping under the severest of conditions (racing and touring). Protects against corrosion and reduces leaks. Available viscosity 2,5W to 20W.(2,5/5/7,5/10/15/20)

XTG SYNTHETIC GEAR OIL 75W90

Ref. 57000 500ml, 5, 25 & 60ltr.
A high performance, synthetic based gear oil developed for maximum anti-wear performance. The unique formula offers excellent thermal stability for new generation motorcycles engines, race and road.

XTG GEAR OIL 80W90 EN 75W

Ref. 57100 80W90 500ml, 5, 25 & 60ltr.
57200 75W 500ml, 5, 25 & 60ltr.
An extreme pressure gear and transmission oil for severest conditions of competition and road use. Offers excellent anti-friction and anti-wear characteristics.

17.5 MOTOR & BIKE CLEANER

Ref. 58000 500ml, 5 & 25ltr.
A multi purpose powerful cleaner used to remove all kinds of dirt. Will dislodge flies and insects from paintwork, chrome or glass.

17.6 SUPER OUTBOARD 2-STROKE MOTOR OIL

Ref. 56300 1, 5, 25 & 60ltr.
A complete two-stroke motor oil for air and water-cooled two-cycle engines, outboards, power mowers, chain saws, motorcycles and auxiliary power units. Burns without ash deposits and reduces plug fouling. BIA - NMMA Certified: TC-WIII and API/CEC: TSC-4 (TD), JASO: FB.

17.7 POWER TS SYNTRONIC

Ref. 56400 1, 5, 25 & 60ltr.
A race proven full synthetic watersport two stroke oil. Blended for environmentally vulnerable applications and for the requirements of Bombardier-Rotax engines. Provides ultimate in low ash, smokeless, ant-scuff and anti-wear protection. Cleans power valves. Biodegradable lubricant. NMMA:TC-W3 API/CEC:TSC-3 (TC) TSC-4 (TD) JASO:FB.

Also available as four stroke Onboard and Outboard marine engines.



17.6 17.7



16.1 16.2 16.3 16.4 16.5



16.6



BIO PRODUCTS SUMMARY OF ADVANTAGES

- Biodegradable products according to test CEC-L-33-T-82 are required to breakdown by 90% within 3 weeks of environmental exposure.
- Low toxicity.
- High Flashpoint.
- High viscosity index.
- Superior lubricity.

18.1 BIO CHAIN LUBE

Ref. 57804 24x400ml.
57851 12x1ltr.

A scientifically formulated lubricant to penetrate all types of chain. Prevents rust and corrosion and repels water. Contains biodegradable lubricants.

BIO HYDRAULIC OIL H2268

Ref. 58500 5, 20, 60 & 210ltr.

A biodegradable fluid for use in the hydraulic systems of agricultural equipment and other machinery where there is pollution risk to the environment.

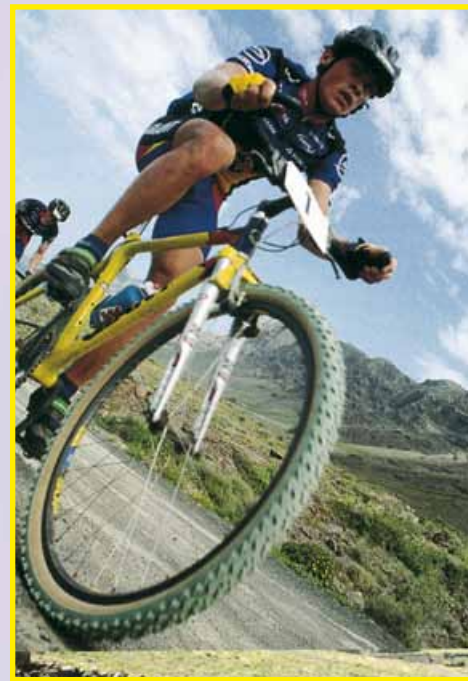
BIO SYNTHETIC GREASE

Ref. 59300 400gr, 5 & 20kg.

A biodegradable multi- purpose grease for bearings and other components. Offers excellent protection against corrosion. Is water repellent and protects against wear and adheres to metal surfaces.



18.1



18.2 BIO CYCLE CHAIN LUBE

Ref. 57802 24x200ml.

A scientifically formulated lubricant to penetrate all types of chain. Prevents rust and corrosion and repels water. Made of biodegradable lubricants.

18.3 MOTOR&BIKE CLEANER

Ref. 58005 24x500ml.

An easy to use cleaner for racing, mountain, hybrid and city bikes. Spray on and rinse off with water. Cleans instantly and protects against rust.

18.4 FOAMY CHAIN LUBE – CYCLE

Ref. 57702 24x200ml.

A scientifically formulated synthetic chain lubricant to penetrate and lubricate all types of chains, with or without O-rings. Long lasting protection against wear, rust and corrosion.

18.5 PRECISION OIL

Ref. 53001 24x100ml.

An ideal lubricant for all moving parts of bicycles such as Derailleur gears, cables etc. Suitable for office equipment, gardening tools, sewing machines, locks, hinges and guns etc.



18.2

18.3

18.4

18.5

PROMOTIONAL RANGE

Bardahl can be promoted in various different ways. Many articles are available:

- decals
- illuminated signs
- metal display-racks
- carton counter-displays
- flags
- banners
- pens
- t-shirts, caps and jackets

If you require more information about our activities or are interested in our promotional items please do not hesitate to contact us.





WORLD FAMOUS
BARDAHL



BARDAHL MANUFACTURING CORPORATION

1400 N.W. 52nd Street P.O. Box 70607
Seattle, WA 98107- 0607 U.S.A.
Tel. +1 206 783-4851 Tx. 910-444-2016
Fax +1 206 784-3219
website: www.bardahl.com

**BARDAHL EUROPE
Town Hall Exchange**

Castle Street FARNHAM, GU9 7ND
United Kingdom - tel. +44 1252 720625
fax +44 1252 720626
email: enquiry@bardahleurope.com
website: www.bardahl.com

BARDAHL NL (Export Division)

Maxwellstraat 41, Ind. Area West
NL-3316 GP Dordrecht - The Netherlands
tel. +31 78 6512322 - fax +31 78 6174848
email: info@bardahl.nl
website: www.bardahl.nl

Albania
Angola
Argentina
Australia
Austria
Barbados
Belgium
Bermuda
Bolivia
Bosnia
Brazil

Canada
Chile
China
Colombia
Costa Rica
Croatia
Cyprus
Czech Republic
Denmark
Dominican Republic
Egypt
El Salvador
Equador
Estonia
Fiji
Finland
France

Germany
Greece
Guatemala
Guyana
Haiti
Herzegovina
Honduras
Hong Kong
Hungary
Iceland
India
Indonesia
Ireland
Israel
Italy
Ivory Coast
Japan
Korea (Republic of)
Latvia
Lebanon
Liechtenstein

Lithuania
Luxembourg
Macedonia
Malaysia
Malta
Mexico
Monaco
Morocco
Netherlands
New Caledonia
New Zealand
Nicaragua
Norway
Panama
Paraguay
Peru

Philippines
Poland
Portugal
Puerto Rico
Romania
Russia
San Marino
Singapore
Slovakia
Slovenia
South Africa
Spain
Sri Lanka

Serbia
Surinam
Sweden
Switzerland
Thahiti
Taiwan
Thailand
Trinidad and
Tobago
Tunisia

Turkey
U.S.A.
United Kingdom
Uruguay
Venezuela
Vietnam