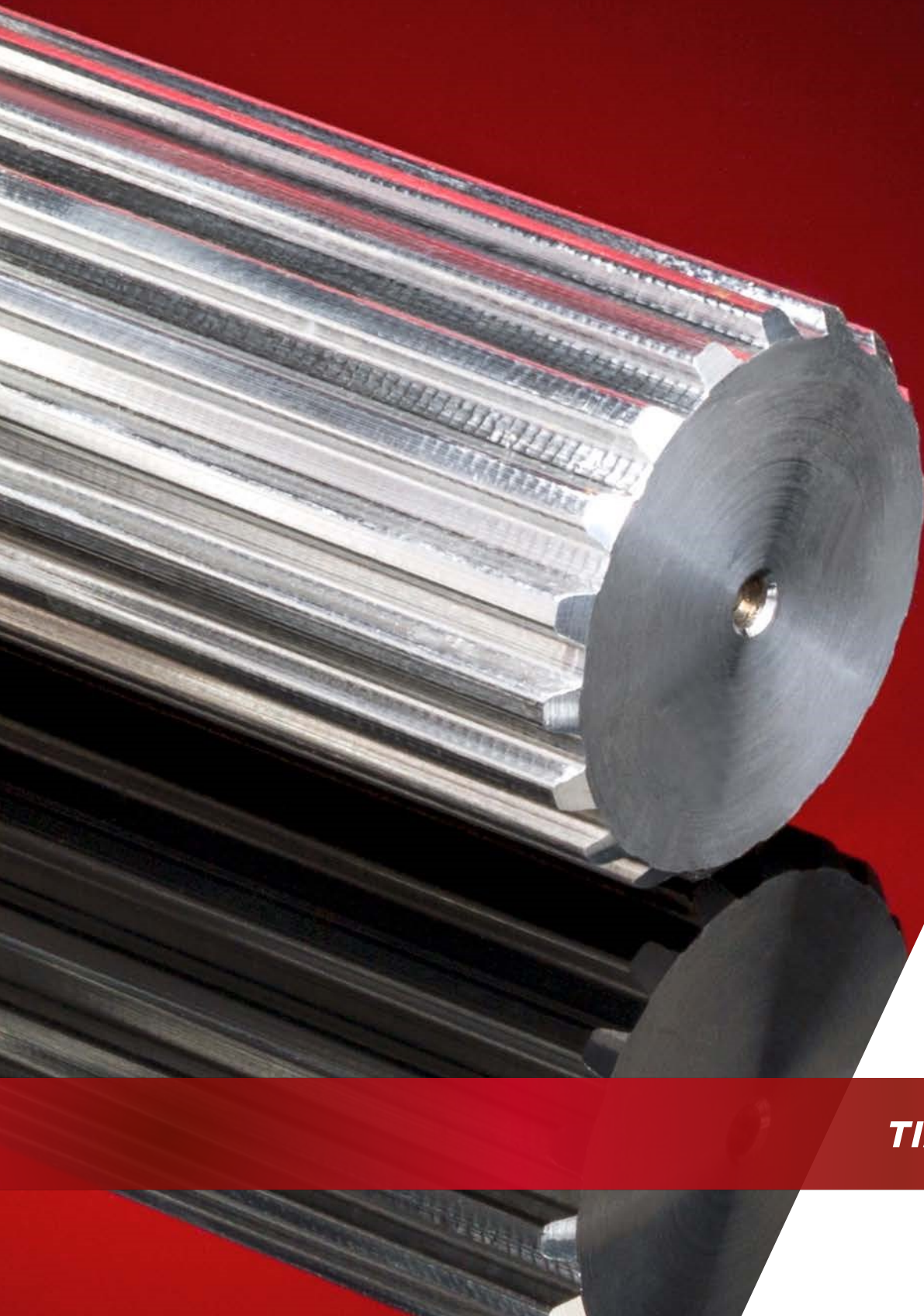


sedis 



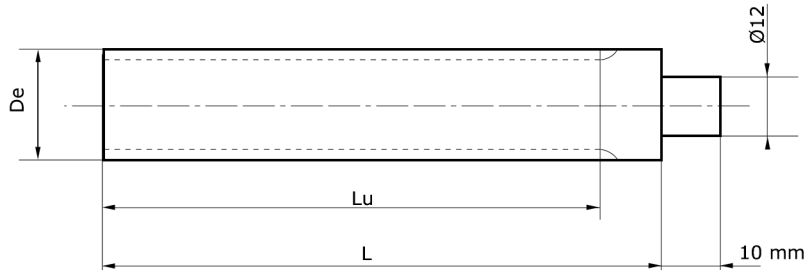


TIMING BARS



METRIC PITCH ALUMINUM TIMING BARS

MATERIAL : Aluminum 6082T6 UNI 9006/4
 Suitable for anodic coating

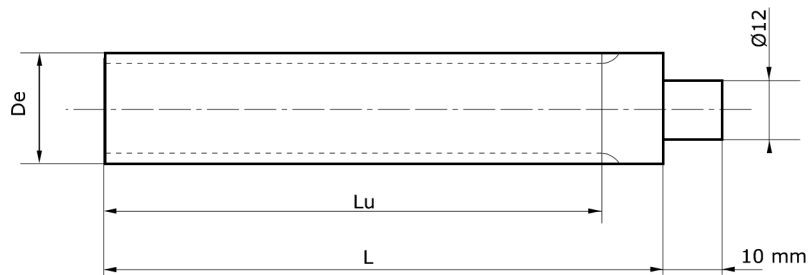
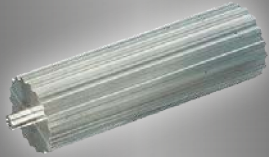


T2,5 - Pitch of 2,5 mm					T5 - Pitch of 5 mm					T10 - Pitch of 10 mm				
Reference	Z	De	Lu	L	Reference	Z	De	Lu	L	Reference	Z	De	Lu	L
10 T2,5	10	7,42	50	75	10 T5	10	15,05	125	140	10 T10	10	29,98	140	140
12 T2,5	12	9,00	50	75	11 T5	11	16,65	125	140	11 T10	11	33,16	140	140
13 T2,5	13	9,80	50	75	12 T5	12	18,25	125	140	12 T10	12	36,35	140	140
14 T2,5	14	10,60	50	75	13 T5	13	19,85	125	140	13 T10	13	39,50	140	140
15 T2,5	15	11,40	50	75	14 T5	14	21,45	132	140	14 T10	14	42,70	160	160
16 T2,5	16	12,20	50	75	15 T5	15	23,05	132	140	15 T10	15	45,90	160	160
17 T2,5	17	13,00	50	75	16 T5	16	24,60	140	140	16 T10	16	49,10	160	160
18 T2,5	18	13,80	50	75	17 T5	17	26,20	140	140	17 T10	17	52,25	160	160
19 T2,5	19	14,60	90	120	18 T5	18	27,80	140	140	18 T10	18	55,45	160	160
20 T2,5	20	15,40	90	120	19 T5	19	29,40	140	140	19 T10	19	58,60	160	160
21 T2,5	21	16,20	90	120	20 T5	20	31,00	160	160	20 T10	20	61,60	160	160
22 T2,5	22	17,00	125	140	21 T5	21	32,70	160	160	21 T10	21	65,00	160	160
24 T2,5	24	18,55	125	140	22 T5	22	34,15	160	160	22 T10	22	68,20	160	160
26 T2,5	26	20,15	125	140	23 T5	23	35,85	160	160	23 T10	23	71,35	160	160
27 T2,5	27	20,95	125	140	24 T5	24	37,40	160	160	24 T10	24	74,55	160	160
28 T2,5	28	21,75	125	140	25 T5	25	38,95	160	160	26 T10	26	80,90	160	160
29 T2,5	29	22,55	125	140	26 T5	26	40,60	160	160	28 T10	28	87,25	160	160
30 T2,5	30	23,35	125	140	27 T5	27	42,20	160	160	30 T10	30	93,65	160	160
32 T2,5	32	24,95	125	140	28 T5	28	43,75	160	160	32 T10	32	100,00	160	160
34 T2,5	34	26,55	125	140	29 T5	29	45,35	160	160	34 T10	34	106,40	160	160
35 T2,5	35	27,35	132	140	30 T5	30	46,95	160	160	36 T10	36	112,75	160	160
36 T2,5	36	28,10	132	140	32 T5	32	50,10	160	160	38 T10	38	119,10	160	160
38 T2,5	38	29,70	132	140	34 T5	34	53,25	160	160	40 T10	40	125,45	160	160
40 T2,5	40	31,30	132	140	35 T5	35	54,85	160	160	45 T10	45	141,40	160	160
42 T2,5	42	32,90	140	140	36 T5	36	56,45	160	160	48 T10	48	150,95	160	160
44 T2,5	44	34,50	140	140	37 T5	37	58,06	160	160	60 T10	60	189,10	160	160
45 T2,5	45	35,30	140	140	38 T5	38	59,65	160	160	72 T10	72	227,29	160	160
48 T2,5	48	37,70	140	140	40 T5	40	62,85	160	160					
50 T2,5	50	39,29	160	160	42 T5	42	66,00	160	160					
60 T2,5	60	47,25	160	160	44 T5	44	69,20	160	160					
65 T2,5	65	51,20	160	160	45 T5	45	70,80	160	160					
70 T2,5	70	55,20	160	160	46 T5	46	72,40	160	160					
72 T2,5	72	56,80	160	160	48 T5	48	75,55	160	160					
90 T2,5	90	71,12	160	160	50 T5	50	78,75	160	160					
100 T2,5	100	79,08	160	160	60 T5	60	94,65	160	160					
					72 T5	72	113,75	160	160					
					80 T5	80	126,48	160	160					
					90 T5	90	142,40	160	160					
					100 T5	100	158,31	160	160					



ALUMINUM TIMING BARS WITH «AT» BELT

MATERIAL : Aluminum
6082T6 UNI 9006/4
Suitable for anodic coating

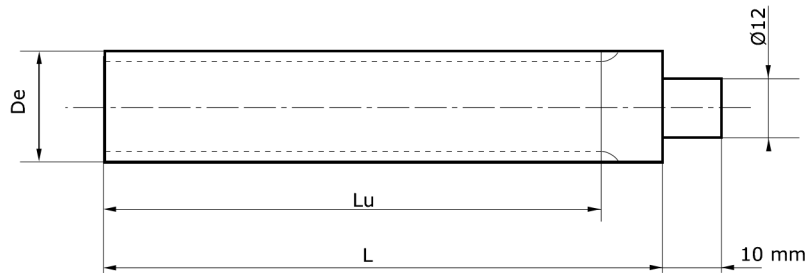


ST5 Pitch of 5 mm					ST10 Pitch of 10 mm				
Reference	Z	De	Lu	L	Reference	Z	De	Lu	L
12 ST5	12	17,85	125	140	15 ST10	15	45,90	160	160
13 ST5	13	19,45	125	140	16 ST10	16	49,05	160	160
14 ST5	14	21,05	132	140	17 ST10	17	52,25	160	160
15 ST5	15	22,65	132	140	18 ST10	18	55,45	160	160
16 ST5	16	24,20	140	140	19 ST10	19	58,60	160	160
17 ST5	17	25,80	140	140	20 ST10	20	61,80	160	160
18 ST5	18	27,40	140	140	21 ST10	21	65,00	160	160
19 ST5	19	29,00	140	140	22 ST10	22	68,15	160	160
20 ST5	20	30,60	160	160	23 ST10	23	71,35	160	160
21 ST5	21	32,30	160	160	24 ST10	24	74,55	160	160
22 ST5	22	33,85	160	160	25 ST10	25	77,70	160	160
23 ST5	23	35,45	160	160	26 ST10	26	80,90	160	160
24 ST5	24	37,00	160	160	27 ST10	27	84,10	160	160
25 ST5	25	38,60	160	160	28 ST10	28	87,25	160	160
26 ST5	26	40,20	160	160	29 ST10	29	90,45	160	160
27 ST5	27	41,80	160	160	30 ST10	30	93,65	160	160
28 ST5	28	43,35	160	160	31 ST10	31	96,80	160	160
29 ST5	29	44,95	160	160	32 ST10	32	100,00	160	160
30 ST5	30	46,55	160	160	33 ST10	33	103,20	160	160
31 ST5	31	48,15	160	160	34 ST10	34	106,40	160	160
32 ST5	32	49,70	160	160	35 ST10	35	109,55	160	160
33 ST5	33	51,30	160	160	36 ST10	36	112,75	160	160
34 ST5	34	52,85	160	160	37 ST10	37	115,90	160	160
35 ST5	35	54,45	160	160	38 ST10	38	119,10	160	160
36 ST5	36	56,05	160	160	40 ST10	40	125,45	160	160
38 ST5	38	59,25	160	160	41 ST10	41	128,65	160	160
40 ST5	40	62,45	160	160	42 ST10	42	131,85	160	160
42 ST5	42	65,60	160	160	44 ST10	44	138,20	160	160
44 ST5	44	68,80	160	160	45 ST10	45	141,40	160	160
45 ST5	45	70,40	160	160	46 ST10	46	114,55	160	160
46 ST5	46	72,00	160	160	48 ST10	48	150,95	160	160
48 ST5	48	75,15	160	160	50 ST10	50	157,30	160	160
50 ST5	50	78,35	160	160	51 ST10	51	160,50	160	160
52 ST5	52	81,55	160	160	52 ST10	52	163,65	160	160
54 ST5	54	84,70	160	160	54 ST10	54	170,05	160	160
55 ST5	55	86,30	160	160	55 ST10	55	173,20	160	160
56 ST5	56	87,90	160	160	56 ST10	56	176,40	160	160
58 ST5	58	91,10	160	160	57 ST10	57	179,60	160	160
60 ST5	60	94,25	160	160	58 ST10	58	182,75	160	160
62 ST5	62	97,45	160	160	52 ST10	52	163,65	160	160
64 ST5	64	100,65	160	160	59 ST10	59	185,75	160	160
65 ST5	65	102,25	160	160	60 ST10	60	189,10	160	160
72 ST5	72	113,25	160	160	62 ST10	62	195,50	160	160
					70 ST10	70	229,95	160	160
					75 ST10	75	236,90	160	160



TIMING BARS FOR PITCHES IN INCHES

MATERIALS :

 Aluminum 3571 TA16 UNI
 Steel C40 UNI 7845


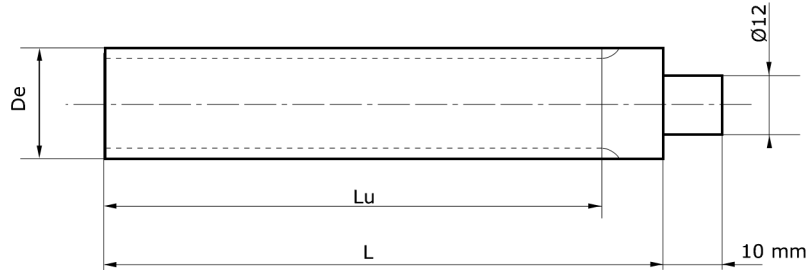
MXL Pitch 0,80" in Aluminum					XL Pitch 1/5"					L Pitch 3/8"				
Reference	Z	De	Lu	L	Reference	Z	De	Lu	L	Reference	Z	De	Lu	L
10 MXL AL	10	5,97	50	75	10 XL..	10	15,66	125	140	10 L..	10	29,56	140	140
11 MXL AL	11	6,60	50	75	11 XL..	11	17,28	125	140	11 L..	11	32,59	140	140
12 MXL AL	12	7,26	50	75	12 XL..	12	18,90	125	140	12 L..	12	35,62	160	160
13 MXL AL	13	7,90	50	75	13 XL..	13	20,51	125	140	13 L..	13	38,65	160	160
14 MXL AL	14	8,56	50	75	14 XL..	14	22,13	132	140	14 L..	14	41,68	160	160
15 MXL AL	15	9,19	50	75	15 XL..	15	23,75	132	140	15 L..	15	44,72	160	160
16 MXL AL	16	9,83	50	75	16 XL..	16	25,36	140	140	16 L..	16	47,75	160	160
17 MXL AL	17	10,49	50	75	17 XL..	17	26,98	140	140	17 L..	17	50,78	160	160
18 MXL AL	18	11,12	50	75	18 XL..	18	28,60	140	140	18 L..	18	53,81	160	160
19 MXL AL	19	11,78	90	120	19 XL..	19	30,22	140	140	19 L..	19	56,84	160	160
20 MXL AL	20	12,42	90	120	20 XL..	20	31,83	140	140	20 L..	20	59,88	160	160
21 MXL AL	21	13,08	90	120	21 XL..	21	33,45	160	160	21 L..	21	62,91	160	160
22 MXL AL	22	13,72	125	140	22 XL..	22	35,07	160	160	22 L..	22	65,94	160	160
23 MXL AL	23	14,38	125	140	23 XL..	23	36,60	160	160	23 L..	23	68,97	160	160
24 MXL AL	24	15,01	125	140	24 XL..	24	38,30	160	160	24 L..	24	72,00	160	160
25 MXL AL	25	15,67	125	140	25 XL..	25	39,93	160	160	27 L..	27	81,10	160	160
26 MXL AL	26	16,31	125	140	26 XL..	26	41,53	160	160	30 L..	30	90,20	160	160
27 MXL AL	27	16,94	125	140	27 XL..	27	43,15	160	160	.. AL for Aluminum or AC for Steel				
28 MXL AL	28	16,70	125	140	28 XL..	28	44,77	160	160					
29 MXL AL	29	18,24	125	140	29 XL..	29	46,39	160	160					
30 MXL AL	30	18,90	125	140	30 XL..	30	48,00	160	160					
32 MXL AL	32	20,19	125	140	32 XL..	32	51,24	160	160					
34 MXL AL	34	21,49	125	140	33 XL..	33	52,76	160	160					
35 MXL AL	35	22,12	132	140	34 XL..	34	54,47	160	160					
36 MXL AL	36	22,78	132	140	35 XL..	35	56,09	160	160					
38 MXL AL	38	24,08	132	140	36 XL..	36	57,70	160	160					
40 MXL AL	40	25,37	132	140	38 XL..	38	60,94	160	160					
42 MXL AL	42	26,67	140	140	39 XL..	39	62,56	160	160					
44 MXL AL	44	27,94	140	140	40 XL..	40	64,17	160	160					
45 MXL AL	45	28,60	140	140	41 XL..	41	65,79	160	160					
48 MXL AL	48	30,53	140	140	42 XL..	42	67,41	160	160					
50 MXL AL	50	32,33	140	140	43 XL..	43	69,02	160	160					
60 MXL AL	60	38,30	160	160	44 XL..	44	70,64	160	160					
64 MXL AL	64	40,89	160	160	48 XL..	48	77,11	160	160					
65 MXL AL	65	41,53	160	160	56 XL..	56	90,04	160	160					
70 MXL AL	70	44,78	160	160	60 XL..	60	96,51	160	160					
72 MXL AL	72	46,05	160	160	72 XL..	72	115,92	160	160					
75 MXL AL	75	48,01	160	160										
90 MXL AL	90	57,71	160	160										
110 MXL AL	110	70,64	160	160										



ALUMINUM TIMING BARS - «HTD» TYPE

MATERIAL :

Aluminum UNI 3571 TA16



3M Pitch of 3 mm						5M Pitch of 5 mm					
Reference	Z	De	Dp	Lu	L	Reference	Z	De	Dp	Lu	L
9 HTD 3M	9	8,59	7,83	75	100	12 HTD 5M	12	19,10	17,96	150	165
10 HTD 3M	10	9,55	8,79	75	100	13 HTD 5M	13	20,69	19,55	150	165
11 HTD 3M	11	10,50	9,74	75	100	14 HTD 5M	14	22,28	21,14	175	183
12 HTD 3M	12	11,46	10,70	100	125	15 HTD 5M	15	23,87	22,73	175	183
13 HTD 3M	13	12,41	11,65	100	125	16 HTD 5M	16	25,46	24,32	175	183
14 HTD 3M	14	13,37	12,61	100	125	17 HTD 5M	17	27,06	25,92	175	183
15 HTD 3M	15	14,32	13,56	100	125	18 HTD 5M	18	28,65	27,51	200	200
16 HTD 3M	16	15,28	14,52	125	155	19 HTD 5M	19	30,24	29,10	200	200
17 HTD 3M	17	16,23	15,47	125	155	20 HTD 5M	20	31,83	30,69	200	200
18 HTD 3M	18	17,19	16,43	125	155	21 HTD 5M	21	33,42	32,28	200	200
19 HTD 3M	19	18,14	17,38	125	155	22 HTD 5M	22	35,01	33,87	200	200
20 HTD 3M	20	19,10	18,34	150	165	23 HTD 5M	23	36,61	35,47	200	200
21 HTD 3M	21	20,05	19,25	150	165	24 HTD 5M	24	38,20	37,06	200	200
22 HTD 3M	22	21,01	20,25	150	165	25 HTD 5M	25	39,79	38,65	200	200
23 HTD 3M	23	21,96	21,20	150	165	26 HTD 5M	26	41,38	40,24	200	200
24 HTD 3M	24	22,92	22,16	150	165	27 HTD 5M	27	42,97	41,83	200	200
25 HTD 3M	25	23,87	23,11	150	165	28 HTD 5M	28	44,56	43,42	200	200
26 HTD 3M	26	24,83	24,07	150	165	29 HTD 5M	29	46,15	45,01	200	200
27 HTD 3M	27	25,78	25,02	150	165	30 HTD 5M	30	47,75	46,60	200	200
28 HTD 3M	28	26,74	25,98	150	165	31 HTD 5M	31	49,34	48,20	200	200
29 HTD 3M	29	27,69	26,93	150	165	32 HTD 5M	32	50,93	49,79	200	200
30 HTD 3M	30	28,65	27,89	175	183	33 HTD 5M	33	52,52	51,38	200	200
31 HTD 3M	31	29,60	28,84	175	183	34 HTD 5M	34	54,11	52,97	200	200
32 HTD 3M	32	30,56	29,80	175	183	35 HTD 5M	35	55,70	54,56	200	200
33 HTD 3M	33	31,54	30,75	175	183	36 HTD 5M	36	57,30	56,16	200	200
34 HTD 3M	34	32,47	31,71	175	183	38 HTD 5M	38	60,48	59,34	200	200
35 HTD 3M	35	33,42	32,66	175	183	40 HTD 5M	40	63,66	62,52	200	200
36 HTD 3M	36	34,38	33,62	200	200	42 HTD 5M	42	66,85	65,71	200	200
37 HTD 3M	37	35,33	34,57	200	200	44 HTD 5M	44	70,03	68,89	200	200
38 HTD 3M	38	36,29	35,53	200	200	45 HTD 5M	45	71,62	70,48	200	200
39 HTD 3M	39	37,24	36,48	200	200	46 HTD 5M	46	73,21	72,07	200	200
40 HTD 3M	40	38,20	37,44	200	200	48 HTD 5M	48	76,39	75,25	200	200
42 HTD 3M	42	40,11	39,34	200	200	50 HTD 5M	50	79,58	78,43	200	200
44 HTD 3M	44	42,02	41,26	200	200	54 HTD 5M	54	85,94	84,80	200	200
45 HTD 3M	45	42,97	42,21	200	200	60 HTD 5M	60	95,49	94,35	200	200
48 HTD 3M	48	45,84	45,08	200	200	62 HTD 5M	62	98,68	97,54	200	200
50 HTD 3M	50	47,75	46,99	200	200	72 HTD 5M	72	114,59	113,45	200	200
52 HTD 3M	52	49,66	48,90	200	200						
54 HTD 3M	54	51,57	50,81	200	200						
56 HTD 3M	56	53,48	52,72	200	200						
60 HTD 3M	60	57,30	56,54	200	200						
62 HTD 3M	62	59,21	58,45	200	200						
64 HTD 3M	64	61,12	60,36	200	200						
66 HTD 3M	66	63,03	62,27	200	200						
68 HTD 3M	68	64,94	64,18	200	200						
70 HTD 3M	70	66,85	66,09	200	200						
72 HTD 3M	72	68,75	67,99	200	200						

MATERIAL :

Steel



8M Pitch of 8 mm				
Reference	Z	De	Lu	L
18 HTD 8M	18	44,47	200	200
19 HTD 8M	19	47,01	200	200
20 HTD 8M	20	49,56	200	200
21 HTD 8M	21	52,11	200	200
22 HTD 8M	22	54,65	200	200
23 HTD 8M	23	57,20	200	200
24 HTD 8M	24	59,75	200	200
25 HTD 8M	25	62,29	200	200
26 HTD 8M	26	64,84	200	200
28 HTD 8M	28	69,93	200	200
30 HTD 8M	30	75,02	200	200
32 HTD 8M	32	80,12	200	200
34 HTD 8M	34	85,21	200	200
35 HTD 8M	35	87,76	200	200
36 HTD 8M	36	90,30	200	200
38 HTD 8M	38	95,40	200	200
40 HTD 8M	40	100,49	200	200
44 HTD 8M	44	110,68	200	200
48 HTD 8M	48	120,86	200	200

